

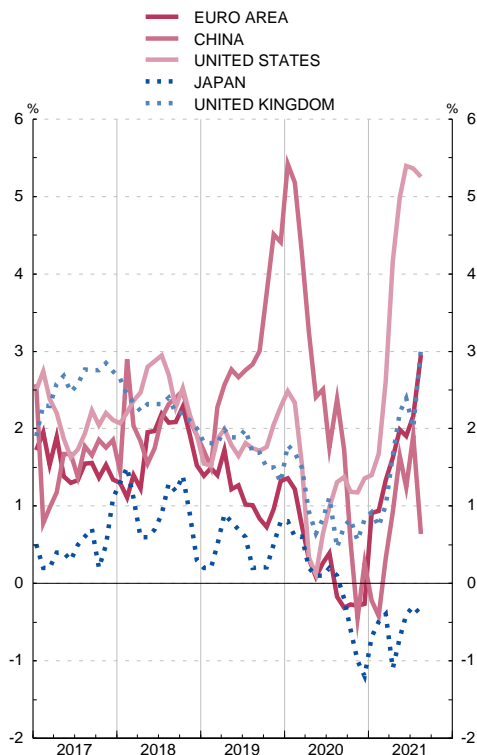
26. INTERNATIONAL ECONOMY
C) Prices

26.21 Consumer price index

OECD 2015 = 100

		European Union										Canada	China	South Korea	United States	Japan	United Kingdom	Switzerland
OECD		Total EU	Euro area	Spain	Germany	France	Netherlands	Italy	Poland	Sweden								
		1	2	3	4	5	6	7	8	9	10	11	12	13	14	15	16	17
15	A	100.0	...	100.0	100.0	100.0	100.0	100.0	100.0	100.0	100.0	100.0	100.0	100.0	100.0	100.0	100.0	100.0
16	A	101.2	100.2	100.2	99.8	100.5	100.2	100.3	99.9	99.3	101.0	101.4	102.0	101.0	101.3	99.9	101.0	99.6
17	A	103.5	101.7	101.8	101.7	102.0	101.2	101.7	101.1	101.4	102.8	103.0	103.6	102.9	103.4	100.4	103.6	100.1
18	A	106.2	103.6	103.6	103.5	103.8	103.1	103.4	102.3	103.2	104.8	105.4	105.8	104.5	105.9	101.3	106.0	101.0
19	A	108.4	105.0	104.8	104.2	105.3	104.2	106.2	102.9	105.5	106.7	107.4	108.8	104.9	107.9	101.8	107.8	101.4
20	A	109.9	105.8	105.1	103.8	105.8	104.7	107.5	102.7	109.1	107.2	108.2	111.5	105.4	109.2	101.8	108.9	100.7
20	Apr	109.2	105.9	105.4	103.8	106.1	104.6	107.3	103.0	109.0	106.2	107.2	111.3	105.0	108.2	102.0	108.6	100.7
	May	109.2	105.9	105.3	103.8	106.0	104.7	107.2	102.8	108.8	106.9	107.5	110.4	104.7	108.2	101.9	108.6	100.7
	Jun	109.7	106.3	105.7	104.3	106.6	104.8	107.5	102.9	109.4	107.5	108.4	110.4	104.9	108.8	101.7	108.8	100.7
	Jul	110.0	106.1	105.3	103.3	106.1	105.2	108.7	102.7	109.2	107.7	108.4	110.0	104.9	109.3	101.8	109.2	100.6
	Aug	110.2	105.7	104.9	103.4	106.0	105.1	108.1	103.0	109.1	107.6	108.2	111.5	105.5	109.7	101.9	108.8	100.6
	Sep	110.2	105.7	105.0	103.5	105.8	104.6	107.9	102.3	109.3	107.6	108.2	111.7	106.2	109.8	101.7	109.2	100.6
	Oct	110.4	105.9	105.2	104.1	105.9	104.5	108.5	102.5	109.4	107.5	108.6	111.4	105.6	109.9	101.6	109.2	100.6
	Nov	110.4	105.6	104.8	104.2	105.0	104.7	107.6	102.4	109.5	107.5	108.8	110.7	105.5	109.8	101.3	109.1	100.3
	Dec	110.6	106.0	105.2	104.5	105.5	105.0	107.9	102.6	109.6	108.3	108.6	111.5	105.7	109.9	101.1	109.4	100.2
21	Jan	111.1	106.3	105.3	104.5	106.3	105.1	107.6	103.3	110.9	107.9	109.2	112.6	106.5	110.4	101.6	109.3	100.3
	Feb	111.5	106.6	105.5	103.9	107.0	105.1	108.6	103.4	111.5	108.2	109.7	113.2	107.0	111.0	101.6	109.4	100.5
	Mar	112.2	107.5	106.5	104.9	107.5	105.8	108.9	103.7	112.7	108.4	110.3	112.7	107.2	111.8	101.7	109.7	100.8
	Apr	112.8	108.1	107.1	106.1	108.2	105.9	109.4	104.1	113.6	108.6	110.9	112.3	107.4	112.7	100.9	110.4	101.0
	May	113.4	108.4	107.4	106.6	108.7	106.2	109.5	104.1	113.9	108.8	111.4	112.2	107.5	113.6	101.2	111.0	101.3
	Jun	114.1	108.7	107.7	107.1	109.1	106.3	109.7	104.2	114.0	108.9	111.7	111.8	107.4	114.6	101.3	111.4	101.4
	Jul	114.6	108.7	107.6	106.3	110.1	106.4	110.2	104.7	114.4	109.2	112.4	112.1	107.6	115.2	101.5	111.4	101.3
	Aug	114.9	109.0	108.0	106.8	110.1	107.1	110.7	105.1	114.8	109.8	112.7	112.2	108.3	115.4	101.5	112.1	101.5
	Sep	110.8	108.8

CONSUMER PRICE INDEX
Annual percentage changes



CONSUMER PRICE INDEX
Annual percentage changes

