

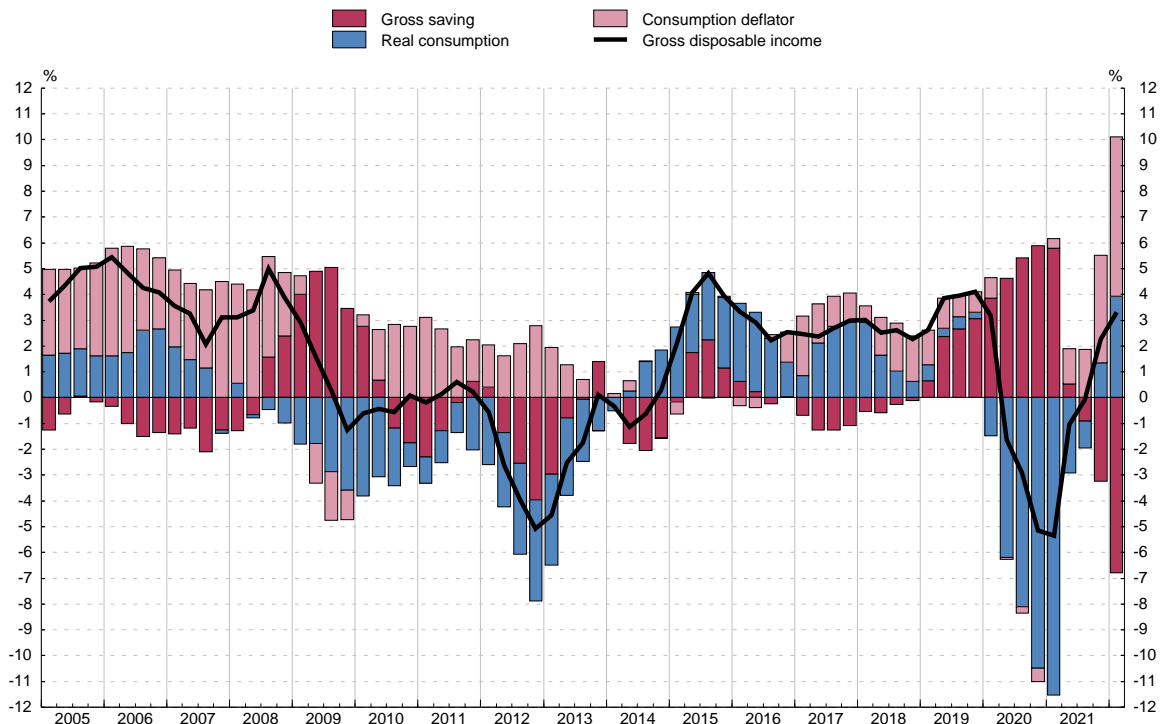
16. HOUSEHOLDS AND NPISHs

16.3 Gross disposable income. Uses

EUR millions (col. 1 to 5) and euros (col. 6 to 10)

	Gross disposable income (GDI) 1=2+3	Uses				Gross disposable income per capita (4-q cum.) (a)				
		Consumption 2	Gross saving			Total 6=7+8	Uses			
			Total 3	Consumption of fixed capital (b) 4	Net saving 5=3-4		Consumption 7	Gross saving		
								Total 8	Consumption fixed cap.(b) 9	Net saving 10=8-9
17	722 935	681 168	41 767	30 437	11 330	15 516	14 620	896	653	243
18	743 555	702 305	41 250	31 344	9 906	15 869	14 989	880	669	211
19	780 898	716 391	64 507	33 148	31 359	16 521	15 156	1 365	701	663
20	742 538	631 844	110 694	34 590	76 104	15 672	13 336	2 336	730	1 606
21	758 724	672 177	86 547	36 117	50 430	16 029	14 201	1 828	763	1 065
18 //	204 006	172 610	31 396	7 806	23 590	15 681	14 830	851	662	190
///	170 862	172 951	-2 089	7 870	-9 959	15 772	14 927	845	666	179
IV	201 913	178 795	23 118	7 927	15 191	15 869	14 989	880	669	211
19 /	175 241	181 819	-6 578	8 184	-14 762	16 015	15 039	976	677	299
//	218 229	175 113	43 116	8 250	34 866	16 287	15 063	1 224	685	539
///	177 684	177 667	17	8 326	-8 309	16 396	15 130	1 266	693	572
IV	209 744	181 792	27 952	8 388	19 564	16 521	15 156	1 365	701	663
20 /	176 424	172 097	4 327	8 518	-4 191	16 523	14 930	1 593	707	886
//	194 606	133 293	61 313	8 604	52 709	16 020	14 043	1 977	715	1 263
///	173 040	164 617	8 423	8 695	-272	15 917	13 763	2 154	722	1 432
IV	198 468	161 837	36 631	8 773	27 858	15 672	13 336	2 336	730	1 606
21 /	174 588	160 072	14 516	8 903	5 613	15 638	13 086	2 552	738	1 814
//	204 331	166 223	38 108	8 987	29 121	15 857	13 793	2 064	747	1 317
///	174 593	168 901	5 692	9 076	-3 384	15 904	13 896	2 008	756	1 252
IV	205 212	176 981	28 231	9 151	19 080	16 029	14 201	1 828	763	1 065
22 /	181 147	182 574	-1 427	9 310	-10 737	16 156	14 666	1 491	771	719

USES OF THE GROSS DISPOSABLE INCOME (per capita)
Annual percentage change and its contributions (4-quarter cumulated)



SOURCE: NA (INE).

a. The reference population is shown in Table 16.2 col. 1.

b. Loss of value of fixed assets (specially dwellings) due to use and obsolescence.