

### 3. FINANCIAL ACCOUNTS AND SUPPLEMENTARY INDICATORS

### 3.2.2 Gross financing indicators of Spain's general government

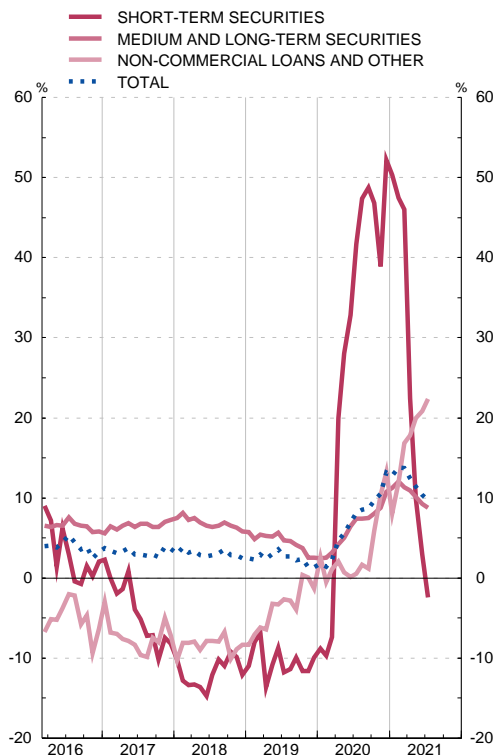
#### C) Liquidity and financing indicators

■ Series depicted in chart.

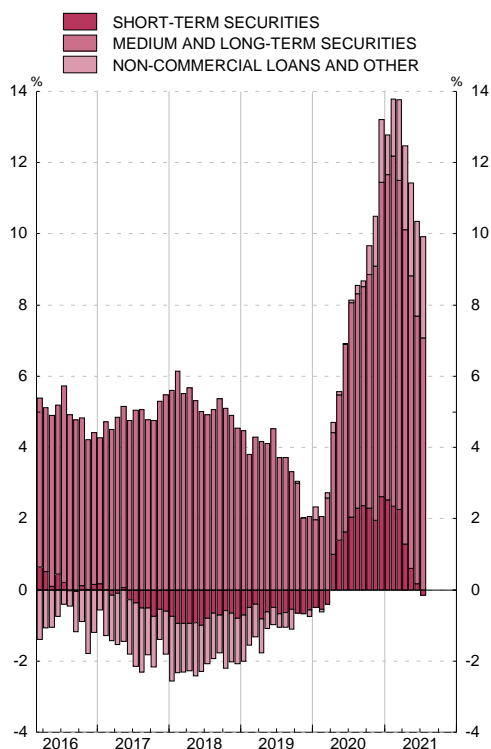
EUR millions and %

	Gross financing			Short-term securities				Medium and long term securities				Non Commercial Loans and Others			
	EDP Debt (a)	Monthly change	12 month % change	Total	Monthly change	12 month % change	Contribution to 12-month % change	Total	Monthly change	12 month % change	Contribution to 12-month % change	Total	Monthly change	12 month % change	Contribution to 12-month % change
	1=4+8+12	2=5+9+13	3	4	5	6	7	8	9	10	11	12	13	14	15
<b>16</b>	1 104 554	34 475	3.2	82 242	1 648	2.0	0.2	834 430	45 580	5.8	4.3	187 882	-12 753	-6.4	-1.2
<b>17</b>	1 145 097	40 543	3.7	75 536	-6 707	-8.2	-0.6	895 011	60 581	7.3	5.5	174 550	-13 331	-7.1	-1.2
<b>18</b>	1 173 350	28 253	2.5	66 422	-9 113	-12.1	-0.8	946 963	51 952	5.8	4.5	159 965	-14 585	-8.4	-1.3
<b>19</b>	P 1 188 839	15 489	1.3	59 819	-6 603	-9.9	-0.6	971 166	24 203	2.6	2.1	157 853	-2 112	-1.3	-0.2
<b>20 Feb</b>	P 1 201 732	5 890	1.4	59 607	-446	-9.7	-0.5	981 631	11 557	2.5	2.1	160 494	-5 221	-0.5	-0.1
<b>Mar</b>	P 1 224 538	22 806	2.3	59 910	303	-7.4	-0.4	1 000 561	18 930	3.2	2.6	164 067	3 573	1.1	0.1
<b>Apr</b>	P 1 235 471	10 933	4.7	70 783	10 873	19.9	1.0	1 000 074	-488	4.2	3.4	164 615	548	2.1	0.3
<b>May</b>	P 1 258 595	23 124	5.6	76 114	5 331	28.1	1.4	1 017 641	17 567	5.0	4.1	164 840	226	0.7	0.1
<b>Jun</b>	P 1 291 031	32 435	6.9	79 703	3 589	32.8	1.6	1 045 687	28 046	6.5	5.3	165 640	800	0.1	0.0
<b>Jul</b>	P 1 290 845	-186	8.1	83 134	3 431	41.7	2.0	1 043 305	-2 383	7.4	6.0	164 406	-1 234	0.5	0.1
<b>Aug</b>	P 1 298 381	7 537	8.5	85 357	2 223	47.4	2.3	1 048 666	5 361	7.4	6.0	164 358	-48	1.6	0.2
<b>Sep</b>	P 1 308 204	9 822	8.7	87 132	1 775	48.8	2.4	1 057 786	9 120	7.5	6.1	163 285	-1 073	1.2	0.2
<b>Oct</b>	P 1 306 046	-2 157	9.7	85 377	-1 755	46.8	2.3	1 048 710	-9 076	8.1	6.6	171 959	8 674	5.9	0.8
<b>Nov</b>	P 1 312 609	6 562	10.5	83 046	-2 331	38.9	2.0	1 052 497	3 787	8.8	7.1	177 066	5 106	10.4	1.4
<b>Dec</b>	P 1 345 784	33 176	13.2	91 005	7 958	52.1	2.6	1 076 071	23 574	10.8	8.8	178 709	1 643	13.2	1.8
<b>21 Jan</b>	P 1 348 728	2 943	12.8	90 302	-703	50.4	2.5	1 079 327	3 255	11.3	9.1	179 099	391	8.1	1.1
<b>Feb</b>	P 1 367 312	18 584	13.8	87 900	-2 401	47.5	2.4	1 099 677	20 350	12.0	9.8	179 735	635	12.0	1.6
<b>Mar</b>	P 1 393 075	25 763	13.8	87 468	-433	46.0	2.3	1 113 908	14 231	11.3	9.3	191 699	11 965	16.8	2.3
<b>Apr</b>	P 1 389 666	-3 409	12.5	86 650	-818	22.4	1.3	1 109 103	-4 805	10.9	8.8	193 913	2 214	17.8	2.4
<b>May</b>	P 1 402 505	12 839	11.4	83 633	-3 017	9.9	0.6	1 121 112	12 009	10.2	8.2	197 760	3 847	20.0	2.6
<b>Jun</b>	P 1 424 692	22 187	10.4	82 029	-1 603	2.9	0.2	1 142 547	21 435	9.3	7.5	200 116	2 355	20.8	2.7
<b>Jul</b>	A 1 416 946	-7 746	9.8	81 096	-934	-2.5	-0.2	1 134 746	-7 801	8.8	7.1	201 104	989	22.3	2.8

GROSS FINANCING OF GENERAL GOVERNMENT  
Annual percentage changes



GROSS FINANCING OF GENERAL GOVERNMENT  
Contributions to the annual percentage change



FUENTE: BE.

a. Debt according to Excessive Deficit Procedure (EDP). Consolidated nominal gross debt.