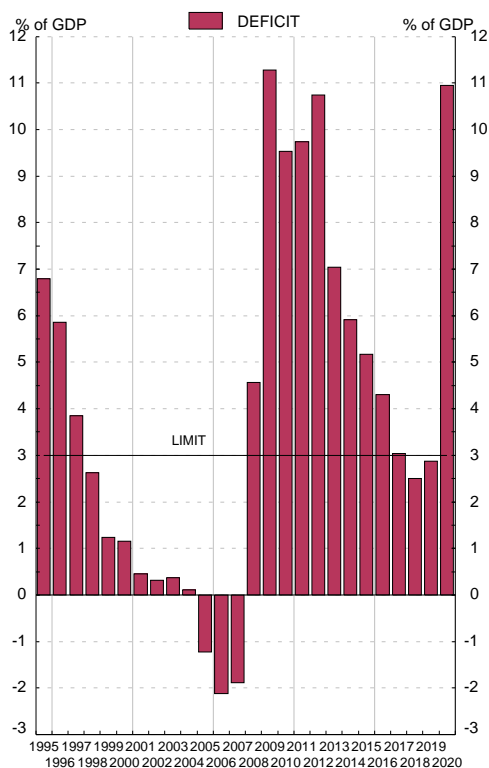


2. MAIN ECONOMIC INDICATORS

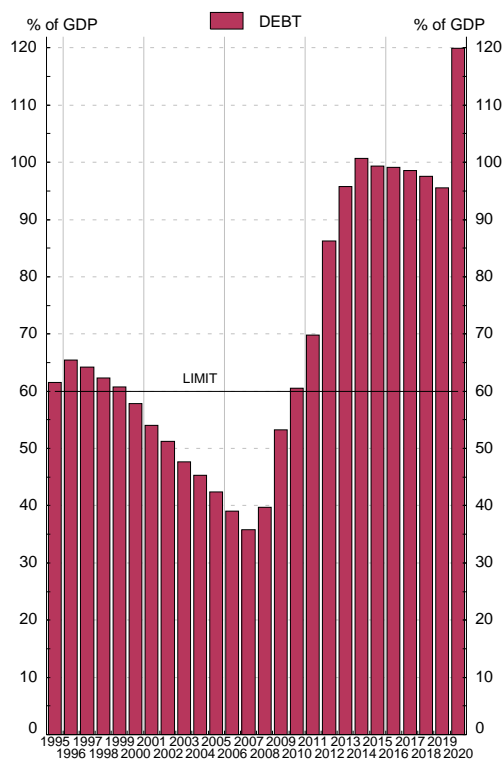
2.9 General Government deficit and debt (a)

	Notifications sent to the European Commission						Eur millions and percentage	
	Deficit	Debt	GDPmp	Deficit % of GDPmp	Debt % of GDPmp	Difference with respect to reference values		
	1	2	3	4	5	6=4-3 points	7=5-60 points	
95	31 267	283 457	460 588	6.8	61.5	3.8	1.5	
96	28 681	319 976	489 203	5.9	65.4	2.9	5.4	
97	20 028	333 627	519 268	3.9	64.2	0.9	4.2	
98	14 594	346 417	555 993	2.6	62.3	-0.4	2.3	
99	7 382	362 223	595 723	1.2	60.8	-1.8	0.8	
00	7 520	374 557	647 851	1.2	57.8	-1.8	-2.2	
01	3 189	378 883	700 993	0.5	54.0	-2.5	-6.0	
02	2 374	384 145	749 552	0.3	51.2	-2.7	-8.8	
03	3 009	382 775	802 266	0.4	47.7	-2.6	-12.3	
04	941	389 888	859 437	0.1	45.4	-2.9	-14.6	
05	-11 421	393 479	927 357	-1.2	42.4	-4.2	-17.6	
06	-21 322	392 132	1 003 823	-2.1	39.1	-5.1	-20.9	
07	-20 287	384 662	1 075 539	-1.9	35.8	-4.9	-24.2	
08	50 731	440 621	1 109 541	4.6	39.7	1.6	-20.3	
09	120 576	569 535	1 069 323	11.3	53.3	8.3	-6.7	
10	102 193	649 153	1 072 709	9.5	60.5	6.5	0.5	
11	103 606	743 043	1 063 763	9.7	69.9	6.7	9.9	
12	110 696	889 909	1 031 099	10.7	86.3	7.7	26.3	
13	71 791	977 312	1 020 348	7.0	95.8	4.0	35.8	
14	61 056	1 039 388	1 032 158	5.9	100.7	2.9	40.7	
15	55 786	1 070 079	1 077 590	5.2	99.3	2.2	39.3	
16	47 953	1 104 554	1 113 840	4.3	99.2	1.3	39.2	
17	35 273	1 145 097	1 161 867	3.0	98.6	0.0	38.6	
18	30 044	1 173 350	1 203 259	2.5	97.5	-0.5	37.5	
19	35 763	1 188 839	1 244 375	2.9	95.5	-0.1	35.5	
20	P 122 900	1 345 784	1 121 948	11.0	120.0	8.0	60.0	

EDP DEFICIT



EDP DEBT



Source: Deficit: Ministerio de Hacienda y Administraciones Públicas; Debt: Banco de España; GDPmp: Instituto Nacional de Estadística

a. The data in this table are those sent to the European Commission by the Spanish Government twice a year (before April 1st and before October 1st) under the Excessive Deficit Procedure / Stability and Growth Pact (Regulation 479/2009, amended by Regulation 679/2010 and Resolution 97/C236/1, Regulation 1466/97 amended by Regulation 1055/2005, and Regulation 1467/97 amended by Regulation 1056/2005). The data correspond to the Questionnaire sent in late September 2021 (See tables 11.3 and 11.12 to 11.13).