

11. GENERAL GOVERNMENT

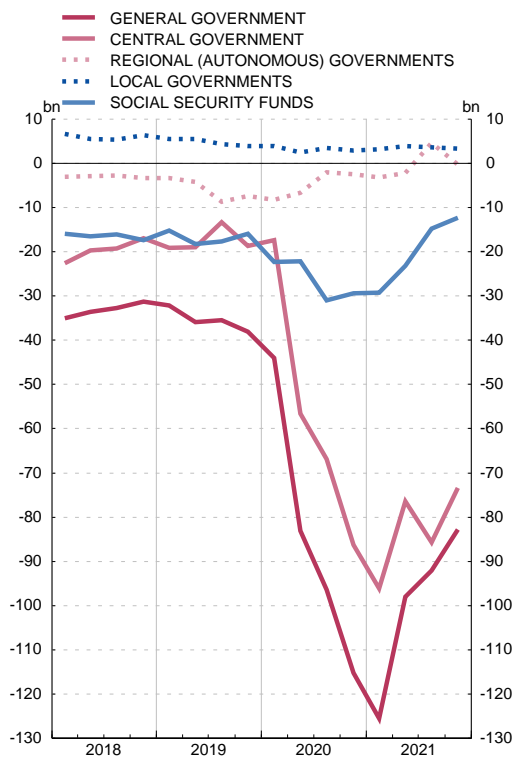
11.A Net lending (+)/net borrowing (-)

■ Series depicted in chart.

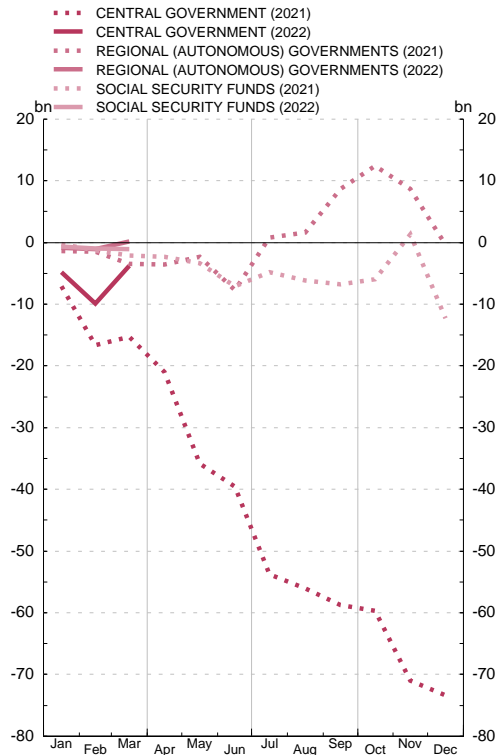
EUR millions

		General government	Central government		Regional (autonomous) governments	Local governments	Social security funds	
		1 = 2+4+5+6	Total	Of which:	(b)			
			2	State	(a)			
			3	4	5	6		
20	P	-115 200	-86 351	-84 799	-2 427	2 922	-29 344	
21	P	-82 819	-73 431	-73 972	-334	3 271	-12 325	
21	Q1	P	-20 834	-15 288	-14 665	-3 416	-10	-2 120
	Q2	P	-34 619	-24 230	-25 366	-4 298	-1 145	-4 946
	Q3	P	873	-19 225	-18 280	16 382	3 462	254
	Q4	P	-28 239	-14 688	-15 661	-9 002	964	-5 513
21	J-M	P	...	-15 288	-14 665	-3 416	...	-2 120
22	J-M	A	...	-3 746	-5 143	220	...	-1 107
21	May	P	...	-14 839	-14 380	1 274	...	-1 021
	Jun	P	...	-3 695	-5 402	-5 412	...	-3 738
	Jul	P	...	-14 226	-13 002	8 510	...	2 239
	Aug	P	...	-2 285	-2 169	777	...	-1 296
	Sep	P	...	-2 714	-3 109	7 095	...	-689
	Oct	P	...	-995	-896	3 702	...	848
	Nov	P	...	-11 250	-10 892	-3 646	...	7 305
	Dec	P	...	-2 443	-3 873	-9 058	...	-13 666
22	Jan	A	...	-4 791	-4 223	-848	...	-682
	Feb	A	...	-5 075	-6 781	-259	...	-291
	Mar	A	...	6 120	5 861	1 327	...	-134

NET LENDING (+)/NET BORROWING (-)
By level of government. 4-quarter moving average



NET LENDING (+)/NET BORROWING (-)
By level of government. Cumulative data from January. Monthly information



SOURCE: Ministerio de Hacienda (IGAE).

a. Detailed operations are published in Table 12.A of the Statistical Bulletin.

b. The breakdown by regional (autonomous) government is published in Table 13.A of the Statistical Bulletin.