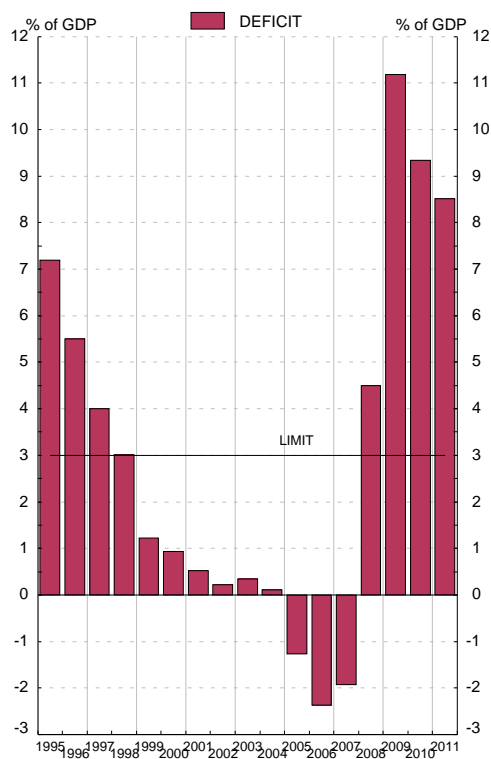


2. MAIN ECONOMIC INDICATORS

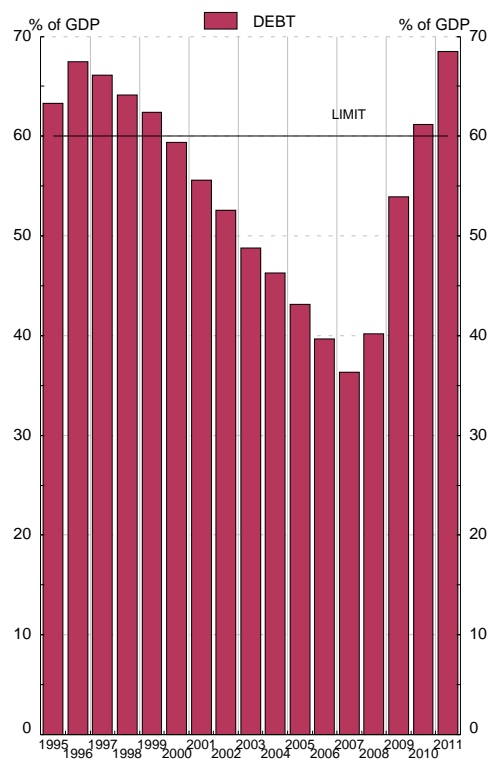
2.9 General Government deficit and debt (a)

	Notifications sent to the European Commission						Eur millions and percentage	
	Deficit	Debt	GDPmp	Deficit % of GDPmp	Debt % of GDPmp	Difference with respect to reference values		
	1	2	3	4	5	6=4-3 points	7=5-60 points	
95	32 171	283 076	447 205	7.2	63.3	4.2	3.3	
96	26 071	319 600	473 855	5.5	67.4	2.5	7.4	
97	20 176	333 199	503 921	4.0	66.1	1.0	6.1	
98	16 281	345 968	539 493	3.0	64.1	0.0	4.1	
99	7 100	361 775	579 942	1.2	62.4	-1.8	2.4	
00	5 899	374 033	629 907	0.9	59.4	-2.1	-0.6	
01	3 578	378 247	680 397	0.5	55.6	-2.5	-4.4	
02	1 558	383 435	729 258	0.2	52.6	-2.8	-7.4	
03	2 728	382 032	783 082	0.3	48.8	-2.7	-11.2	
04	941	389 142	841 294	0.1	46.3	-2.9	-13.7	
05	-11 511	392 497	909 298	-1.3	43.2	-4.3	-16.8	
06	-23 349	391 055	985 547	-2.4	39.7	-5.4	-20.3	
07	-20 255	382 307	1 053 161	-1.9	36.3	-4.9	-23.7	
08	48 897	436 984	1 087 749	4.5	40.2	1.5	-19.8	
09	117 143	565 082	1 047 831	11.2	53.9	8.2	-6.1	
10	P 98 166	643 136	1 051 342	9.3	61.2	6.3	1.2	
11	A 91 344	734 961	1 073 383	8.5	68.5	5.5	8.5	

DEFICIT



DEBT



Source: Deficit: Ministerio de Economía y Hacienda; Debt: Banco de España; GDPmp: Instituto Nacional de Estadística

a. The data in this table are those sent to the European Commission by the Spanish Government twice a year (before April 1st and before October 1st) under the Excessive Deficit Procedure / Stability and Growth Pact (Regulation 479/2009, amended by Regulation 679/2010 and Resolution 97/C236/1, Regulation 1466/97 amended by Regulation 1055/2005, and Regulation 1467/97 amended by Regulation 1056/2005). The data correspond to the Questionnaire sent in late March 2012 and have been computed according to the ESA 95 methodology (See tables 11.1 and 11.8 to 11.9)