

11. GENERAL GOVERNMENT

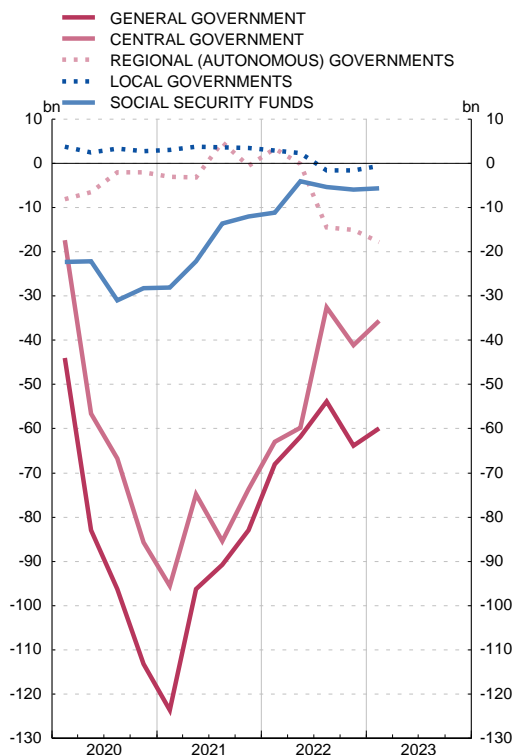
11.a Net lending (+) / net borrowing (-)

■ Series depicted in chart.

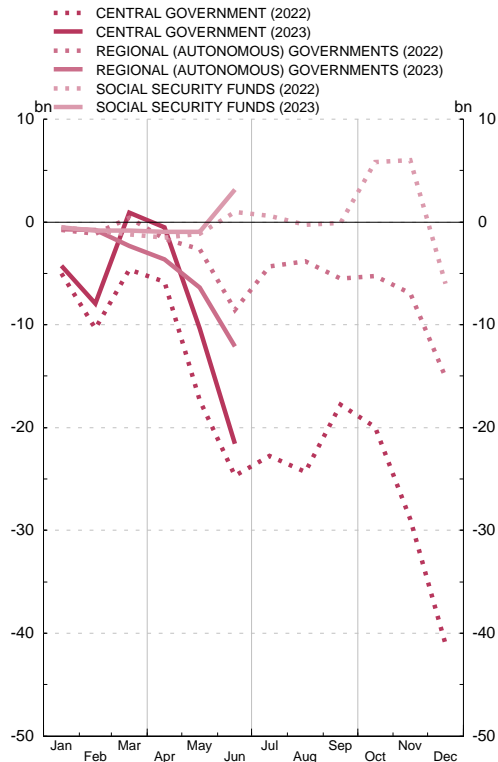
EUR millions

		General government	Central government	Of which:	Regional (autonomous) governments	Local governments	Social security funds
		1 = 2+4+5+6	2	3	(a)	4	(b)
			Total	State			
21	P	-82 946	-73 734	-74 359	-630	3 457	-12 039
22	P	-63 776	-41 058	-43 982	-15 085	-1 647	-5 986
22	Q2	P	-28 455	-20 039	-19 895	-8 978	2 190
	Q3	P	8 461	6 895	6 916	3 073	-1 068
	Q4	P	-37 717	-23 283	-25 103	-9 587	-5 889
23	Q1	A	-2 203	876	-715	-2 351	496
22	J-J	P	...	-24 670	-25 795	-8 571	971
23	J-J	A	...	-21 588	-24 200	-12 110	3 127
22	Aug	P	...	-1 579	-1 598	523	-848
	Sep	P	...	6 560	6 746	-1 668	181
	Oct	P	...	-2 206	-2 716	222	5 890
	Nov	P	...	-8 925	-8 859	-1 640	239
	Dec	P	...	-12 152	-13 528	-8 169	-12 018
23	Jan	A	...	-4 287	-3 766	-713	-530
	Feb	A	...	-3 637	-5 432	-61	-297
	Mar	A	...	8 800	8 483	-1 577	-32
	Apr	A	...	-1 386	-1 327	-1 298	-119
	May	A	...	-9 842	-10 565	-2 708	1
	Jun	A	...	-11 236	-11 593	-5 753	4 104

NET LENDING (+)/NET BORROWING (-)
By level of government. 4-quarter moving average



NET LENDING (+)/NET BORROWING (-)
By level of government. Cumulative data from January. Monthly information



SOURCE: Ministerio de Hacienda (IGAE).

a. Detailed operations are published in Table 12.a of the Statistical Bulletin.

b. The breakdown by regional (autonomous) government is published in Table 13.a of the Statistical Bulletin.