

3. FINANCIAL ACCOUNTS AND SUPPLEMENTARY INDICATORS
C) Liquidity and financing indicators

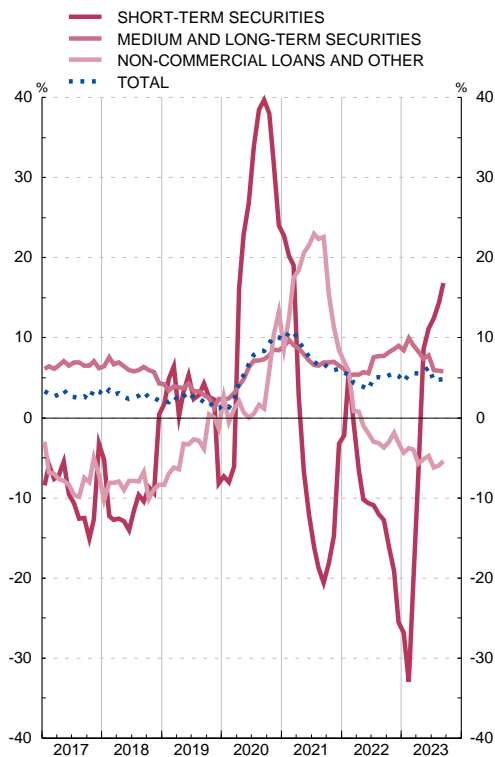
3.22 Gross financing indicators of Spain's general government

■ Series depicted in chart.

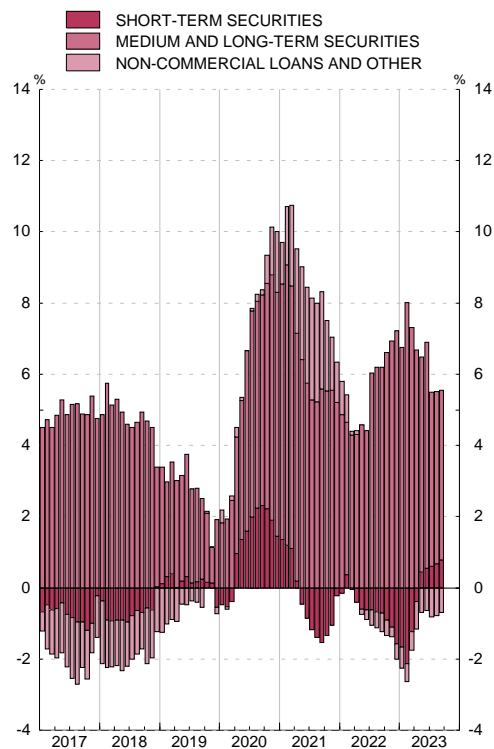
EUR millions and %

	Gross financing			Short-term securities				Medium and long term securities				Non Commercial Loans and Others			
	EDP Debt (a)	Monthly change	12 month % change	Total	Monthly change	12 month % change	Contribution to 12-month % change	Total	Monthly change	12 month % change	Contribution to 12-month % change	Total	Monthly change	12 month % change	Contribution to 12-month % change
	1=4+8+12	2=5+9+13	3	4	5	6	7	8	9	10	11	12	13	14	15
18	1 208 861	25 449	2.2	79 933	333	0.4	0.0	968 963	39 708	4.3	3.4	159 965	-14 592	-8.4	-1.2
19	1 223 355	14 495	1.2	73 361	-6 572	-8.2	-0.5	992 140	23 178	2.4	1.9	157 854	-2 112	-1.3	-0.2
20	1 345 786	122 430	10.0	91 005	17 644	24.1	1.4	1 076 071	83 931	8.5	6.9	178 710	20 856	13.2	1.7
21	1 428 133	82 347	6.1	88 088	-2 917	-3.2	-0.2	1 146 233	70 162	6.5	5.2	193 812	15 102	8.5	1.1
22 Apr	P 1 446 282	-8 431	4.0	80 923	-5 876	-6.6	-0.4	1 168 896	-4 747	5.4	4.3	196 462	2 192	0.8	0.1
May	P 1 457 350	11 069	3.8	75 157	-5 767	-10.2	-0.6	1 185 381	16 485	5.7	4.6	196 812	350	-1.0	-0.1
Jun	P 1 476 192	18 841	3.5	73 261	-1 896	-10.7	-0.6	1 205 585	20 204	5.5	4.4	197 345	533	-1.9	-0.3
Jul	P 1 487 826	11 635	5.0	72 257	-1 004	-10.9	-0.6	1 219 358	13 772	7.5	6.0	196 212	-1 134	-3.0	-0.4
Aug	P 1 492 569	4 743	5.1	70 700	-1 558	-12.0	-0.7	1 227 077	7 719	7.7	6.2	194 793	-1 419	-3.1	-0.4
Sep	P 1 504 713	12 144	5.0	69 755	-945	-12.7	-0.7	1 242 213	15 136	7.7	6.2	192 745	-2 048	-3.7	-0.5
Oct	P 1 498 007	-6 706	5.3	67 901	-1 854	-16.1	-0.9	1 237 497	-4 715	8.2	6.6	192 609	-136	-3.0	-0.4
Nov	P 1 506 724	8 718	5.6	66 580	-1 321	-19.1	-1.1	1 246 805	9 308	8.6	6.9	193 339	731	-1.9	-0.3
Dec	P 1 502 804	-3 920	5.2	65 599	-981	-25.5	-1.6	1 249 468	2 662	9.0	7.2	187 737	-5 602	-3.1	-0.4
23 Jan	P 1 490 107	-12 697	4.5	64 631	-968	-26.8	-1.7	1 241 135	-8 333	8.4	6.7	184 341	-3 396	-4.4	-0.6
Feb	P 1 520 251	30 143	5.4	62 258	-2 373	-33.0	-2.1	1 273 913	32 778	10.0	8.0	184 080	-261	-3.8	-0.5
Mar	P 1 535 385	15 134	5.5	68 916	6 659	-20.6	-1.2	1 279 894	5 981	9.1	7.3	186 575	2 495	-4.0	-0.5
Apr	A 1 526 147	-9 238	5.5	75 411	6 495	-6.8	-0.4	1 265 534	-14 359	8.3	6.7	185 201	-1 374	-5.7	-0.8
May	A 1 541 752	15 605	5.8	81 609	6 198	8.6	0.4	1 273 426	7 892	7.4	6.0	186 717	1 516	-5.1	-0.7
Jun	A 1 568 743	26 991	6.3	81 416	-193	11.1	0.6	1 299 335	25 909	7.8	6.4	187 991	1 274	-4.7	-0.6
Jul	A 1 557 406	-11 337	4.7	81 237	-179	12.4	0.6	1 292 171	-7 164	6.0	4.9	183 998	-3 994	-6.2	-0.8
Aug	A 1 563 284	5 878	4.7	80 870	-368	14.4	0.7	1 299 271	7 099	5.9	4.8	183 144	-854	-6.0	-0.8
Sep	A 1 577 732	14 448	4.9	81 472	602	16.8	0.8	1 313 907	14 636	5.8	4.8	182 354	-790	-5.4	-0.7

GROSS FINANCING OF GENERAL GOVERNMENT
Annual percentage changes



GROSS FINANCING OF GENERAL GOVERNMENT
Contributions to the annual percentage change



FUENTE: BE.

a. Debt according to Excessive Deficit Procedure (EDP). Consolidated nominal gross debt.