

### 3. FINANCIAL ACCOUNTS (ESA 2010)

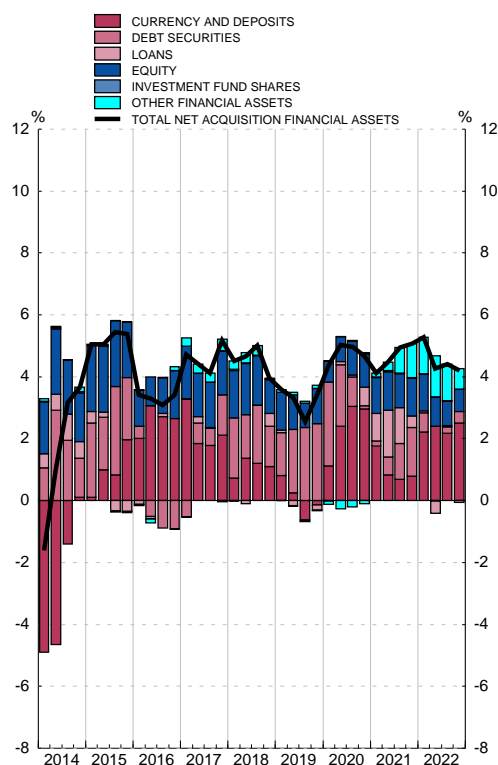
### 3.12 Rest of the world Financial transactions account

■ Series depicted in chart.

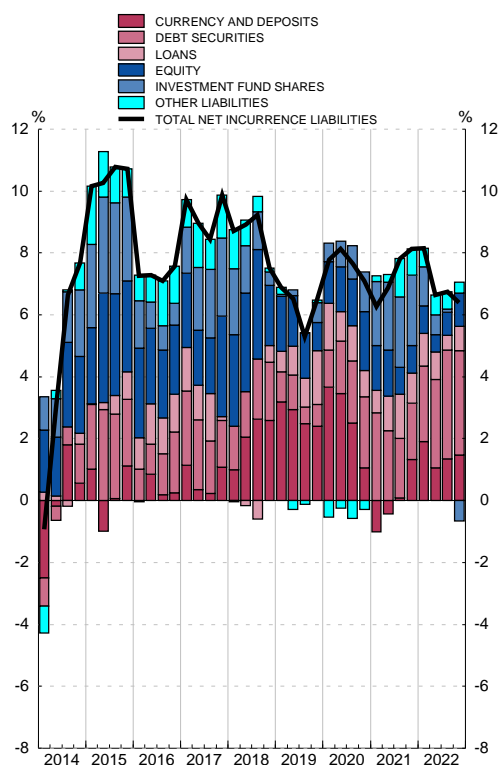
EUR millions

	Net financial transactions	Net acquisition of financial assets						Net incurrence of liabilities					
		Total	Main instruments					Total	Main instruments				
			Currency and deposits	Debt securities	Loans	Equity	Investment fund shares		Currency and deposits	Debt securities	Loans	Equity	Investment fund shares
1	2	3	4	5	6	7	8	9	10	11	12	13	
<b>18</b>	-28 417	115 108	31 818	38 087	11 947	31 684	62	143 525	49 516	35 675	10 296	37 211	8 399
<b>19</b>	-30 452	101 234	-4 523	74 036	-4 815	33 587	-140	131 686	48 858	14 534	35 078	18 738	13 050
<b>20</b>	-11 923	147 839	93 544	3 460	18 611	34 274	924	159 762	23 976	51 229	19 215	42 685	29 200
<b>21</b>	-22 435	165 500	25 981	51 180	12 250	39 290	1 107	187 935	30 575	41 987	22 931	20 444	52 482
<b>22</b>	-19 744	143 918	85 636	12 671	-2 223	24 570	237	163 662	37 772	86 241	19 959	27 376	-16 812
<b>19 Q1</b>	-33	38 086	1 828	17 999	-1 131	18 022	-108	38 119	23 586	-2 018	5 627	8 636	920
<b>Q2</b>	-11 670	25 892	-996	25 241	-6 657	6 605	-16	37 562	12 137	11 546	8 313	8 469	3 871
<b>Q3</b>	-9 105	6 253	-26 234	24 654	5 075	1 665	-16	15 358	1 606	174	222	12 924	-490
<b>Q4</b>	-9 644	31 003	20 878	6 143	-2 102	7 295	-1	40 647	11 529	4 832	20 916	-11 291	8 748
<b>20 Q1</b>	-213	71 552	40 987	26 559	3 366	5 342	133	71 765	52 595	8 897	2 798	18 336	500
<b>Q2</b>	-1 556	48 011	39 269	4 512	-2 996	10 609	154	49 567	9 430	23 088	-2 783	11 411	9 056
<b>Q3</b>	-1 951	6 721	-5 021	-7 165	3 709	11 740	266	8 672	-17 566	7 763	4 446	15 101	5 698
<b>Q4</b>	-8 203	21 555	18 309	-20 446	14 532	6 583	371	29 758	-20 483	11 481	14 755	-2 164	13 945
<b>21 Q1</b>	-539	53 172	2 505	28 830	12 528	7 080	340	53 711	5 899	21 847	201	8 287	17 870
<b>Q2</b>	-4 041	62 492	10 686	17 645	17 869	14 659	164	66 533	22 131	11 161	6 428	13 019	13 099
<b>Q3</b>	-7 483	21 422	-9 315	10 571	-7 627	6 620	319	28 905	-5 824	-88	11 283	455	7 114
<b>Q4</b>	-10 372	28 414	22 105	-5 866	-10 521	10 931	284	38 786	8 369	9 066	5 019	-1 317	14 400
<b>22 Q1</b>	2 822	61 823	49 846	-1 914	2 207	6 647	-34	59 001	20 325	37 639	2 428	9 067	-5 036
<b>Q2</b>	-4 474	31 486	18 037	-3 118	2 497	6 558	198	35 960	3 131	23 099	3 180	5 557	-650
<b>Q3</b>	-5 940	27 453	-16 339	18 004	7 439	2 224	87	33 393	1 778	17 095	1 260	5 387	-6 341
<b>Q4</b>	-12 152	23 156	34 093	-301	-14 366	9 140	-14	35 308	12 537	8 408	13 091	7 365	-4 785

NET ACQUISITION OF FINANCIAL ASSETS  
Annual percentage change and its components (a)



PASIVOS NETOS CONTRAÍDOS  
Annual percentage change and its components (b)



Source: FASE (BE).

a. The annual percentage changes are calculated as: Total of Net acquisition of financial assets / Stock of financial assets at the beginning of the period.

b. The annual percentage changes are calculated as: Total of Net incurrence of liabilities / Stock of liabilities at the beginning of the period.