

3. FINANCIAL ACCOUNTS (ESA 2010)

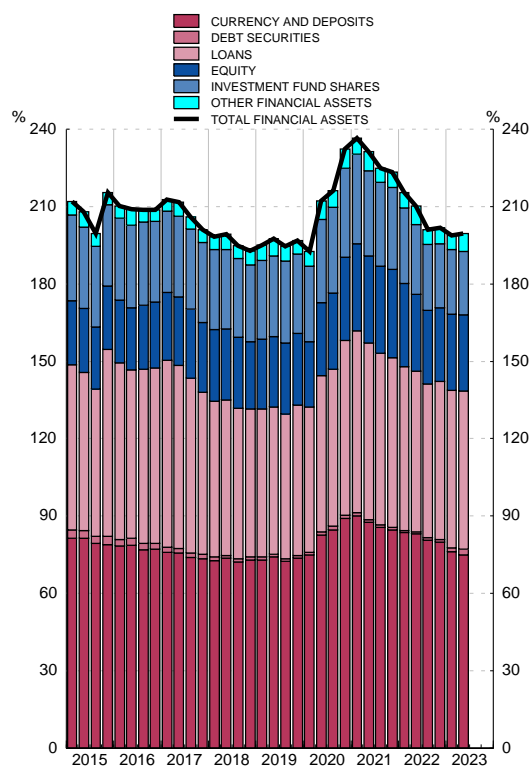
3.9 Households and NPISH Financial balance sheet

■ Series depicted in chart.

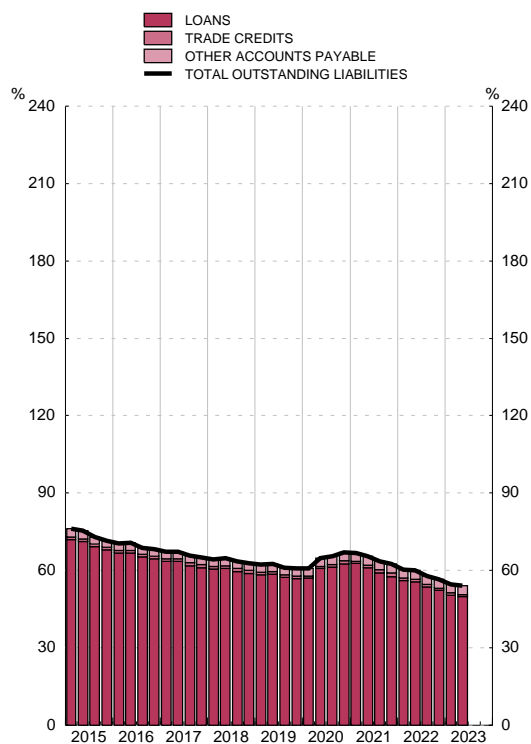
EUR billions

	1	Financial assets						Outstanding liabilities				
		2	Main instruments					8	Main instruments			
			3	4	5	6	7		9	10	11	
		Total	Currency and deposits	Debt securities	Equity	Investment fund shares	Insurance and pensions	Total	Loans	Trade credits	Other accounts payable	
19		1 694	2 452	917	13	725	346	384	758	708	12	38
20		1 848	2 599	996	14	760	359	388	750	700	12	38
21		1 966	2 731	1 035	13	803	419	388	765	704	18	42
22		1 954	2 716	1 074	13	825	386	335	762	704	11	47
23	A	2 053	2 814	1 058	30	863	418	348	761	703	11	48
19	Q3	1 651	2 406	897	11	693	339	394	756	708	12	35
	Q4	1 694	2 452	917	13	725	346	384	758	708	12	38
20	Q1	1 626	2 376	925	12	694	313	364	751	704	11	36
	Q2	1 724	2 481	966	14	707	333	377	757	710	11	37
	Q3	1 723	2 472	969	15	696	338	380	749	701	13	35
	Q4	1 848	2 599	996	14	760	359	388	750	700	12	38
21	Q1	1 886	2 630	1 002	14	783	377	385	744	698	9	36
	Q2	1 934	2 697	1 020	14	796	395	386	762	712	11	39
	Q3	1 918	2 672	1 017	13	792	401	385	755	703	15	37
	Q4	1 966	2 731	1 035	13	803	419	388	765	704	18	42
22	Q1	1 944	2 703	1 050	10	796	405	370	758	704	13	42
	Q2	1 935	2 709	1 071	10	803	383	348	773	717	12	44
	Q3	1 889	2 651	1 066	10	788	376	336	762	708	12	42
	Q4	1 954	2 716	1 074	13	825	386	335	762	704	11	47
23	Q1	1 991	2 744	1 051	23	843	407	345	753	696	13	44
	Q2	2 053	2 814	1 058	30	863	418	348	761	703	11	48

FINANCIAL ASSETS
As a percentage of GDP



PASIVOS
As a percentage of GDP



Source: FASE (BE).