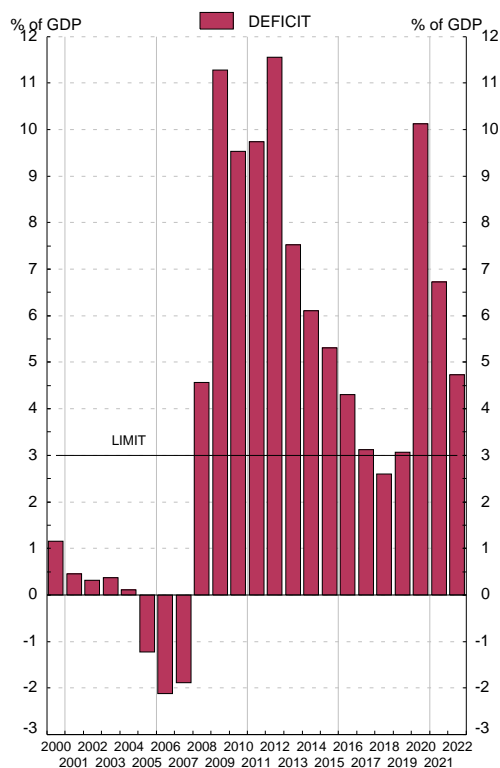


2. MAIN ECONOMIC INDICATORS

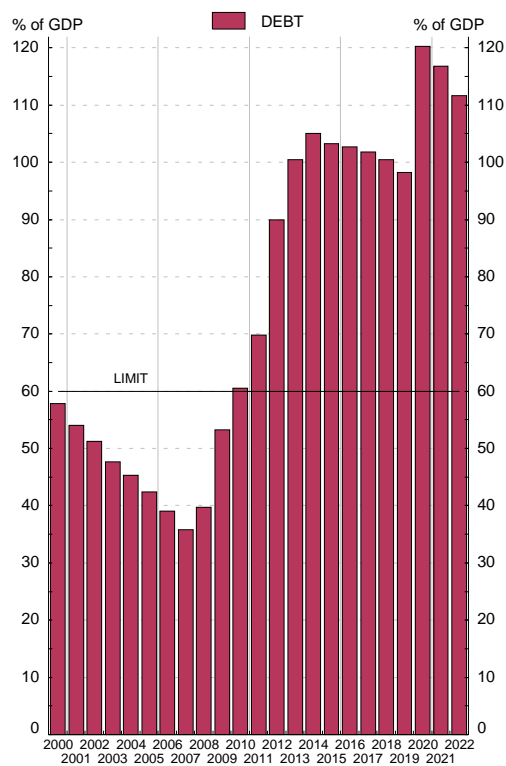
2.9 General Government deficit and debt (a)

	Notifications sent to the European Commission						Eur millions and percentage	
	Deficit	Debt	GDPmp	Deficit % of GDPmp	Debt % of GDPmp	Difference with respect to reference values		
						6=4-3 points	7=5-60 points	
1	2	3	4	5	6=4-3 points	7=5-60 points		
00	7 520	374 557	647 851	1.2	57.8	-1.8	-2.2	
01	3 189	378 883	700 993	0.5	54.0	-2.5	-6.0	
02	2 374	384 145	749 552	0.3	51.2	-2.7	-8.8	
03	3 009	382 775	802 266	0.4	47.7	-2.6	-12.3	
04	941	389 888	859 437	0.1	45.4	-2.9	-14.6	
05	-11 421	393 479	927 357	-1.2	42.4	-4.2	-17.6	
06	-21 322	392 132	1 003 823	-2.1	39.1	-5.1	-20.9	
07	-20 287	384 662	1 075 539	-1.9	35.8	-4.9	-24.2	
08	50 731	440 621	1 109 541	4.6	39.7	1.6	-20.3	
09	120 576	569 535	1 069 323	11.3	53.3	8.3	-6.7	
10	102 193	649 153	1 072 709	9.5	60.5	6.5	0.5	
11	103 606	743 043	1 063 763	9.7	69.9	6.7	9.9	
12	119 100	927 813	1 031 104	11.6	90.0	8.6	30.0	
13	76 838	1 025 655	1 020 677	7.5	100.5	4.5	40.5	
14	63 097	1 084 846	1 032 608	6.1	105.1	3.1	45.1	
15	57 235	1 113 661	1 078 092	5.3	103.3	2.3	43.3	
16	47 893	1 145 050	1 114 420	4.3	102.7	1.3	42.7	
17	36 228	1 183 412	1 162 492	3.1	101.8	0.1	41.8	
18	31 224	1 208 861	1 203 859	2.6	100.4	-0.4	40.4	
19	38 116	1 223 355	1 245 513	3.1	98.2	0.1	38.2	
20	113 199	1 345 786	1 119 010	10.1	120.3	7.1	60.3	
21	82 262	1 428 133	1 222 290	6.7	116.8	3.7	56.8	
22	P 63 736	1 502 804	1 346 377	4.7	111.6	1.7	51.6	

EDP DEFICIT



EDP DEBT



Source: Deficit: Ministerio de Hacienda y Administraciones Públicas; Debt: Banco de España; GDPmp: Instituto Nacional de Estadística

a. The data in this table are those sent to the European Commission by the Spanish Government twice a year (before April 1st and before October 1st) under the Excessive Deficit Procedure / Stability and Growth Pact (Regulation 479/2009, amended by Regulation 679/2010 and Resolution 97/C236/1, Regulation 1466/97 amended by Regulation 1055/2005 and Regulation 1467/97 amended by Regulation 1056/2005). The data correspond to the Questionnaire sent in late September 2023 (See tables 11.3 and 11.12 to 11.13).