

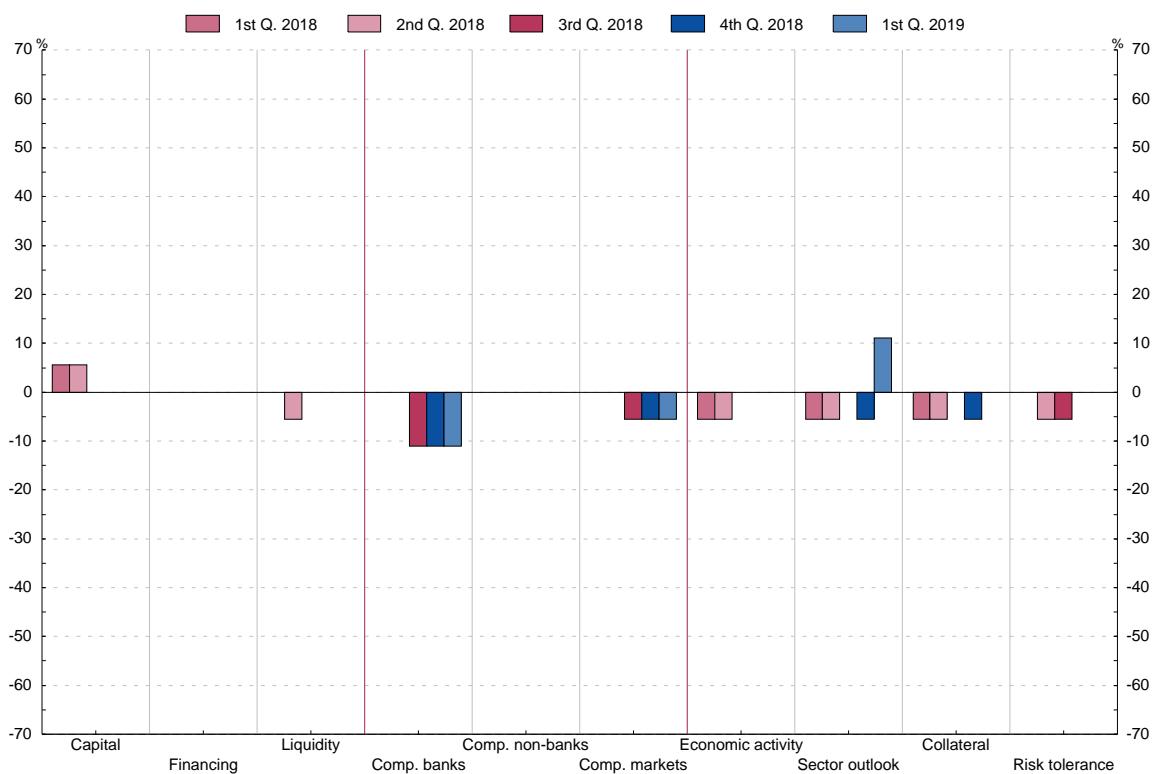
2. BANK LENDING SURVEY.
Diffusion Index

2.4 Contribution of different factors to changes in credit standards for approving loans or credit lines to large enterprises (question 2)

■ Series depicted in chart.

Diffusion Index(1)

	Cost of funds and balance sheet constraints			Pressure from competition			Perception of risk			Institution's risk tolerance	
	Costs related to your bank's capital position	Your bank's ability to access market financing	Your bank's liquidity position	Competition from other banks	Competition from non-banks	Competition from market financing	Expectations regarding general economic activity	Industry or firm-specific outlook	Risk on the collateral demanded		
	1	2	3	4	5	6	7	8	9	10 (2)	
15 Q2	0.0	0.0	0.0	0.0	0.0	0.0	0.0	-5.6	-5.6	0.0	0.0
Q3	0.0	0.0	0.0	0.0	0.0	0.0	0.0	0.0	-5.6	0.0	0.0
Q4	0.0	0.0	0.0	0.0	0.0	0.0	0.0	0.0	0.0	0.0	0.0
16 Q1	5.6	0.0	-5.6	-5.6	0.0	-5.6	-5.6	-5.6	-5.6	5.6	-5.6
Q2	5.6	0.0	-5.6	-5.6	0.0	-5.6	-5.6	-5.6	-5.6	5.6	-5.6
Q3	5.6	0.0	-5.6	-5.6	0.0	-5.6	-5.6	-5.6	-5.6	5.6	-5.6
Q4	0.0	-5.6	-11.1	-11.1	-5.6	-11.1	-11.1	-11.1	-11.1	0.0	-11.1
17 Q1	5.6	0.0	-5.6	-11.1	0.0	-5.6	-5.6	-5.6	-5.6	5.6	0.0
Q2	5.6	0.0	0.0	-5.6	0.0	-5.6	-5.6	-5.6	-5.6	-5.6	-5.6
Q3	5.6	0.0	0.0	-5.6	0.0	0.0	-5.6	-5.6	-5.6	-5.6	5.6
Q4	5.6	0.0	0.0	-5.6	0.0	0.0	-5.6	-5.6	-5.6	-5.6	0.0
18 Q1	5.6	0.0	0.0	0.0	0.0	0.0	-5.6	-5.6	-5.6	-5.6	0.0
Q2	5.6	0.0	-5.6	0.0	0.0	0.0	-5.6	-5.6	-5.6	-5.6	-5.6
Q3	0.0	0.0	0.0	-11.1	0.0	-5.6	0.0	0.0	0.0	0.0	-5.6
Q4	0.0	0.0	0.0	-11.1	0.0	-5.6	0.0	-5.6	-5.6	-5.6	0.0
19 Q1	0.0	0.0	0.0	-11.1	0.0	-5.6	0.0	11.1	0.0	0.0	0.0



(1) Share of banks reporting that the factor has contributed considerably to the tightening x 1 + share of banks reporting that it has contributed somewhat to the tightening x 1/2 - share of banks reporting that it has contributed somewhat to the easing x 1/2 - share of banks reporting that it has contributed considerably to the easing x 1.

(2) Available from the first quarter 2015 due to the introduction of a new questionnaire.