

1. BANK LENDING SURVEY.
Net percentage

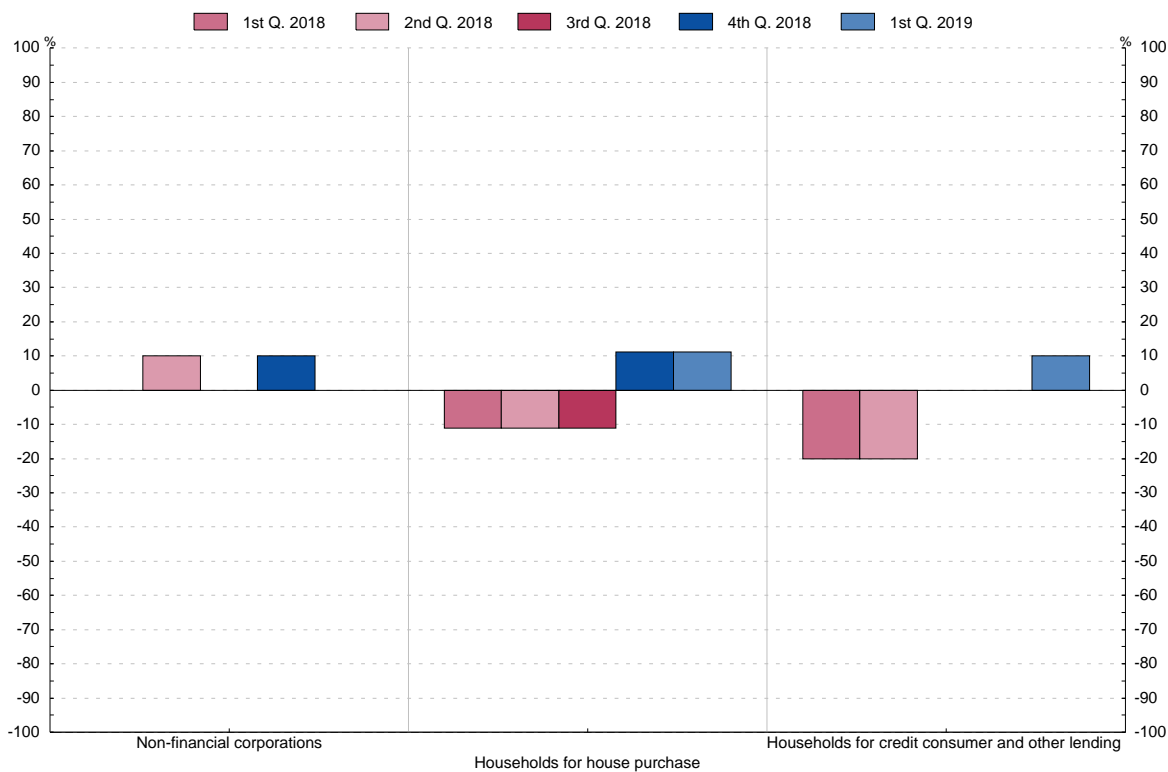
1.18 Changes in the proportion of loan applications rejected outright (questions 5 and 17)

■ Series depicted in chart.

Net percentage(1)

	To non-financial corporations		To households	
	Loans or credit lines		For house purchase	Credit consumer and other lending
	1	(2)	2	(2)
15 Q2			10.0	0.0
Q3			0.0	-11.1
Q4			-20.0	0.0
16 Q1			-20.0	-11.1
Q2			-20.0	-11.1
Q3			-10.0	0.0
Q4			-10.0	-11.1
17 Q1			-10.0	0.0
Q2			-20.0	-11.1
Q3			10.0	-22.2
Q4			-10.0	-11.1
18 Q1			0.0	-11.1
Q2			10.0	-11.1
Q3			0.0	-11.1
Q4			10.0	11.1
19 Q1			0.0	11.1

Changes in the proportion of loan applications rejected outright



(1) Share of banks reporting an increase minus share of banks reporting a decrease
(2) Available from the first quarter 2015 due to the introduction of a new questionnaire.