

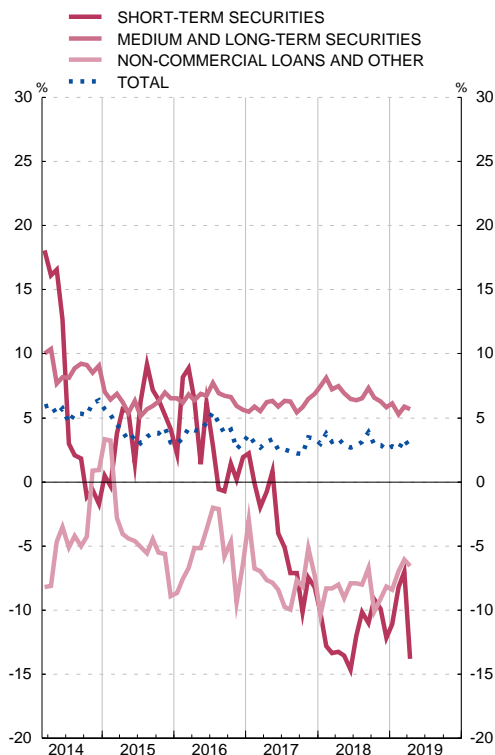
8.8. GROSS FINANCING OF SPAIN'S GENERAL GOVERNMENT

■ Series depicted in chart.

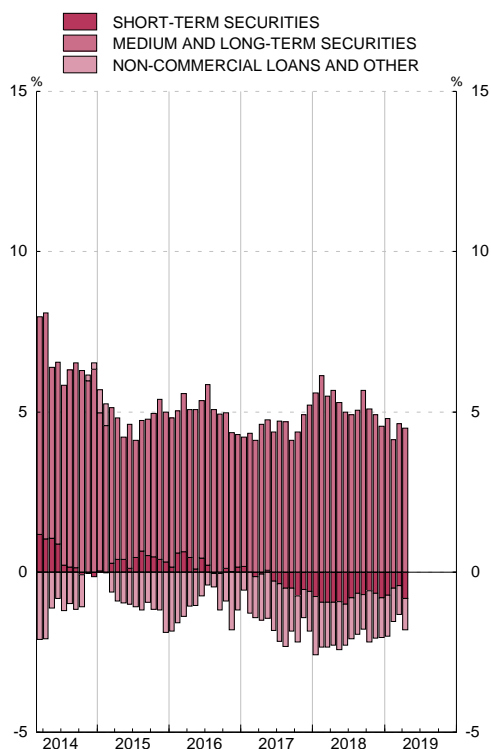
EUR millions and %

	Gross financing			Short-term securities				Medium and long term securities				Non Commercial Loans and Others			
	EDP Debt (a)	Monthly change	12 month % change	Total	Monthly change	12 month % change	Contribution to 12-month % change	Total	Monthly change	12 month % change	Contribution to 12-month % change	Total	Monthly change	12 month % change	Contribution to 12-month % change
	1=4+8+12	2=5+9+13	3	4	5	6	7	8	9	10	11	12	13	14	15
14	1 041 624	62 593	6.4	77 611	-1 365	-1.7	-0.1	744 078	61 944	9.1	6.3	219 935	2 014	0.9	0.2
15	1 073 934	32 310	3.1	80 798	3 187	4.1	0.3	792 772	48 694	6.5	4.7	200 364	-19 571	-8.9	-1.9
16	1 107 220	33 287	3.1	82 375	1 577	2.0	0.1	837 234	44 462	5.6	4.1	187 611	-12 753	-6.4	-1.2
17	P 1 144 425	37 205	3.4	75 603	-6 772	-8.2	-0.6	894 924	57 690	6.9	5.2	173 898	-13 713	-7.3	-1.2
17 Nov	P 1 138 962	8 961	3.5	75 126	2 627	-7.5	-0.5	888 111	10 198	6.5	4.9	175 725	-3 864	-5.2	-0.9
17 Dec	P 1 144 425	5 464	3.4	75 603	477	-8.2	-0.6	894 924	6 812	6.9	5.2	173 898	-1 826	-7.3	-1.2
18 Jan	P 1 145 837	1 412	3.0	74 078	-1 525	-10.2	-0.8	895 711	788	7.5	5.6	176 048	2 149	-10.4	-1.8
18 Feb	P 1 158 152	12 314	3.8	71 882	-2 196	-12.8	-0.9	913 071	17 360	8.1	6.1	173 199	-2 849	-8.3	-1.4
18 Mar	P 1 161 709	3 558	3.1	69 553	-2 329	-13.4	-1.0	919 545	6 474	7.2	5.5	172 611	-588	-8.3	-1.4
18 Apr	P 1 152 359	-9 351	3.4	68 455	-1 098	-13.3	-0.9	911 680	-7 865	7.5	5.7	172 224	-387	-8.0	-1.3
18 May	P 1 157 177	4 819	2.9	66 753	-1 702	-13.6	-0.9	921 490	9 810	6.9	5.3	168 934	-3 290	-9.1	-1.5
18 Jun	P 1 165 768	8 591	2.7	65 894	-859	-14.7	-1.0	929 040	7 550	6.5	5.0	170 834	1 900	-7.9	-1.3
18 Jul	P 1 162 546	-3 222	2.8	66 626	732	-12.0	-0.8	928 137	-903	6.4	4.9	167 783	-3 051	-7.9	-1.3
18 Aug	P 1 164 898	2 352	3.1	65 522	-1 104	-10.1	-0.7	933 158	5 020	6.5	5.0	166 219	-1 565	-8.0	-1.3
18 Sep	P 1 177 514	12 615	3.9	65 143	-379	-11.0	-0.7	944 672	11 514	7.3	5.7	167 699	1 480	-6.7	-1.1
18 Oct	A 1 162 868	-14 646	2.9	65 870	726	-9.1	-0.6	935 527	-9 145	6.6	5.1	161 471	-6 228	-10.1	-1.6
18 Nov	A 1 171 465	8 597	2.9	67 670	1 801	-9.9	-0.7	944 042	8 515	6.3	4.9	159 752	-1 719	-9.1	-1.4
18 Dec	A 1 173 109	1 645	2.5	66 394	-1 276	-12.2	-0.8	947 002	2 960	5.8	4.6	159 714	-39	-8.2	-1.2
19 Jan	A 1 177 700	4 590	2.8	65 849	-545	-11.1	-0.7	950 600	3 598	6.1	4.8	161 251	1 537	-8.4	-1.3
19 Feb	A 1 188 121	10 421	2.6	65 991	143	-8.2	-0.5	961 029	10 429	5.3	4.1	161 101	-150	-7.0	-1.0
19 Mar	A 1 200 258	12 137	3.3	64 672	-1 319	-7.0	-0.4	973 416	12 386	5.9	4.6	162 170	1 069	-6.0	-0.9
19 Apr	A 1 183 465	-16 793	2.7	58 991	-5 681	-13.8	-0.8	963 539	-9 877	5.7	4.5	160 935	-1 235	-6.6	-1.0

GROSS FINANCING OF GENERAL GOVERNMENT
Annual percentage changes



GROSS FINANCING OF GENERAL GOVERNMENT
Contributions to the annual percentage change



FUENTE: BE.

a. Debt according to Excessive Deficit Procedure (EDP). Consolidated nominal gross debt.