

6.1. GENERAL GOVERNMENT. NET LENDING (+)/NET BORROWING (-)

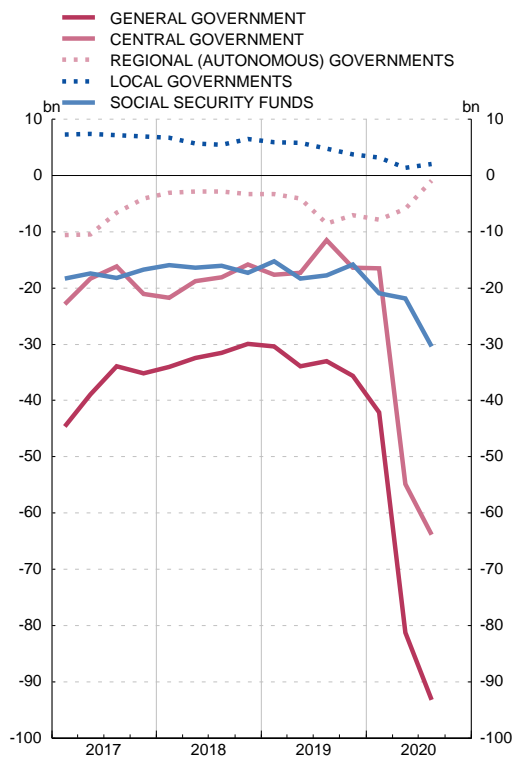
■ Series depicted in chart.

EUR millions

	General government	Central government	Of which:	Regional (autonomous) governments	Local governments	Social security funds
	1 = 2+4+5+6	2	3	(a)	(b)	6
		Total	State			
18		-29 900	-15 786	-17 323		-17 310
19	P	-35 637	-16 421	-16 642	-7 105	-15 859
19 Q4	P	-18 181	-6 711	-8 366	-3 492	-9 518
20 Q1	P	-10 329	-6 453	-6 237	-2 414	-791
Q2	P	-61 733	-42 454	-42 012	-5 002	-12 031
Q3	P	-2 897	-8 220	-8 249	10 013	-8 051
19 J-O	P	...	-6 459	-5 874	-4 543	-5 830
20 J-O	A	...	-58 241	-57 619	1 084	-21 789
19 Dec	P	...	-4 989	-5 740	-4 011	-10 757
20 Jan	P	...	-6 734	-6 071	-872	1 425
Feb	P	...	-5 243	-5 254	263	-619
Mar	P	...	5 524	5 088	-1 805	-1 597
Apr	P	...	-13 495	-13 675	2 111	-4 342
May	P	...	-13 238	-13 083	-1 305	-7 935
Jun	P	...	-15 721	-15 254	-5 808	246
Jul	P	...	-11 492	-11 626	10 720	-2 792
Aug	P	...	-615	-389	-942	-3 594
Sep	P	...	3 887	3 766	235	-1 665
Oct	A	...	-1 114	-1 121	-1 513	-916

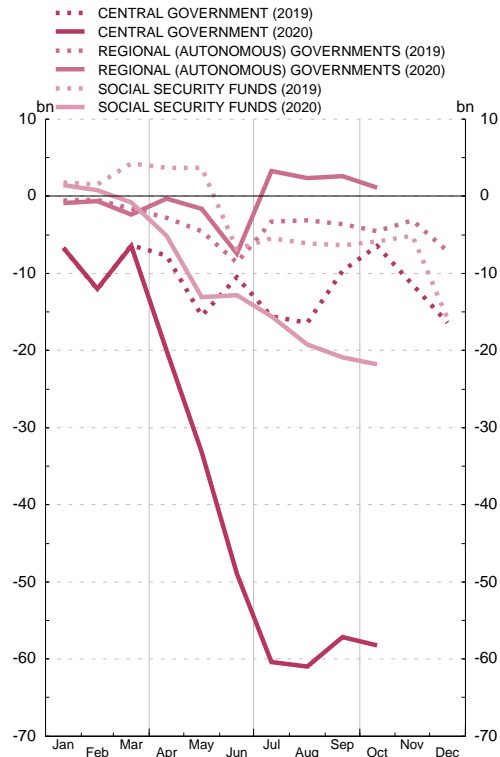
NET LENDING (+)/NET BORROWING (-)

By level of government. 4-quarter moving average



NET LENDING (+)/NET BORROWING (-)

By level of government. Cumulative data from January. Monthly information



SOURCE: Ministerio de Hacienda y Administraciones Públicas (IGAE).

a. Detailed operations are published in indicator 6.3.

b. The breakdown by regional (autonomous) government is published in indicator 6.6.