

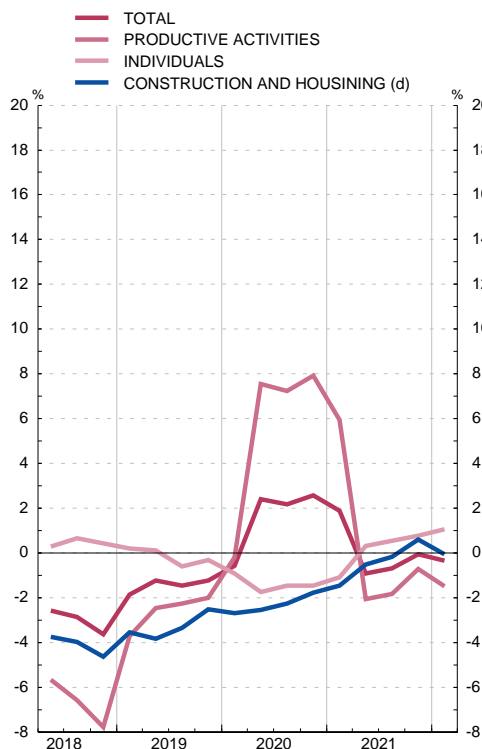
4.12 LENDING BY CREDIT INSTITUTIONS AND CFI's TO OTHER RESIDENT SECTORS. BREAKDOWN BY END-USE.

■ Series depicted in chart.

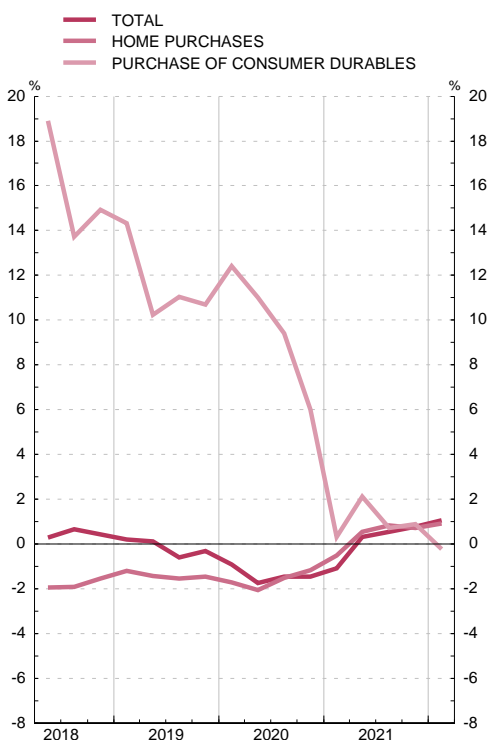
EUR millions and percentages

	Total (a)	Financing of productive activities						Financing of individuals				Financing of private non-profit institutions	Unclassified	Memorandum item: construction and housing (d)		
		Total	Agriculture and fisheries	Industry excluding construction	Construction	Services		Total	Home purchases and improvements	Purchases of consumer durables	Other (b)					
						Total	Of which								Total	Of which
1	2	3	4	5	6	7	8	9	10	11	12	13	14	15		
17	R1 253 916	591 615	20 330	108 533	34 626	428 125	109 998	646 734	521 889	503 027	43 894	80 951	5 170	10 398	666 513	
18	1 208 318	545 599	21 217	105 951	29 079	389 351	93 372	649 564	518 737	500 825	50 443	80 384	5 278	7 878	641 188	
19	1 193 527	534 773	21 428	103 727	26 013	383 604	88 149	647 479	510 868	493 568	55 843	80 767	5 507	5 768	625 030	
20	1 224 458	575 162	22 285	110 873	27 895	414 107	81 943	637 516	504 215	487 855	59 205	74 095	5 709	6 071	614 053	
18 Q4	1 208 318	545 599	21 217	105 951	29 079	389 351	93 372	649 564	518 737	500 825	50 443	80 384	5 278	7 878	641 188	
19 Q1	1 202 180	540 818	21 352	106 108	28 841	384 515	93 587	649 615	517 714	499 675	52 037	79 864	5 010	6 737	640 142	
19 Q2	1 214 790	544 879	21 489	106 307	28 095	388 988	91 030	658 466	516 715	498 788	53 890	87 861	5 282	6 182	635 840	
19 Q3	1 195 701	536 750	21 633	103 986	27 205	383 925	90 357	646 996	513 184	495 311	54 075	79 736	5 430	6 526	630 746	
19 Q4	1 193 527	534 773	21 428	103 727	26 013	383 604	88 149	647 479	510 868	493 568	55 843	80 767	5 507	5 768	625 030	
20 Q1	1 195 487	539 777	21 488	105 507	26 926	385 856	87 853	643 709	508 228	491 160	58 497	76 985	5 476	6 525	623 007	
20 Q2	1 241 445	584 061	22 150	112 632	28 703	420 574	85 542	646 489	505 465	488 615	59 826	81 197	5 714	5 182	619 710	
20 Q3	1 221 810	573 624	22 273	111 256	28 362	411 733	83 829	637 067	504 383	487 772	59 171	73 513	5 823	5 296	616 573	
20 Q4	1 224 458	575 162	22 285	110 873	27 895	414 107	81 943	637 516	504 215	487 855	59 205	74 095	5 709	6 071	614 053	
21 Q1	1 218 084	569 827	22 484	109 527	27 668	410 147	81 529	636 223	504 710	488 594	58 677	72 835	5 624	6 409	613 908	
21 Q2	1 232 484	572 050	22 520	108 090	27 577	413 862	81 700	648 549	507 298	491 343	61 088	80 163	5 496	6 390	616 575	
21 Q3	1 213 528	563 085	22 686	107 391	27 420	405 586	80 498	640 481	507 711	491 814	59 599	73 170	5 423	4 539	615 630	
21 Q4	1 223 700	571 098	22 946	109 894	27 235	411 023	82 101	642 404	510 176	493 146	59 733	72 495	5 268	4 930	619 512	
22 Q1	1 214 017	561 373	23 004	111 242	27 177	399 950	76 707	642 989	511 542	494 854	58 548	72 899	5 179	4 476	615 426	

CREDIT BY END-USE
Annual percentage changes (c)



CREDIT TO INDIVIDUALS BY END-USE
Annual percentage changes (c)



SOURCE: BE.

a. See chapters 4.13, 4.18 y 4.23 of the Statistical Bulletin and their notes which are published at www.bde.es and the notes of changes.

b. Includes loans and credit to households for the purchase of land and rural property, the purchase of securities, the purchase of current goods and services not considered to be consumer durables (e.g. loans to finance travel expenses) and for various end-uses not included in the foregoing.

c. Asset-backed securities brought back onto the balance sheet as a result of the entry into force of Banco de España Circular BE 4/2004 have caused a break in the series in June 2005. The rates depicted in the chart have been adjusted to eliminate this effect.

d. Including: construction, real estate activities and home purchases and improvements. The rates has been adjusted to eliminated the reclassification effect