

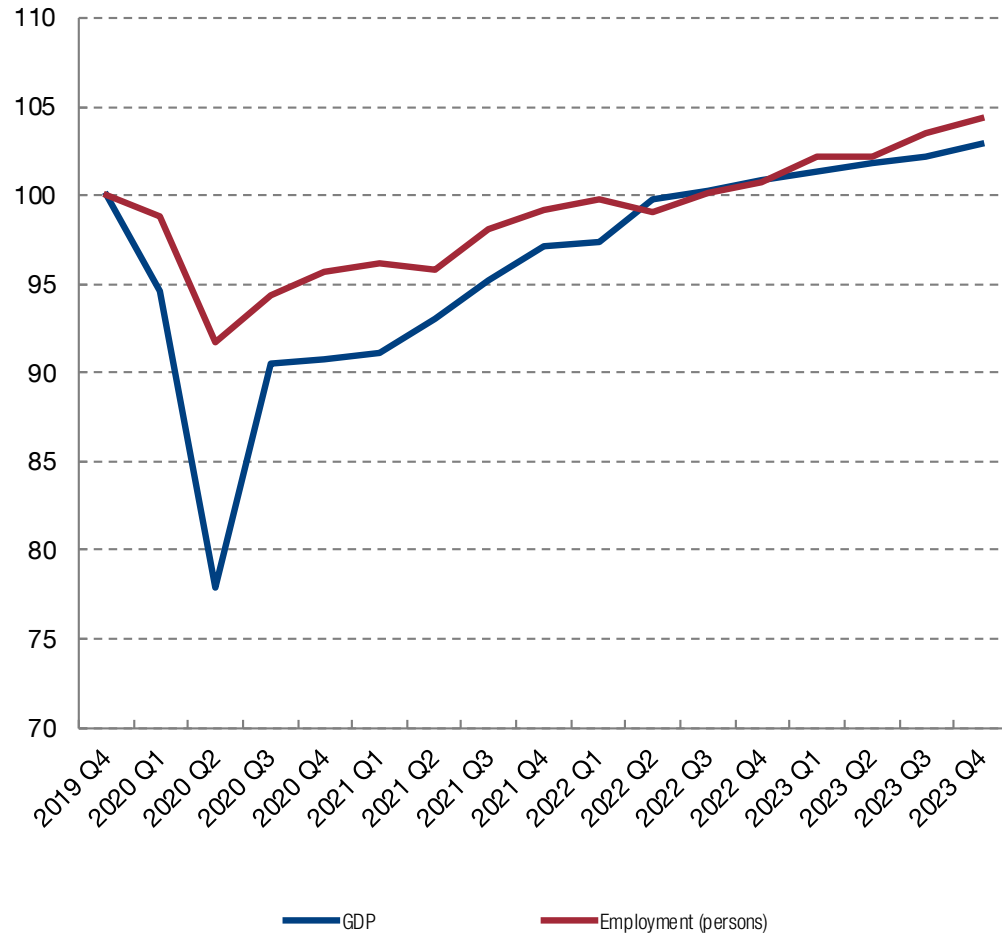
THE SPANISH LABOUR MARKET: RECENT DEVELOPMENTS AND THE CHALLENGES AHEAD

Pablo Hernández de Cos
Governor

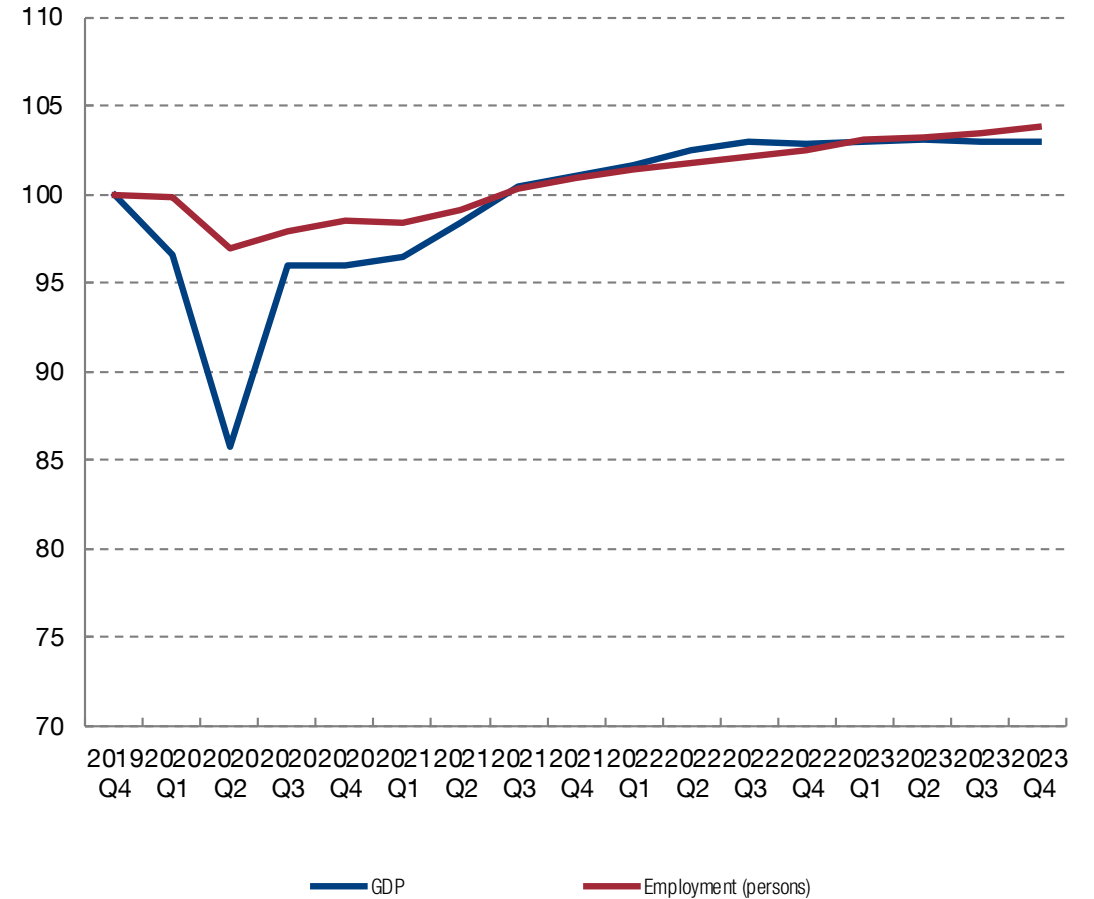
50th ANNIVERSARY OF CUNEF AND LAUNCH OF THE INSTITUTO ESPAÑOL DE
BANCA Y FINANZAS (IEBF)
Madrid
15 February 2024



GDP AND EMPLOYMENT. SPAIN (2019 Q4 = 100)

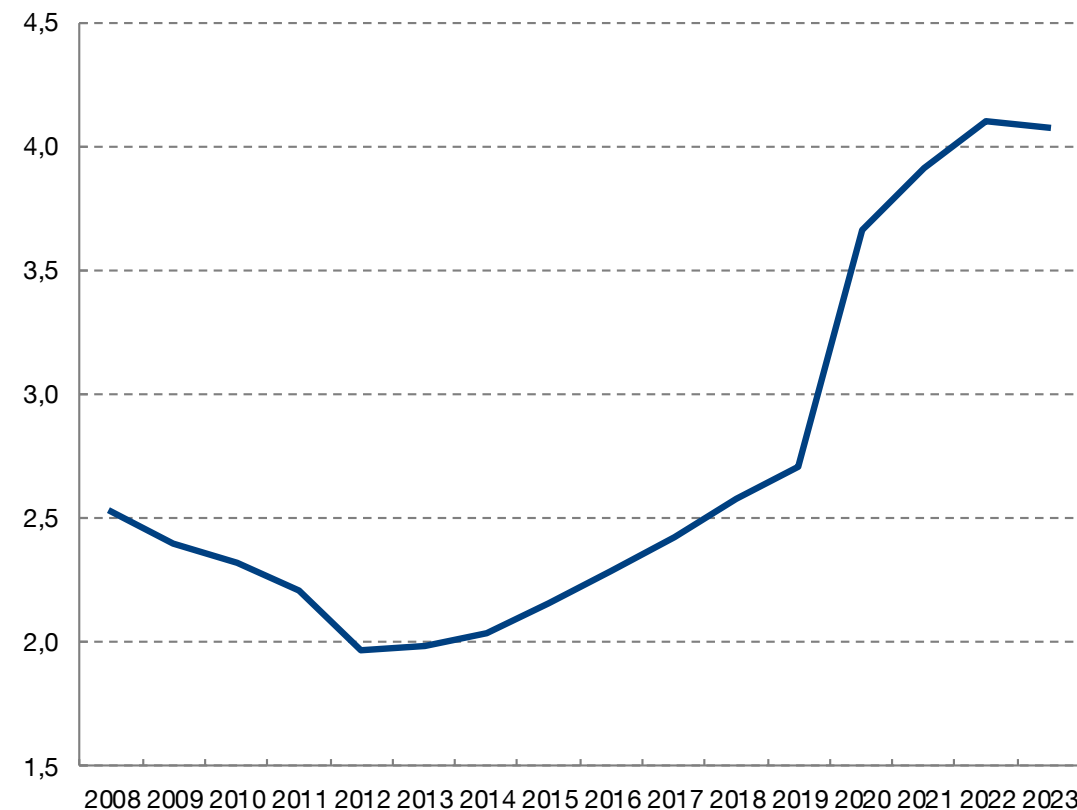
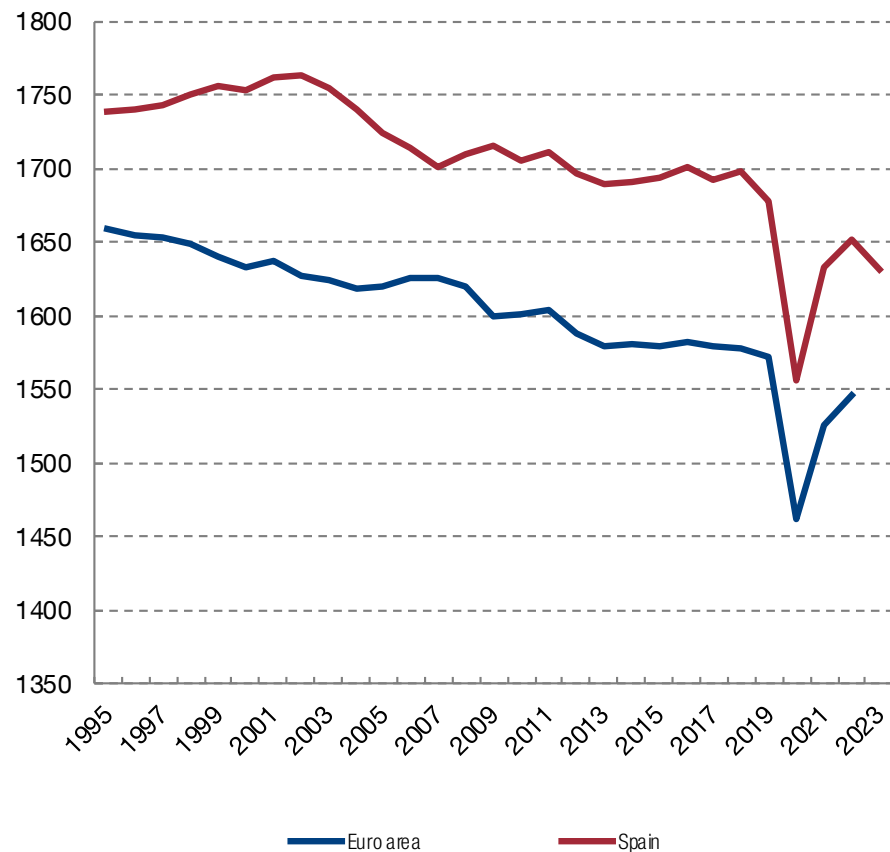


GDP AND EMPLOYMENT. EURO AREA (2019 Q4 = 100)

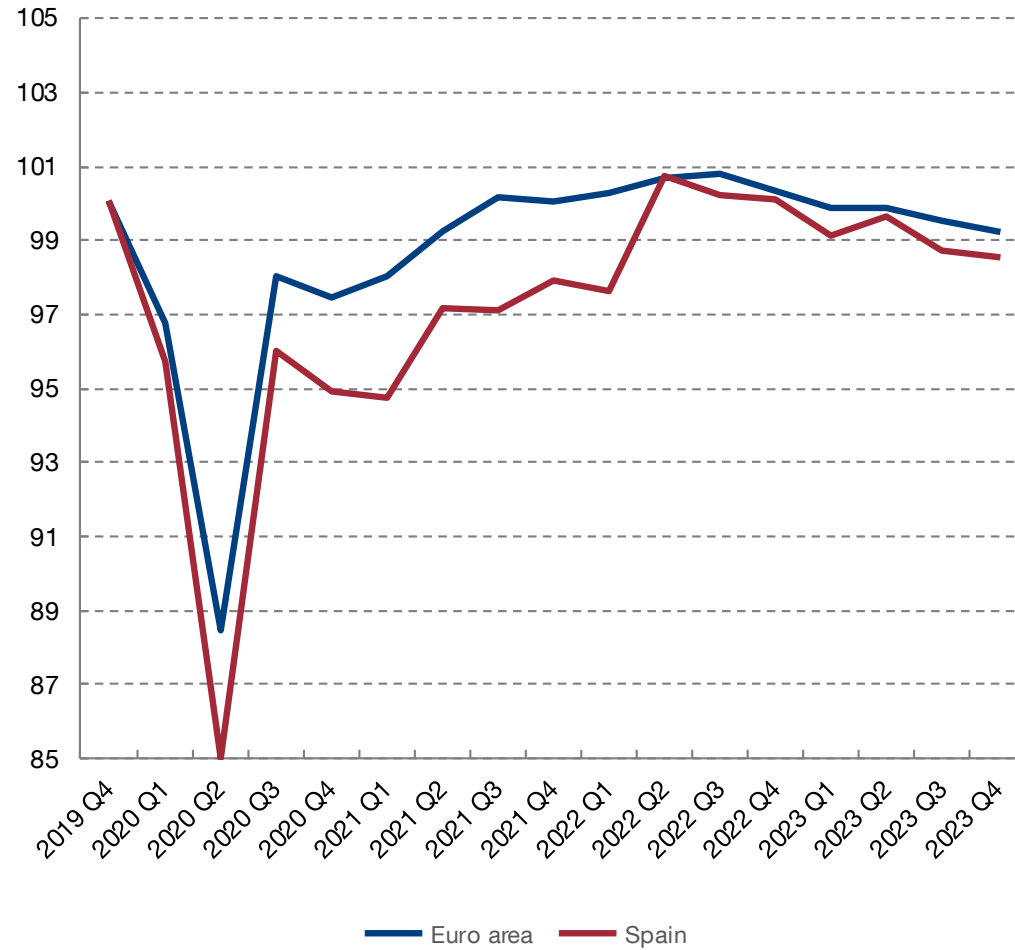


ABSENCE FROM WORK DUE TO SICKNESS, ACCIDENT OR TEMPORARY INCAPACITY (% of total employed). SPAIN

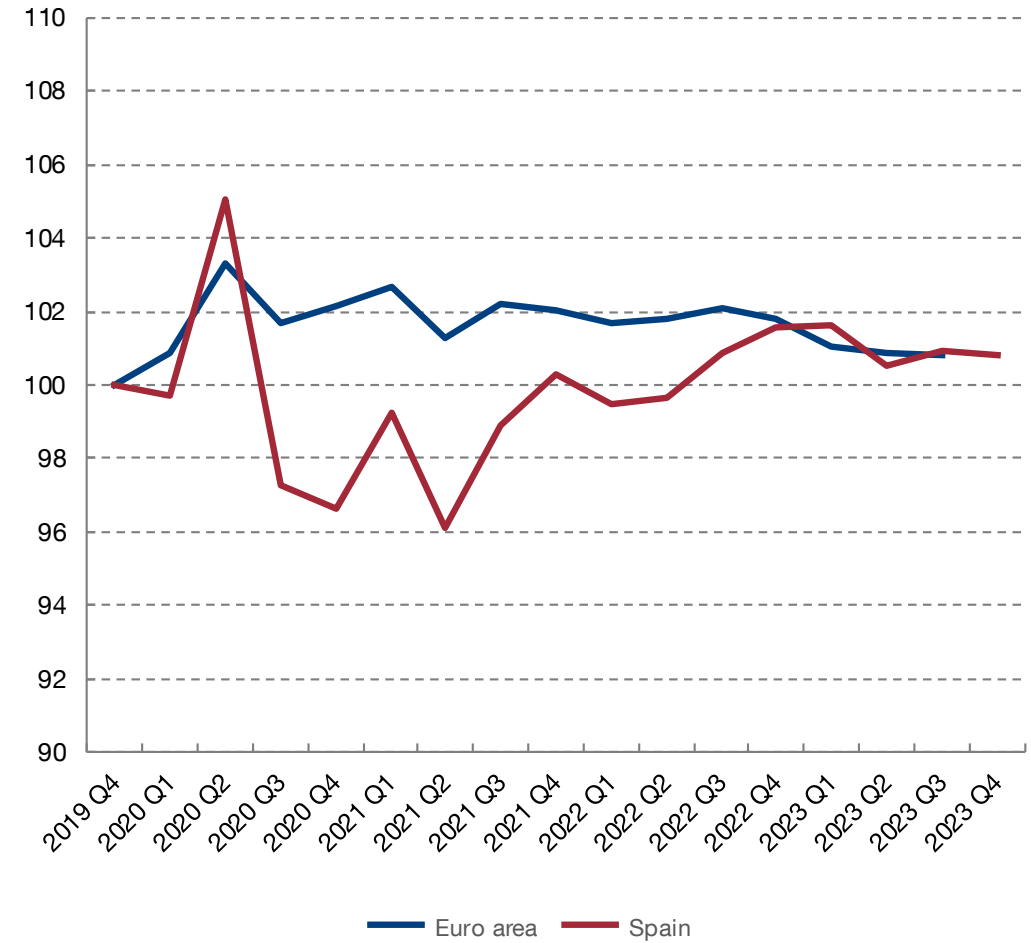
HOURS PER PERSON EMPLOYED



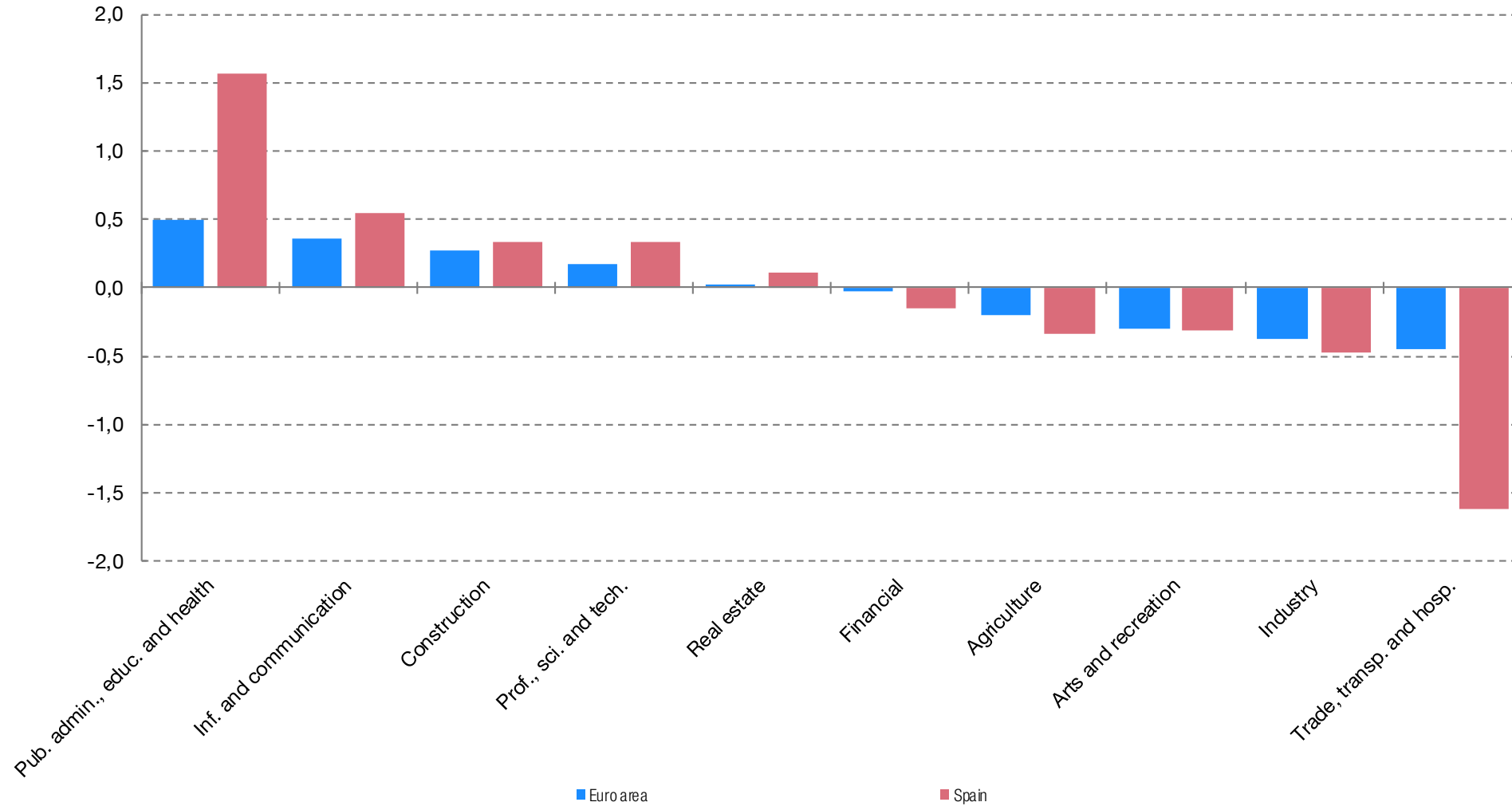
PRODUCTIVITY PER PERSON (2019 Q4 = 100)

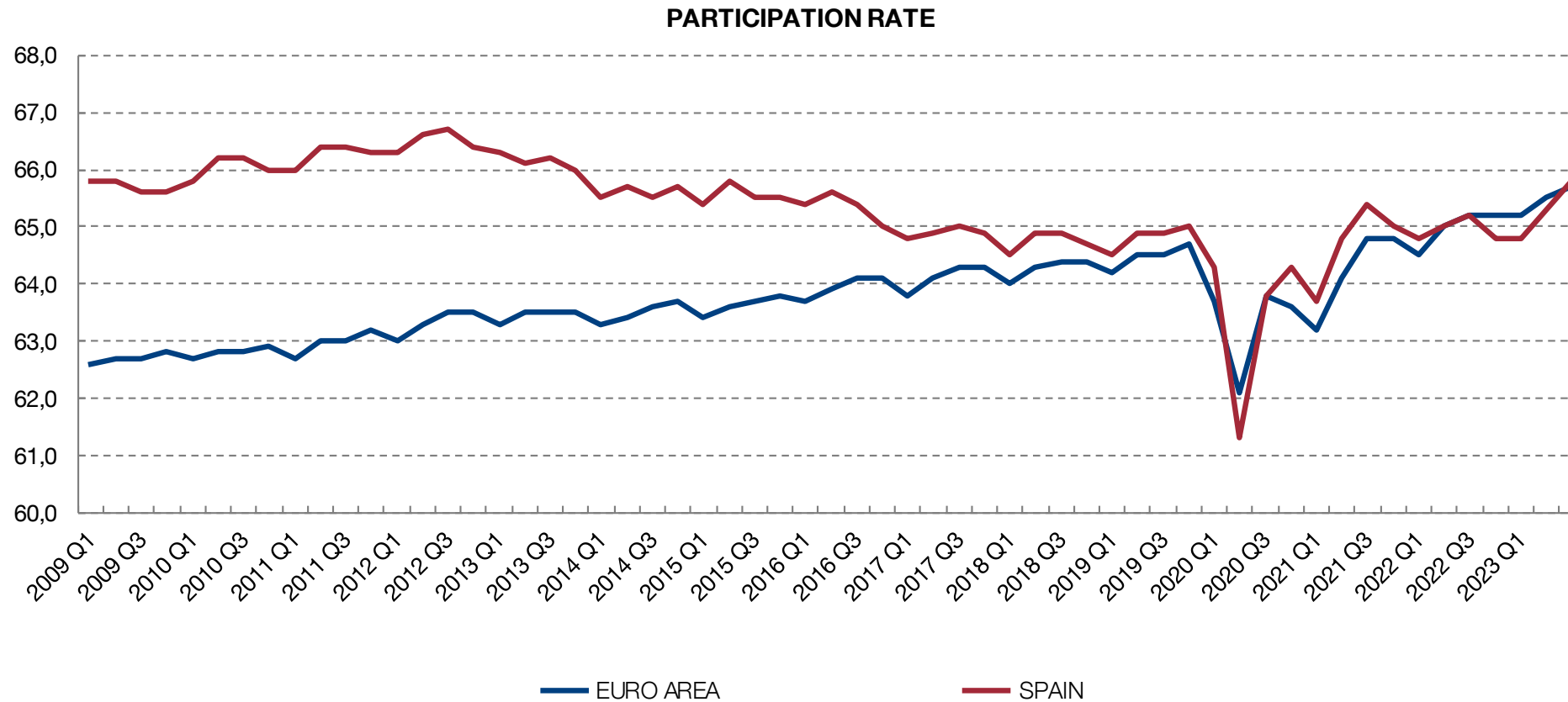


PRODUCTIVITY PER HOUR (2019 Q4 = 100)



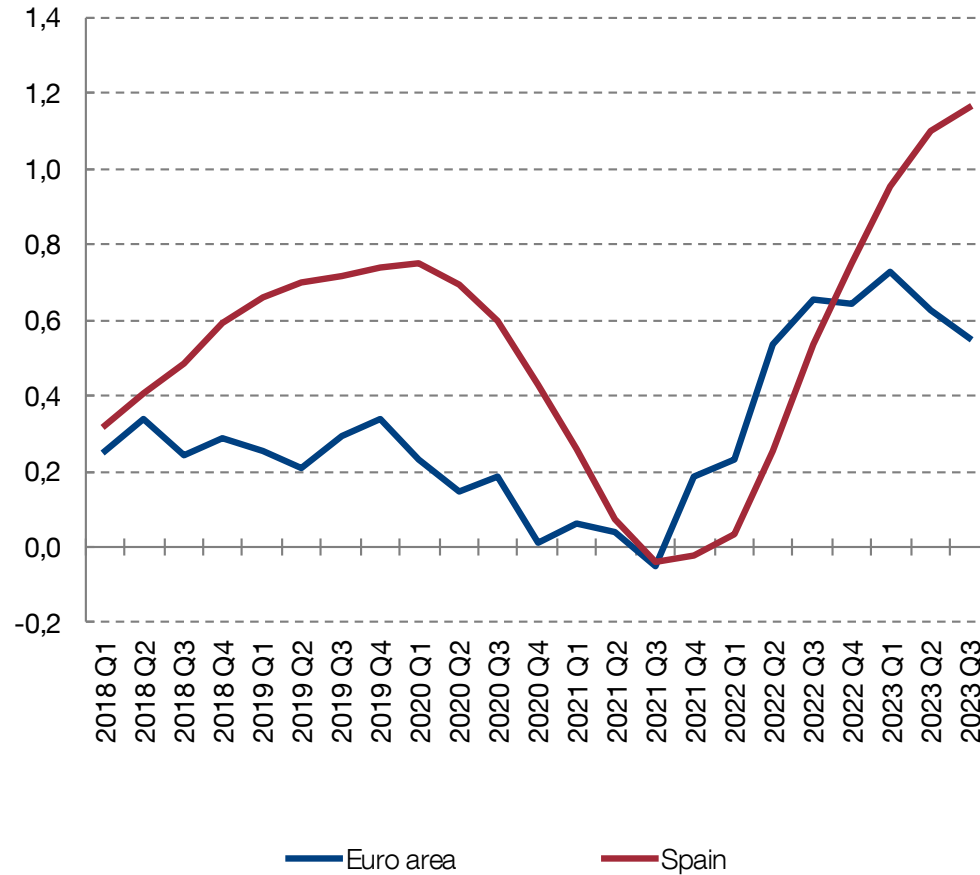
CHANGE IN THE SECTORAL STRUCTURE OF EMPLOYMENT BETWEEN 2019 AND 2023



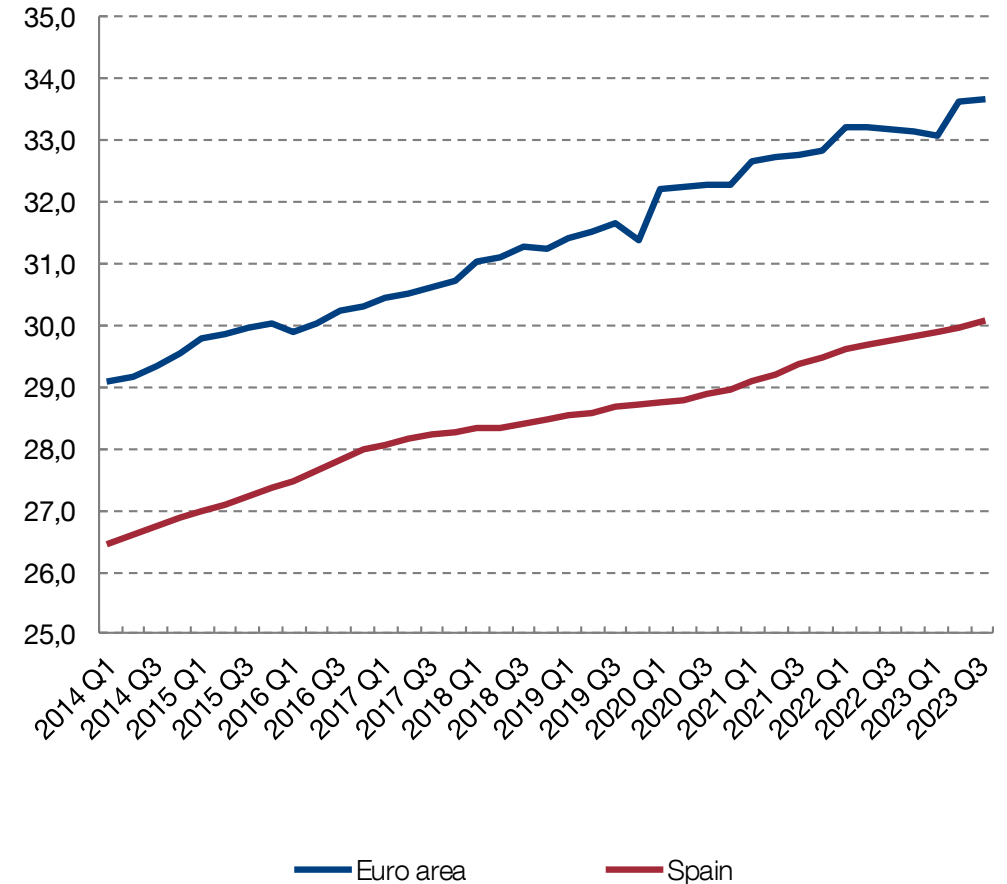


STRONG POST-PANDEMIC RECOVERY OF MIGRATORY FLOWS, WHICH HAVE NOT PREVENTED POPULATION AGEING

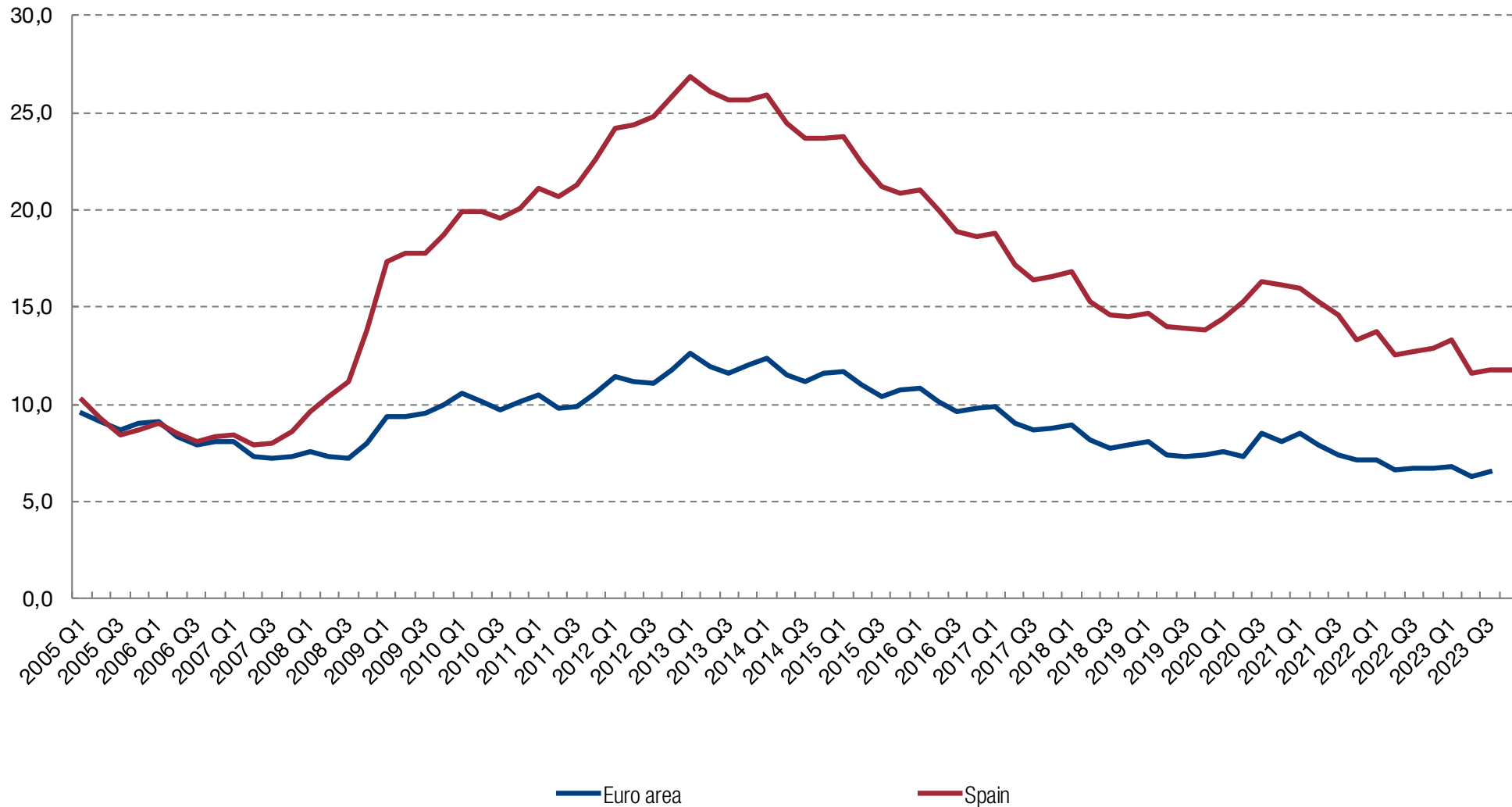
YEAR-ON-YEAR RISE IN THE FOREIGN POPULATION
(% OF TOTAL POPULATION)



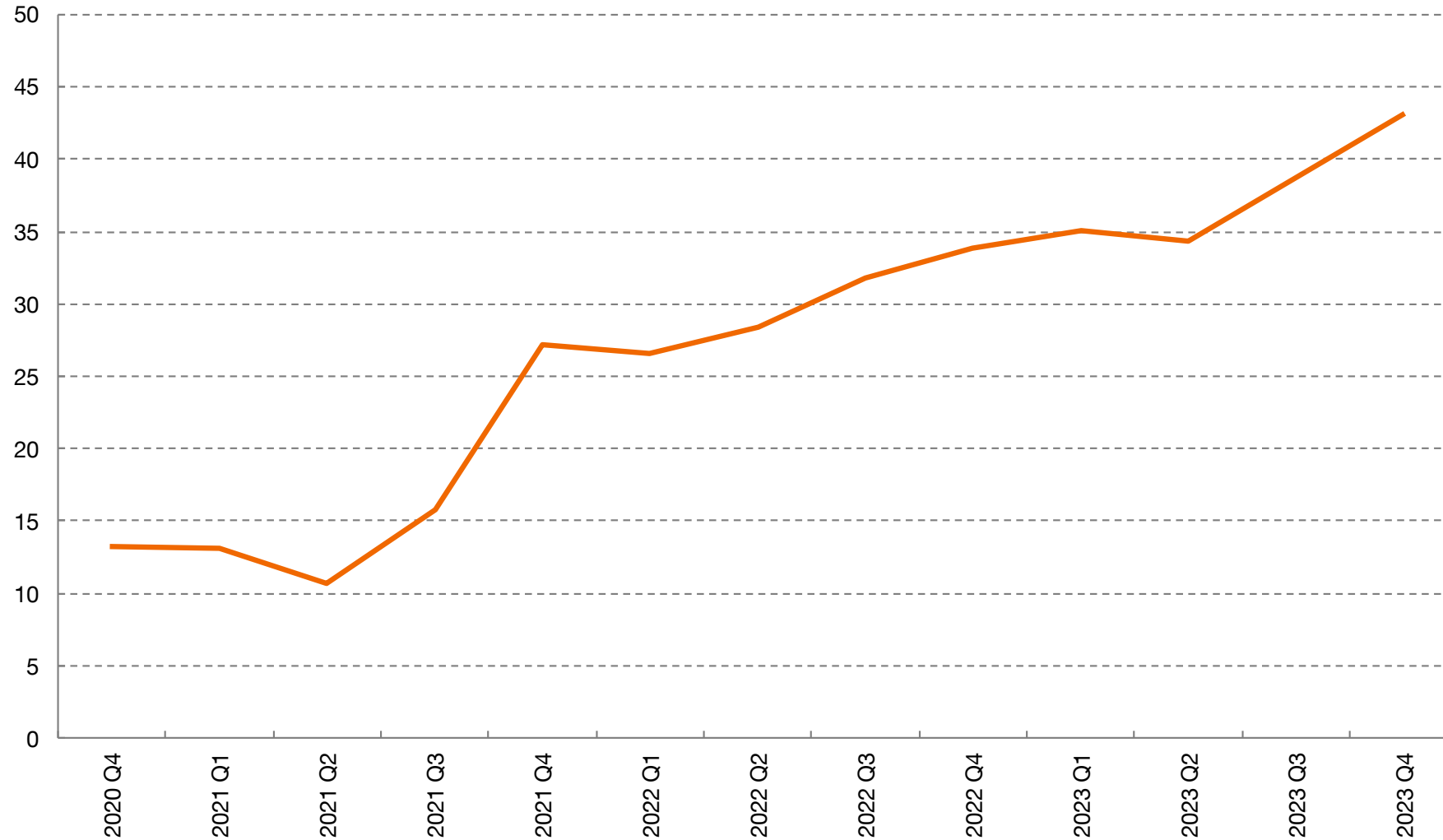
OVER-65s AS A SHARE OF THE POPULATION AGED 15-64
(%)

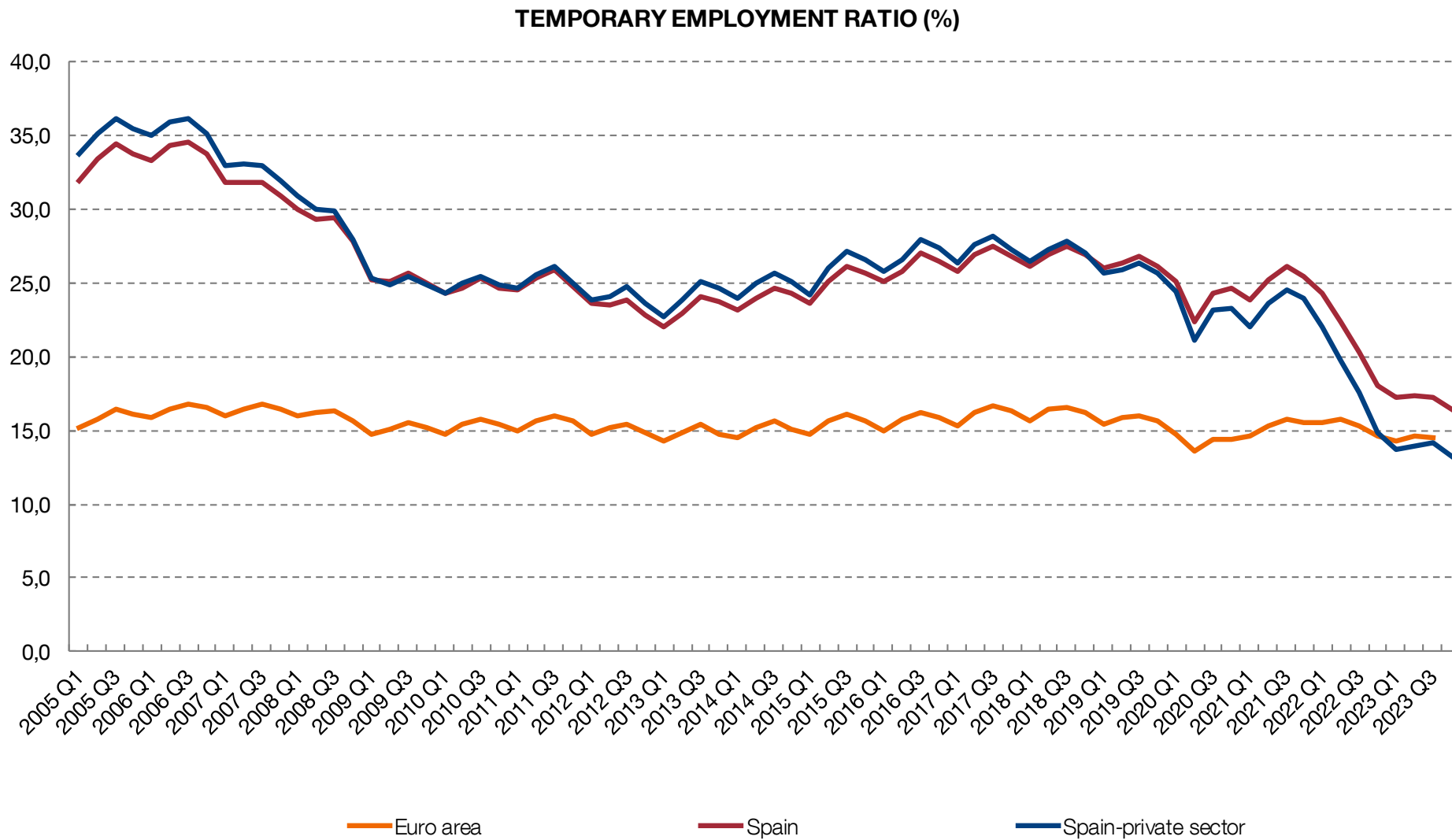


UNEMPLOYMENT RATE

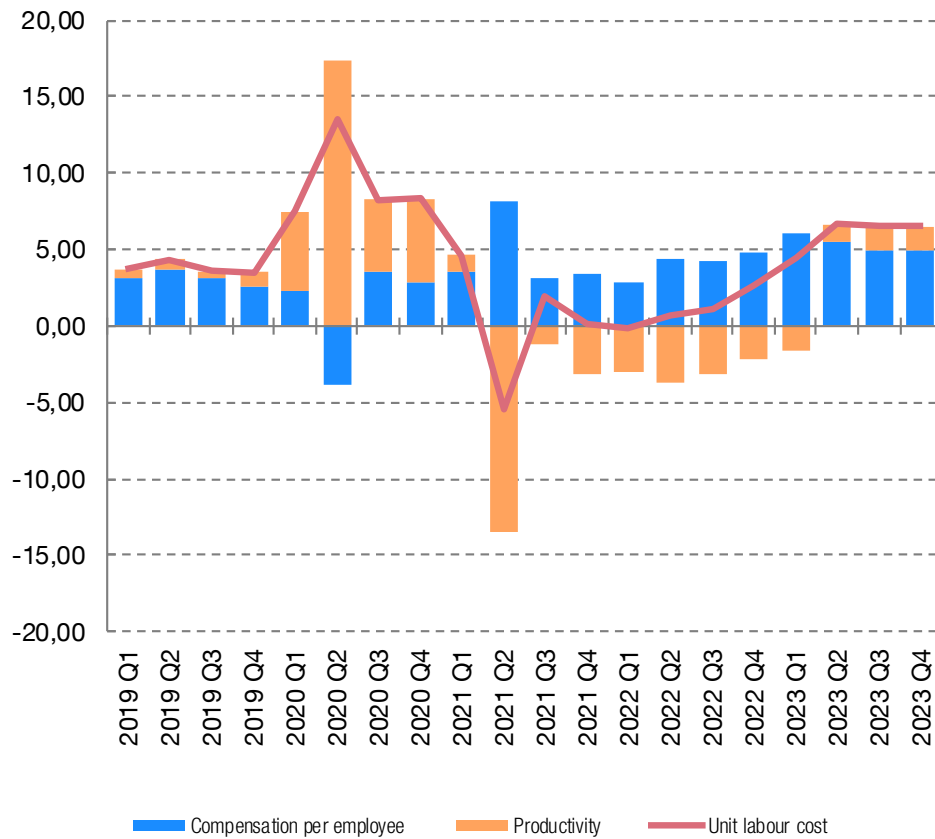


LABOUR SHORTAGES
(Firms reporting a negative impact on their activity, %)





UNIT LABOUR COSTS AND CONTRIBUTIONS OF COMPENSATION PER EMPLOYEE AND PRODUCTIVITY. SPAIN
(% y-o-y change)



UNIT LABOUR COSTS. 2019 Q4 = 100

