

**WHAT EXPLAINS THE LOW  
PROFITABILITY OF CHINESE BANKS?**

**2009**

Alicia García-Herrero, Sergio Gavilá  
and Daniel Santabárbara

**Documentos de Trabajo  
N.º 0910**

**BANCO DE ESPAÑA**  
Eurosistema



**WHAT EXPLAINS THE LOW PROFITABILITY OF CHINESE BANKS?**

## WHAT EXPLAINS THE LOW PROFITABILITY OF CHINESE BANKS? (\*)

Alicia García-Herrero (\*\*)

BANCO BILBAO VIZCAYA ARGENTARIA

Sergio Gavilá and Daniel Santabárbara (\*\*)

BANCO DE ESPAÑA

(\*) The opinions expressed are those of the authors and not necessarily those of the Banco de España or Banco Bilbao Vizcaya Argentaria. We would like to thank Maitena Duce and Pablo García-Luna for their excellent assistance with some of the data. We also thank José Manuel Montero, Daniel Navia, Jesús Saurina and Francisco Vázquez and three anonymous referees for their comments. All remaining errors are obviously ours.

(\*\*) Corresponding authors. E-mail addresses: [alicia.garcia-herrero@bbva.com.hk](mailto:alicia.garcia-herrero@bbva.com.hk); [daniel.santabarbara@bde.es](mailto:daniel.santabarbara@bde.es).

The Working Paper Series seeks to disseminate original research in economics and finance. All papers have been anonymously refereed. By publishing these papers, the Banco de España aims to contribute to economic analysis and, in particular, to knowledge of the Spanish economy and its international environment.

The opinions and analyses in the Working Paper Series are the responsibility of the authors and, therefore, do not necessarily coincide with those of the Banco de España or the Eurosystem.

The Banco de España disseminates its main reports and most of its publications via the INTERNET at the following website: <http://www.bde.es>.

Reproduction for educational and non-commercial purposes is permitted provided that the source is acknowledged.

© BANCO DE ESPAÑA, Madrid, 2009

ISSN: 0213-2710 (print)

ISSN: 1579-8666 (on line)

Depósito legal: M. 26157-2009

Unidad de Publicaciones, Banco de España

## **Abstract**

This paper analyzes empirically what explains the low profitability of Chinese banks for the period 1997-2004. We find that better capitalized banks tend to be more profitable. The same is true for banks with a relatively larger share of deposits and for more X-efficient banks. In addition, a less concentrated banking system increases bank profitability, which basically reflects that the four state-owned commercial banks – China's largest banks – have been the main drag for system's profitability. We find the same negative influence for China's development banks (so called Policy Banks), which are fully state-owned. Instead, more market oriented banks, such as joint-stock commercial banks, tend to be more profitable, which again points to the influence of government intervention in explaining bank performance in China. These findings should not come as a surprise for a banking system which has long been functioning as a mechanism for transferring huge savings to meet public policy goals.

**Keywords:** China; Bank profitability; Bank reform.

**JEL classification:** G21; G28.

## 1 Introduction

There is, by now, overwhelming evidence that a well-functioning financial system is important for economic growth. Indeed, financial intermediation determines, among other factors, the efficient allocation of savings as well as the return of savings and investment.

China's banking sector is the most important component of the financial system (with 66% of total financial assets in 2006) and yet it has long remained undercapitalized and saddled with non performing loans (NPLs). Furthermore, bank capitalization, solvency and profitability are still below international standards.

In 1997, the government started a comprehensive banking reform with the objective of transforming banks into market-functioning and profitable institutions. The reform has so far focused mainly on the restructuring of the largest banks, the 4 state-owned commercial banks (SOCBs), which had long served as lending arm of state-owned enterprises (SOEs). The restructuring has been conducted through capital injections and the carving out of NPLs.<sup>1</sup> The rest of the banking system, with about 45% of total bank assets, has a much diversified structure. First, three state-owned development banks (so-called Policy Banks) are mainly in charge financing long-term projects, such as infrastructure. Second, thirteen partially private banks [so-called joint-stock commercial banks (JSCBs)] are generally the most market-oriented and are, to a larger or lesser extent, privately owned. Third, over one hundred city commercial banks (CCBs), created by restructuring and consolidating urban credit cooperatives, generally operate at provincial level although some have grown much larger. Fourth, more than fifty Trust and Investment Corporations (TICs) intermediate foreign funds to finance local government companies and infrastructure and construction projects. While still relevant, their role and number has been fading over time and they have diversified away.

Foreign participation in the Chinese banking system has two different forms: greenfield investment and acquisition of a minority share. The former is very small in terms of market size and scattered in over 200 foreign affiliates. For the latter, 27 Chinese commercial banks have foreign shareholders but always without control. Three of the 27 are actually SOCBs after having launched their IPOs in Hong Kong Stock Exchange and, in one case, also in that of Shanghai.<sup>2</sup>

In parallel to the restructuring of the SOCBs, Chinese authorities are taking important steps to liberalize the banking system. This includes lifting the ceiling on lending rates and the floor on deposit rates, reducing the share of directed lending and slowly opening up the capital account.

China's bank reform is still ongoing so that it is hard to extract conclusions on how it may affect the functioning of the banking system. However, the success of the reform is so important for China's economic development and, thereby, for the rest of the world, that it is worth analyzing. Furthermore, such conclusions, even if very tentative, might serve as useful suggestions on the direction and speed of the ongoing reform.

---

1. Three of them have basically completed their restructuring while Agriculture Bank of China is still in progress. For more details on the reform, see García-Herrero, Gavilá and Santabárbara (2006).

2. Chen, Li and Moshirian (2005) look into the effects of the first of these IPOs, that of Bank of China.

Among the different aspects of the banking system which could be analyzed, we focus on bank profitability. Healthy and sustainable profitability is vital in maintaining the stability of the banking system. Even if solvency is high, poor profitability weakens the capacity of a bank to absorb negative shocks, which will eventually affect solvency. In this vein, China's transformation from a planned to a market economy implies that profitability will be increasingly relevant for Chinese banks.

Profitability is a reflection of how banks are run given the environment in which banks operate. In fact, banks profitability should mirror the quality of their management and shareholders' behaviour as well as their competitive strategies, efficiency and risk management capabilities.

High profitability is good but also dangerous. In fact, high profitability could stem from strong market power and hamper the efficient intermediation of savings. In turn, low profitability might discourage private agents from conducting banking activities. As far as profitability considerations determine investors' interest in financial institutions and, thus, the possibility to have enough capital to continue operating. Low profitability could also imply that only poorly-capitalized banks intermediate savings, with the corresponding costs for sustainable economic growth. Between these two extremes, Chinese banks lie closer to the latter.

In this paper, we assess empirically which are the main factors behind the low profitability of Chinese banks. To that end, we use data for 87 banks, accounting for more than 80% of total assets, and for the longest relevant period: 1997 to 2004. Our results show that such low profitability is mainly explained by poor asset quality, low efficiency and scarce capitalization. We also find some evidence that concentration of assets in a few large state-owned banks and the scarcity of private-ownership hamper profitability.

The paper is divided into seven sections. After this introduction, Section 2 reviews the existing literature on the determinants of bank profitability. Section 3 shows some stylized facts. Section 4 outlines the empirical methodology and Section 5 reports on the variables and data used. Section 6 presents the main results and Section 7 concludes.

## 2 Literature review in the Chinese context

Given the importance of profitability for the good functioning of the banking system, the literature has devoted a lot of energy to understanding its main determinants. These can be classified in two groups of determinants: bank-specific (either intangible or tangible) and macroeconomic ones.

Intangible bank-specific factors are as important as hard to account for. A good example is the quality of managerial decisions [Berger and Mester (1999)]. The quality of bank management is closely related to corporate governance [DeYoung and Rice (2004)]. China finds itself in a peculiar situation in terms of corporate governance, inherited from its transition to a market economy. In fact, Chinese banks are subject – to a larger or lesser extent – to massive government intervention. In many cases they are not free to choose their asset structure – as credit is directly or indirectly controlled by the central and/or the local governments – or to set interest rates. The quality of corporate governance is specially the case of SOCBs, whose lending is still directed to loss-making SOEs and local government projects. SOCBs, however, are the banks which Chinese trust most because of their implicit government guarantee. Weak corporate governance, therefore, results in low asset quality and high liquidity, hampering profitability.

Among the different aspects of corporate governance, the property structure seems key for the Chinese case. In fact, the degree of government intervention is, to a large extent, reflected in the property structure. Government-owned banks, such as SOCBs and Policy Banks, are subject to more government intervention than banks with a larger share of private ownership (such as JSCBs and several CCBs). In addition, government-owned banks may have objectives different than profitability, such as social or regional development. The existing evidence generally confirms that state-owned institutions are less efficient and have poorer asset quality [La Porta et al. (2002), and Barth et al. (2004)]. For the specific case of China, several papers have shed some light on the effects of property structure. Yao and Jiang (2007) show that state-owned banks were 8-18% less efficient than non state-owned banks. Jia (2009) provides evidence that lending by SOCBs has been relatively riskier but more prudent over time. Lin and Zhang (2009) confirm that SOCBs are the worst performers (except the policy banks) in terms of simple measures of profitability, efficiency and asset quality. Ferri (2009), using a survey of 20 CCBs, finds that institutions located at the East and not controlled by SOEs tend to be associated with better asset quality and higher profitability. Foreign investors also tend to be less dependent on the government. In this vein, foreign banks are generally found to be more profitable than domestic banks in emerging countries [Demirgüç-Kunt and Huizinga (1999), and International Monetary Fund (2000)]. For the specific case of China, Berger et al. (2009) shows that foreign ownership and minor size have been associated with higher efficiency.

We now move to reviewing more tangible bank-specific factors affecting profitability. A first one is bank capitalization. There are several reasons to believe that higher capitalization should foster profitability. First, capital can be considered a cushion to raise the share of risky assets, such as loans. When market conditions allow a bank to make additional loans with a beneficial return/risk profile, this should imply higher profitability. Second, banks with a high franchise value – measured in terms of capitalization – have incentives to remain well capitalized and engage in prudent lending. Third, although capital is considered to be the



most expensive bank liability in terms of expected return, holding a relatively large share of capital is an important signal of creditworthiness. In fact, when depositors exert market discipline, banks with more capital should be able to lower their funding costs.<sup>3</sup> Finally, a well capitalized bank needs to borrow less in order to support a given level of assets. This can be important in emerging countries when the ability to borrow is more subject to sudden stops. Berger (1995) and Goddard et al. (2004) provide empirical evidence of the positive relation between bank capitalization and profitability for the US and the European banking systems, respectively. Demirgüç-Kunt and Huizinga (1999) generalize this evidence for 80 industrial and emerging countries.

A related factor is asset quality. Poor asset quality should reduce profitability in as far as it limits the bank's pool of loanable resources. Such a priori is generally confirmed in developed countries<sup>4</sup> but not always in emerging countries. Brock and Rojas-Suárez (2000), for example, show a negative relationship between bank spreads and NPLs over total loans for most Latin American banking systems. They argue that this is due to distortions caused by inadequate regulation that allow banks to report misstated loan losses. How to account appropriately for asset quality is an issue for emerging countries' banking systems and even more so for China.

Another tangible bank-specific factor is bank efficiency. A more efficient bank should be able to make a more effective use of its loanable resources fostering profitability. For example, Demirgüç-Kunt and Huizinga (1999) estimate that 17% of banks' overhead costs are passed on to depositors and lenders while the rest reduces profitability. Bank overhead costs, though, are a very rough measure of efficiency. More recently, a more sophisticated measure, namely X-efficiency, has come to the forefront. It measures how a particular set of prices and quantities of inputs and outputs vary, in accordance with the banks' chosen strategy, and how it impacts bank profitability. Berger (1995) finds that X-efficiency is consistently associated with higher profits for a large sample of banks. For the case of China, Berger et al. (2009) show that Chinese state-owned banks, in particular SOCBs, are the least efficient, and conclude that modernizing them would significantly improve China's banking performance.

The balance sheet structure of a bank is also bound to affect profitability. On the asset side, a larger share of loans to total assets should imply more interest revenue because of the higher risk. However, loans also have higher operational costs because they need to be originated, serviced and monitored. All in all, profitability should increase with a larger share of loans to assets as long as interest rates on loans are liberalized and the bank applies mark-up pricing. In this vein, Demirgüç-Kunt and Huizinga (1999) report that banks with a relatively high share of non-interest earning assets are less profitable. The asset structure is also very much influenced by regulation and by administrative controls, which are pervasive in China. Fry (1994) shows that administered lending and deposit rates result in the misallocation of credit. On the liability side, a larger proportion of deposits should, in principle, increase profitability as they constitute a more stable and cheaper funding compared to borrowed funds. However, they also require widespread branching and other expenses. The latter seems to prevail for a wide sample of developed and emerging banking systems [Demirgüç-Kunt and Huizinga (1999)].

---

3. Beyond the evidence for industrial countries, Martínez-Peria and Schmukler (1998) show that depositor market discipline exists for some emerging countries (namely Argentina, Chile and Mexico).

4. See Angbazo (1997) as an example.

Bank size is generally considered a relevant determinant of profitability but there is no consensus on the direction of influence. On the one hand, a bank of a large size should reduce costs because of economies of scale or scope. In fact, more diversification opportunities should allow to maintain (or even increase) returns while lowering risk. On the other hand, large size can also imply that the bank is much harder to manage or it could be the consequence of a bank's aggressive growth strategy. The empirical evidence is also mixed. Goddard et al. (2004) and García-Herrero and Vázquez (2007) show that very large banks in the industrial countries tend to be more profitable. Stiroh and Rumble (2006), in turn, show the downside of size. In the Chinese case, a larger size seems associated with more government intervention since the largest banks are the four SOCBs with a large share of government ownership and massive intervention.

As for size, market power may influence profitability, according to two well-known theoretical models. The first one is the structure-conduct-performance hypothesis, which asserts that a positive relationship between the interest rate margin and concentration (a proxy for market power) reflects non-competitive pricing behaviour. The second one is the efficient-structure hypothesis, for which a bank's higher interest margin is attributable to more operational efficiency, better management or better production technologies. Since these banks will also gain a larger market share (another proxy for market power), the structure will become more concentrated due to efficiency gains [Berger (1995)]. The policy implications of the two hypotheses go in opposite directions. Under the structure conduct theory, high profits stem from market power so that antitrust regulation is welcome to allocate resources more efficiently. By contrast, under the efficient-structure hypothesis, breaking up efficient banks, or forbidding them to grow, may raise social costs by leading to less favourable prices for consumers. The empirical evidence on concentration or market share and profitability is mixed. For the Chinese case, Fu and Heffernan (2009) test the structure-conduct-performance and the efficient structure hypotheses and find that the former fits the Chinese case but only before economic and financial liberalization started, that is, before 1992. In other words, at least prior to the reform, very large banks did not seem to do any good to the performance of the Chinese banking system. As we shall show later, we reach a similar conclusion even in the latest years.

Another important feature of the profitability is its persistence. Under contestable markets, excess profit generated in the market will not persist given that it would attract new competitors. In this regard, profits persistence has been related to the existence of barriers to competition such as government regulation and or high entry costs and, hence, the potential existence of market power [Mueller (1977), Berger et al. (2000), and Goddard et al. (2004)]. In the case of China, high governmental intervention and regulations avoiding the domestic and foreign entry should result in profit persistence.

Finally, the macroeconomic environment may also influence bank profitability through many different channels. Credit risk, for example, is influenced by economic growth, inflation and the level of real interest rates as they affect the borrower's repayment ability and the value of collateral. Demirgüç-Kunt and Huizinga (1999) show empirical evidence that rapid economic growth and high real interest rates increase profitability for a large number of countries. Inflation is generally associated with higher profitability as it implies additional earnings from float, which tend to compensate for the higher labour costs [Hanson and Rocha (1986), Bourke (1989), and Boyd et al. (2001)]. Higher real interest rates have also been found to foster profitability, especially in developing countries [Demirgüç-Kunt and Huizinga (1999)]. This may reflect the fact that demand deposits frequently pay zero or below

market rates, even more so in developing countries. In the same vein, interest rate volatility generally implies higher interest margins as banks generally manage to transfer the higher risk to their clients [Ho and Saunders (1981); Maudos and Fernández de Guevara (2004)].

### 3 Stylized facts

The profitability of Chinese banks<sup>5</sup> is low compared to international standards. We conduct a quick comparative analysis of the profit and loss account of Chinese banks with those from countries having also gone through a transition from a planned economy and a profound bank reform, namely Eastern European countries (Table 1). We observe that Chinese banks have a lower net interest margin and also a lower operating income, both as a percentage of total assets. However, they do have a higher cost to income ratio and a much lower pre-provision profit due to massive provisioning and write-offs.

**Table 1. International comparison of performance measures**

<i>(in percentage)</i>	2004	
	China	Eastern Europe
ROA	0.4	1.8
Net Interest Margin (*)	2.2	5.1
Operating Income(*)	2.6	6.3
Cost to Income (*)	47.2	21.7
Pre-Provision Profit (*)	42.6	60.1
Capital ratio	4.0	11.0
NPL ratio	13.0	2.7
Loan Loss Reserves over total loans	5.5	6.3

(\*) Over total assets

Source: Bankscope.

The above comparison actually hides an important feature of Chinese bank profitability, namely its steady improvement in recent years. In fact, the return on average assets (ROA) was as low as 0.21 in 1999 but improved to around 0.4 in the last two years for which data is available, namely 2003 and 2004 (Chart 1). Such improvement is concentrated on SOCBs although their starting level was very low. As we discuss later, this is probably related to the transfer of NPLs outside these banks' balance sheet into asset management companies (AMCs). In turn, the ROA of JSCBs has fallen substantially in the last few years, albeit from a higher starting level than SOCBs. When taking an alternative measure of profitability that excludes provisioning of NPLs, namely pre-provision profit over assets, we find a similar trend for SOCBs but a better one for JSCBs. This points to a massive provisioning policy for JSCBs.

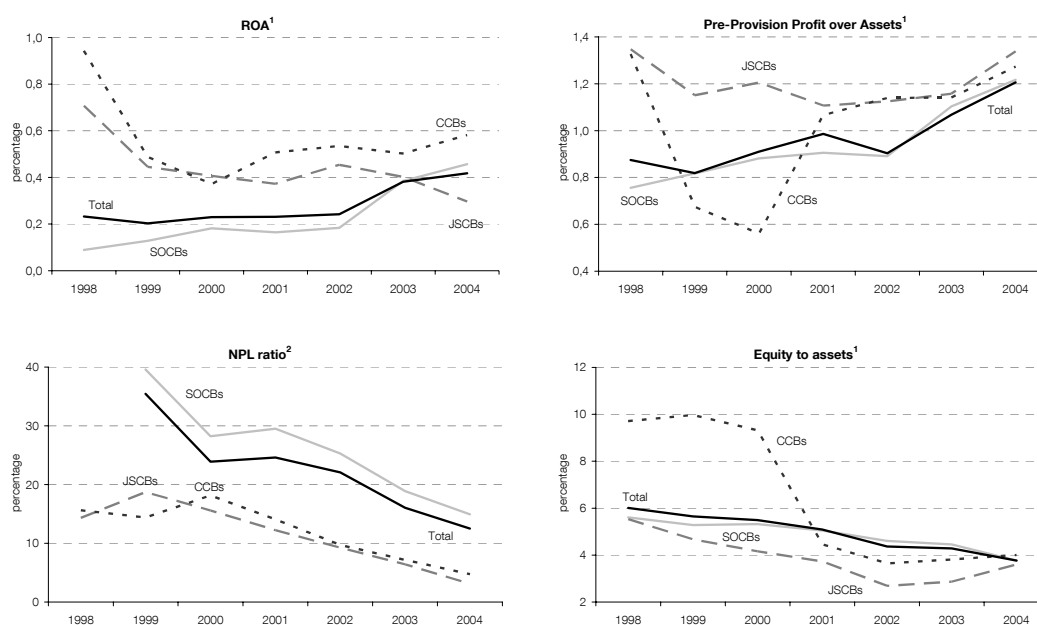
Chinese banks generally suffer from poor asset quality. The ratio of NPLs to total loans for the banking sector was around 13% in 2004, well above international standards (2.7% for Eastern Europe banks in the same year as shown in Table 1 above). Nonetheless, the different waves of restructuring carried out by the Chinese government since 1998 have reduced the NPL ratio to less than 10% at the end of 2005 from 30% in 1997. In any event, asset quality is still a problem, not only because the level of NPLs is still high, but also because of the ratio of provisioning to NPLs is well below international standards. In 2004, the ratio of loan loss reserves to gross loans was less than 5.5%, as compared to 6.3% in the Eastern Europe.

5. Based on consolidated statements.

The capitalization of Chinese banks, measured by the capital to assets ratio, is also lower than that of Eastern European banks. More specifically, the equity to assets ratio was 4% in 2004, as compared to 11% for Eastern European banks. Even more worrisome is that this ratio has fallen since 1998. The largest fall was concentrated in other commercial banks although the starting level was also much higher. JSCBs are the least capitalized group, mainly because of their aggressive expansion without additional capital injections. The capital to assets ratio of SOCBs also fell somewhat since 1998 and notwithstanding the several waves of recapitalizations.

In sum, these stylized facts show that the low profitability which characterises the Chinese banking system comes hand in hand with poor asset quality and low capitalization. To reach firmer conclusions as to the importance of these factors, we move to the empirical section where other potential determinants of profitability will be controlled for.

**Chart 1. Stylized facts**



Source: Bankscope

Notes: <sup>1</sup> Weighted by each bank's assets

<sup>2</sup> Weighted by each bank's loans

## 4 Methodology

The main goal of this paper is to test which are the key determinants of the low profitability of Chinese banks. Following the literature and taking into account's China's particular characteristics, we consider bank-specific factors as well as macroeconomic ones.

We focus on two definitions of profitability: the pre-provision profit and the ROA, which subtracts the amount of provisioning from the pre-provision profit. We estimate two different models because of the challenges in dealing with NPLs and provisioning data for Chinese banks. Not only is the existing data scarce but also not always comparable across banks as NPLs are constructed following different loan classification systems. In addition, loan loss provisioning is generally used as a proxy of asset quality but this is not possible in the Chinese case. In fact, the relation between the flow of NPLs and provisioning is rather weak<sup>6</sup> since Chinese banks have only recently stepped up their provisioning and, in many cases – specially the SOCBs – such provisioning is mandatory and not a consequence of banks' strategies. This is also why provisioning is more correlated with the stock of NPLs than the flow.

When estimating bank profitability, either measured by the ROA or by the pre-provision profit, we face a number of challenges. One is endogeneity: as an example, more profitable banks may be able to increase their equity more easily by retaining profits. They could also pay more for advertising campaigns and increase their size, which in turn might affect profitability. However, the causality could also go in the opposite direction, as more profitable banks may hire more personnel, reducing their operational efficiency.

Another important problem is unobservable heterogeneity across banks, which could be very large in the Chinese case given differences in corporate governance, which we cannot measure well. Finally, the profitability could be very persistent for Chinese banks because of political interference. This is particularly the case for state-owned banks, which are imposed targets on asset quality and profitability.

We tackle these three problems together by moving beyond the methodology currently in use in this empirical literature of bank profitability (mainly fixed or random effects)<sup>7</sup>. We employ the Generalized Method of Moments (GMM) following Arellano and Bover (1995), also known as system GMM estimator. This methodology accounts for endogeneity, the system GMM estimator uses as instruments lagged values of the dependent variable in levels and in differences, as well as lagged values of other regressors which could potentially suffer from endogeneity. We instrument for all regressors except for those which are clearly exogenous.<sup>8</sup> The variables treated as endogenous are shown in italics in the result tables below. The system GMM estimator also controls for unobserved heterogeneity and for the persistence of the dependent variable. All in all, this estimator yields consistent estimations

---

6. The correlation between the stock of loan loss reserves and that of NPLs is 0.43. In turn, the correlation between loan loss reserves and the flow of NPLs is negative (see Table A-4 in the appendix).

7. Recent studies use fixed or random effects, for example, Maudos and Fernández de Guevara (2004) and Claes and Vander Venet (2005). Previous ones, such as Angbazo (1997) and Demirgüç-Kunt and Huizinga (1999) employ generalized least squares and weighted least squares, respectively.

8. In particular, we assume that strictly exogenous variables have no correlation to the individual effects, while the endogenous variables are predetermined.

of the parameters. The estimated coefficients are also more efficient since an ampler set of instruments is considered.

The last challenge is the risk of omitted variables. To that end, we follow a general to specific strategy by estimating an equation with all possible regressors according to the exiting literature and China's specific characteristics. We, then, test – through a Wald test – the joint hypothesis that the coefficients of the variables that are not significant individually are equal to zero. If not rejected, we re-estimate the model only with the controls which were significant in the general regression. Otherwise, we test a less restrictive hypothesis but still trying to reduce the number of non-significant regressors to the maximum extent possible. We stop reducing the number of regressors when we can reject that the remaining set of coefficients of the control variables is equal to zero. The coefficients obtained in this way are even more efficient as the number of regressors is reduced to the minimum.

All in all, and notwithstanding data limitations, the methodology followed – system GMM estimator – controls for potential endogeneity, unobserved heterogeneity and the persistence of the dependent variable, measuring profitability. This methodology should yield consistent estimators. In addition, all possible instruments are used and jointly not significant regressors are eliminated so as to obtain the most efficient estimators possible.

We conduct a number of robustness tests. The most important is related to the nature of our sample: large N and small T, which does not allow the accurate estimation of N-invariant regressors (mainly macroeconomic ones). We, thus, introduce a second model where macroeconomic regressors are substituted by time dummies. In addition, in order to allow the comparison with other studies on bank profitability, we conduct robustness tests with more rudimentary methodologies for panel data, such as fixed effects and OLS. Results are relatively similar and are available upon request.<sup>9</sup>

---

<sup>9</sup>. Such simple models also help account for the fact that a large sample is needed for the properties of the GMM estimator to hold asymptotically.

## 5 Variables and data issues

Our panel is composed of annual data for 87 Chinese banks over the period 1997-2004. This accounts for the main universe of Chinese banks holding more than 80% of total assets. Since not all banks have information for every year and banks have merged or closed, we opt for an unbalanced panel not to lose degrees of freedom. All in all, our sample contains 402 observations corresponding to a number of banks that varies from a minimum of 38 in 1998 to a maximum of 68 in 2003.<sup>10</sup> It should be noted that the sample used is less than the total number of observations in the database because the information has been filtered using two criteria: (i) outliers<sup>11</sup>, and (ii) those observations without data for any of the variables necessary for estimating profitability and asset quality have been dropped. Table A-2 in the Appendix shows some descriptive statistics and Table A-3 the balance sheet and income statement of our sample.

Bank-specific information was mainly obtained from the Bankscope database maintained by Fitch/IBCA/Bureau Van Dijk, which includes income statements and balance sheet information according to Chinese accounting standards. For the sake of accuracy, we contrasted the data with the original source, the Almanac of China's Finance and Banking for those banks for which data were available (namely 13 out of the 87 in our sample).<sup>12</sup>

We use unconsolidated statements whenever possible, although in some cases we have to rely on consolidated ones because of data availability.<sup>13</sup> Unconsolidated data is preferred to avoid relevant differences in profit and loss statements and balance sheets of headquarters and subsidiaries compensating each other. All the banks ratios are calculated based on the standardised global accounting format used by Bankscope.

Bank profitability is proxied in many different ways in the empirical literature. One is the spreads between the contractual rate charged on loans and that paid on deposits. Albeit often used (given its availability for a large sample of countries), it is a very imperfect measure of profitability. In fact, it is simply an *ex-ante* measure which does not take into account how the bank is run.

A second measure is the interest margin (i.e., the difference between banks' interest revenues and their interest expenses). This can be regarded as an *ex-post* interest rate spread. If net, it also controls for the amount of assets each bank has, which gives an idea of how efficiently funds are intermediated. For the net interest margin to be a good measure of profitability, interest rate revenues and expenses should be closely related to banks'

---

**10.** Mergers and closures explain that the total number of banks is 87 while the maximum number, within one single year, is 68.

**11.** We consider as outlier values whose with cumulative frequency is under 1% or above 99% and their deviation from the mean is higher than three times the variable's standard deviation.

**12.** The Almanac of China's Finance and Banking provides the profit and loss statements and balance sheets of SOCBs, six JSCBs and the Policy Banks. Besides these banks, Bankscope provides the income statements and balance sheets of 4 JSCBs more and a good number of city commercial banks and credit cooperatives. For two JSCBs (Hua Xia Bank and China Minsheng Banking Corporation), there are differences between the break down of net income in interest income and non interest income but not in the total net income and the remainder items of the income statement and balance sheet. Furthermore, 2003 data for the China Construction Bank and the Bank of China include revisions in Bankscope but not in the Almanac of China's Finance and Banking so we have preferred to maintain the most updated inversion (i.e., that of Bankscope)

**13.** For two SOCBs, Industrial & Commercial Bank of China and Bank of China, we have selected consolidated data because the number of NPLs data is higher than in unconsolidated data.



behaviour, and not to government decisions. This makes it inappropriate for the Chinese case.<sup>14</sup> Finally, the (pre-tax) ROA and the return on average equity (ROE) are more comprehensive measures of bank profitability as they include operational efficiency and loan loss provisioning. We consider the ROA more appropriate than the ROE for the Chinese case, as bank equity is abnormally low and it has suffered important artificial changes due to the recapitalization programs of the government. In any event, we estimate the same model for the ROE and the results are basically maintained.<sup>15</sup> In addition to the ROA, we also explore the determinants of the pre-provision profit due to ad-hoc provisioning policy that most Chinese banks have followed during the last few years.

As for the regressors, we include the bank-specific and macroeconomic factors previously reviewed in the literature section, as well as others related to China's reform process.

Among the bank-specific factors, corporate governance is as relevant as hard to measure, especially in the Chinese case. The lack of information on political intervention and government influence obliges us to use indirect measures.<sup>16</sup> The first one is the *type* of bank, captured by a dummy. Given the structure of the Chinese banking system, the type of bank (SOCBs, Policy Banks, JSCBs, CCBs and TICs) should give some idea of the degree of government influence (certainly larger in the first two groups). Other measures related to corporate governance could be obtained from the bank's balance sheet in as far as government intervention is reflected in the type of activity that a bank conducts. For example, state-owned banks (Policy Banks but also SOCBs) are known to be the major lenders of SOEs. Since there is not such a detailed breakdown of individual banks' balance sheets, we have to use rougher measures, related to aggregate lending or deposits. On the asset side, we include the rate of growth in lending [*loan growth*] and the share of loans as a percentage of total assets [*loans over assets*] in as far as the government can control the amount of lending through quotas and other means. On the liability side, we take the share of deposits to assets [*deposits over assets*] as a proxy of government intervention in as far as government-controlled banks are perceived as safer by depositors. As a robustness test, we also include each bank's *Financial Strength rating* from Moody's as a generally proxy of a bank's quality and, thereby, of its management.<sup>17</sup>

Second, the stylized facts point to the importance of asset quality which, again, is hard to account for accurately, especially in the Chinese case. We consider three alternative measures: the *flow of NPLs*, the *stock of NPLs* and the ratio of NPLs to total loans<sup>18</sup>. The first should be the preferred proxy in the steady-state; i.e., when the stock of NPLs had been reduced to standard levels, which is not yet the case of China. In the Chinese case, though, the flow of NPLs has experienced large swings, mainly due to the transfer of NPLs to the AMCs<sup>19</sup>. The stock of NPLs, thus, seems more relevant for our case, together with the ratio

---

14. Fu and Heffernan (2009) also make this point.

15. Results are available upon request.

16. Proxies, such as the share on loans to SOEs or to local governments are also not publicly available.

17. Results are available upon request.

18. In particular, to avoid that NPL ratio be fenced between 0 and 1, we build this alternative measure:  $\log[\text{NPL ratio}/(1-\text{NPL ratio})]$ .

19. A robustness test, we analyze the potential determinants of the flow of NPLs and confirms this a-priori since the only significant determinants are the recapitalization of banks and the transfer of NPLs to AMCs, i.e., the restructuring measures taken under the ongoing reform.

of NPLs to total loans, which is the target set out by the Chinese supervisory authorities as part of the ongoing reform. We shall, thus, focus on those two.<sup>20</sup>

For NPLs, we use problem loans, defined as substandard, doubtful and loss loans under the 5-tier classification system and overdue, bad and dead under the old 4-tier procedure.<sup>21</sup> This is because the Chinese accounting rules used for calculating NPLs differ among banks. SOCBs' NPLs have started following international accounting rules (5-tier loan classification system) while other banks are still under the old 4-tier loan classification scheme. As a robustness test, we run the regressions only with the observations for which there is a homogeneous definition of NPLs and the results are maintained.<sup>22</sup> This is the only definition available in the Bankscope database for a large enough number of banks. In addition, so as to reduce the number of missing observations, we add NPL data from Moody's.<sup>23</sup>

We account for bank capitalization in a very rough way, namely as equity over total assets [*equity over assets*] due to the lack of risk-weighted measures for a large number of banks. Bank efficiency is measured in terms of X-inefficiency [*rank of technical inefficiency*]. This basically means that the level of cost efficiency of a bank is determined by comparing its actual costs to the best-practise minimum costs to produce the same output under the same conditions. There are clear advantages in using X-inefficiency, as opposed to more simple measures of bank efficiency. A very popular one is the cost to income ratio, which is quite distorted in the Chinese as lending and deposit rates are not yet fully liberalized. Another popular indicator – the ratio of operating expenses over total assets – is actually a component of the ROA, so that including it as a regressor would create identification problems. Among the different methodologies to estimate the cost function to measure X-efficiency, we opt for a parametric approach based on a translog functional form as in Berger et al. (2009).<sup>24,25</sup>

**20.** The estimated determinants of the flow of NPLs are available upon request.

**21.** According to the five-tier classification system a substandard loan is when borrowers' abilities to service their loans are in question (borrowers cannot depend on their normal business revenues to pay back the principal and interest so losses may ensue, even when guarantees are invoked). Doubtful indicates that borrowers cannot pay back the principal and interest in full and significant losses will be incurred, even when guarantees are invoked. Loss means that the principal and interest of loans cannot be recovered or only a small portion can be recovered after taking all possible measures and resorting to necessary legal procedures. The old four tier classified NPLs into overdue (loans not repaid on maturity), bad (loans not repaid one year after maturity) and dead (loans unrecoverable). The major problem was that hides many problems of loan quality. For example, the assessment of loan quality according to the time of maturity allows borrowers to seek new loans to service old debts, thus turning NPLs into performing loans without actually lowering their risks.

**22.** Results are available upon request.

**23.** In particular, NPLs data for Agricultural Bank of China in 2001 and 2002.

**24.** Nonetheless, to avoid a potential bias derived to the inclusion of the X-efficiency measure as a regressor, we treat it as endogenous variable. In addition, for robustness, we run the regressions including alternative measures of efficiency: cost to income, operating expenses over assets and X-efficiency levels. The main findings hold.

**25.** In particular, we estimate the following cost function:

$$\begin{aligned} \ln(C/w_2z_1) = & \delta_0 + \delta_1 \ln(y_1/z_1) + \delta_2 \ln(y_2/z_1) + \delta_3 \ln(y_3/z_1) + \delta_4 \ln(y_4/z_1) \\ & + 1/2 \delta_{11} \ln(y_1/z_1) \ln(y_1/z_1) + 1/2 \delta_{22} \ln(y_2/z_1) \ln(y_2/z_1) + 1/2 \delta_{33} \ln(y_3/z_1) \ln(y_3/z_1) \\ & + 1/2 \delta_{44} \ln(y_4/z_1) \ln(y_4/z_1) + 1/2 \delta_{12} \ln(y_1/z_1) \ln(y_2/z_1) + 1/2 \delta_{13} \ln(y_1/z_1) \ln(y_3/z_1) \\ & + 1/2 \delta_{14} \ln(y_1/z_1) \ln(y_4/z_1) + 1/2 \delta_{23} \ln(y_2/z_1) \ln(y_3/z_1) + 1/2 \delta_{24} \ln(y_2/z_1) \ln(y_4/z_1) + 1/2 \delta_{34} \ln(y_3/z_1) \ln(y_4/z_1) \\ & + \beta_1 \ln(w_1/w_2) + 1/2 \beta_{11} \ln(w_1/w_2) \ln(w_1/w_2) + \theta_1 \ln(y_1/z_1) \ln(w_1/w_2) \\ & + \theta_2 \ln(y_2/z_1) \ln(w_1/w_2) + \theta_3 \ln(y_3/z_1) \ln(w_1/w_2) + \theta_4 \ln(y_4/z_1) \ln(w_1/w_2) \\ & + \text{year dummies} + \ln u_{it} + \ln v_{it} \end{aligned}$$

where C captures the bank's total costs. The output (y) variables are total loans, total deposits, liquid assets and other earning assets. The two input prices (w) variables are interest expenses to total deposits and non-interest expenses to fixed assets. The fixed input (z) is total earning assets. The u term is a factor that represents a bank's efficiency level

Market power is proxied in two ways: first as market share with the usual definition (each bank's total assets over those of the whole banking system [*market share on assets*]) and second, as *concentration*. For the latter, we opt for the Herfindahl-Hirschman index as it takes into account all banks and not only the largest ones. Furthermore, it also considers the inequality of market shares. This index is defined as the sum of the squared market shares of each bank's assets for a given year; it is slightly greater than 0 for a perfectly competitive market and equals 1 in the case of a monopoly.

The property structure is accounted for in three ways. We first introduce a different dummy for different Chinese banks, namely *SOCBs*, *JSCBs*, *CCBs*, *TICs* and *Policy Banks*. Second, the increasing role of privatization, and in particular diffused ownership, is assessed by including a dummy variable which takes the value of 1 when a bank is listed in the stock exchange [*listed*]. We also measure foreign ownership in a way which takes account the special characteristics of the Chinese banking system. In fact, while a bank is generally considered to be foreign-owned if at least 50% of the capital is in foreigners' hands, such dummy would never have the value of one in the Chinese case, which does not mean that foreign ownership cannot have an impact on profitability. We, thus, opt for a dummy which takes the value of 1 if there is a foreign participation in the bank's capital [*foreign capital*], independently of how large it is. The idea behind this is that foreign banks could still exert some influence in the way banks are run in as far as the control shareholders and managers are interested in learning from their foreign partners and/or give them a stake in the decision making process.

There are a number of institutional aspects specific to the Chinese case, which needs to be taken into account. One is the progress made in financial liberalization during the last few years. A particularly relevant aspect is the degree of interest rate liberalization. We, thus, include a variable that measures the maximum spread between loans and deposit rates according to existing regulations [*maximum spread*]. Other potentially important factor associated with the ongoing reform is the amount of NPLs which have been transferred from three of the SOCBs to AMCs for their disposal [*NPLs dispose of*]. Moreover, we include a dummy variable [*recapitalized*], which takes the value of one when a bank receives public funds either as capital or to reduce NPLs.

Finally, the macroeconomic variables considered are the *real interest rate on loans*, *real GDP growth* and *inflation*. These are drawn from official sources through the CEIC database.

---

and  $v$  is a random error. On the basis of the above formula, we calculate an efficiency rank ordering of each bank in each year. Such rank ordering is, then, converted into an ascending scale over [0, 1], where 0 represents the most cost efficient bank each year.

## 6 Results

We investigate empirically which are the determinants of bank profitability in China with annual panel data for a maximum of 87 banks during the period 1997 to 2004. We explore two complementary measures of bank profitability: pre-provision profits (Table 2) and ROA (Table 3).

The advantages of measuring profitability in terms of pre-provision profit for the Chinese case are twofold. First, it limits the problem of the non homogeneous data for provisioning across Chinese banks as well as the ad-hoc and government-directed provisioning that several large banks have conducted. Second, asset quality is only partially accounted for or, at least, to the extent that provisioning is related to asset quality. Admittedly, the case of China is less than elsewhere as provisioning is not highly correlated with asset quality and, in particular, with NPLs (see Table A-4).

Exploring the determinants of ROA, though, is still interesting for two reasons: First, it is a more comprehensive measure of profitability and, second, it is widely used in the literature, which allows comparison with previous studies on China or other countries.

Given the relevance of poor asset quality in understanding the situation of Chinese banks and the scarcity of NPL data – the most often used proxy for asset quality – we carry out a preliminary exercise: we estimate the determinants of NPLs for those banks and years where data is available and include the significant ones as additional regressors in the equation explaining bank profitability.

We, thus, look for the determinants of NPLs borrowing from the existing literature<sup>26</sup> and China's special characteristics. We run two different models: one for the ratio of NPLs to total loans and another for the stock of NPLs. For each model, we have two specifications: one including macroeconomic controls and another with time dummies instead, given our sample short time span (left and right columns, respectively). In addition two regressions are shown for each specification: one for the full set of regressors (columns 1 and 3) and another with the restricted set based on a Wald test of individual and joint insignificance (columns 2 and 4).

The results for the stock and the ratio of NPLs are quite similar (see Table A-5 and Table A-6). First, low X-efficiency has a positive and significant influence on both measures of asset quality. Second, while a larger market share is associated to a higher NPL ratio, a higher concentration in the banking system increases the stock of NPLs. Third, listed banks (i.e., part of the ownership is private) tend to have a lower stock and NPL ratio. Instead, no such evidence can be found for foreign ownership, at least not in the way it is measured (through a dummy variable). An obvious result, given the massive transfer of NPLs to AMC's, is the significant and negative impact of such transfer on the ratio and the stock of NPLs. Finally, the volatility of interest rates contributes to raising the ratio and the stock of NPLs, while higher growth is found significant in reducing the ratio of NPLs but not necessarily the stock. This seems to indicate that economic growth fosters new lending and therefore washes out the asset quality problems, when measured in terms of an

---

26. See Salas and Saurina (2002).

NPL ratio, as the Chinese authorities' target. As before, the results are basically maintained when introducing time dummies instead of macroeconomic variables.

We now move to estimating the pre-provision profit and the ROA but introducing, as additional regressors, the determinants of NPLs, which were significant in the previous regressions. The results are shown in Table 2 below and follow the same structure as before (one specification with macroeconomic controls and one with time dummies instead and, for each, one with the full set of regressors and another with the restricted set).

Starting with the pre-provision profit, a higher equity to assets ratio is found significant in increasing the pre-provision profit in all model specifications. This result is similar to others found for emerging economies since the degree of bank capitalization may be a concern for investors or depositors. A larger share of deposits to assets also seems to boost the pre-provision profit. This is consistent with the idea that deposits in China are the cheapest liability from the bank's perspective, especially in a context of not fully liberalized interest rates. In this context, it is interesting to note that government-controlled banks are also those with a higher deposit to asset ratio, as one would expect given their implicit government guarantee. Another expected result is that X-inefficiency lowers the pre-provision profit in a statistically significant way.

An interesting result is found for bank concentration. A more concentrated banking system is associated with a lower pre-provision profit. In the Chinese case, the degree of concentration is very much related to the weight of the four SOCBs in the banking system so that a reduction of their share in the total bank assets seems to bode well for profitability. Interestingly, this result is true beyond the massive provisioning policies that these banks have been conducting. This is not the first paper which finds such a negative impact of Chinese largest banks (i.e., the SOCBs) on overall bank performance as we reviewed in the Section 2.

Another result pointing to the importance of government intervention in determining bank profitability – through the ownership structure and/or corporate governance – is the negative and significant dummy for Policy Banks. A mirror finding is the positive and significant coefficient for the dummies representing JSCBs and, to some extent, the TICs although this is now a highly heterogeneous group.<sup>27</sup> Finally, the fact that a bank is listed or whether it has foreign ownership does not seem to matter for the pre-provision profit.<sup>28</sup> There may be other reasons for these results, other than the irrelevance of private/foreign ownership: one is that the dummies distinguishing across types of bank, as well as other balance sheet characteristics may have already captured that information. The other is that the way in which private and foreign ownership is measured – through a dummy independently on the degree of private/foreign ownership – may not be accurate enough. In this line, García-Herrero and Santabárbara (2008) use more precise measures of foreign ownership (such as the actual percentage over total capital) and find that foreign ownership does foster profitability.

Another finding is the persistence of the pre-provision profits, marked by the very significant and also large coefficient of the lagged dependent variable. As pointed, the existing literature considers the persistence of profitability as a signal of barriers to competition

---

**27.** The very positive finding for TICs may be influenced by sample selection in as far as only large TICs are included in the Bankscope database.

**28.** It should also be noted that potential reverse causality between profitability and the ownership structure is accounted for since both variables (listed and foreign capital) are instrumented under the GMM estimation.

(the more so if the parameter approaches one). Our estimated parameter is statistically different from one but still quite large. Apart from the lack of competition, the persistence of the pre-provision profit could again reflect a high degree of government intervention. This is because banks are given yearly targets for asset quality and capitalization so that they cannot really change their business models, even if opportunities arise.

Finally, from the macroeconomic variables included, higher real interest rates on loans and inflation appear to foster profitability while the volatility of interest rates reduces it. The latter results, however, should be treated with great care given the very small number of informative observations to estimate macroeconomic variables. The findings for the bank-specific variables, however, are not influenced by the inclusion of such macroeconomic variables, as they are maintained in the regressions with time dummies.

**Table 2. Results for pre-provision profit over assets**

	(1)	(2)	(3)	(4)
	<i>Macroeconomic approach</i>		<i>Yearly Dummies approach <sup>(1)</sup></i>	
<b>Dependent variable:</b>	<b>Jointly non-significant</b>		<b>Jointly non-significant</b>	
<b>log Pre-Provision Profit over Assets</b>				
<i>Loan growth</i>	-0.312*	-0.253*	-0.331**	-0.255*
	(0.060)	(0.078)	(0.049)	(0.092)
<i>Log Loans over Assets</i>	0.046		0.046	
	(0.622)		(0.612)	
<i>Log Deposits over Assets</i>	0.086	0.110**	0.080	0.103**
	(0.138)	(0.029)	(0.177)	(0.039)
<i>Log Equity over Assets</i>	0.190	0.186*	0.198*	0.197**
	(0.115)	(0.071)	(0.097)	(0.037)
<i>Rank Technical Inefficiency</i>	-0.432**	-0.721***	-0.411**	-0.704***
	(0.039)	(0.001)	(0.037)	(0.001)
<i>Foreign Capital</i>	-0.094		-0.123	
	(0.475)		(0.367)	
<i>Listed</i>	0.093		0.101	
	(0.505)		(0.478)	
<i>Recapitalized</i>	-0.215		-0.170	
	(0.417)		(0.502)	
<i>Market Share on Assets</i>	-3.688		-3.531	
	(0.299)		(0.306)	
<i>Concentration (Herfindahl index)</i>	-6.250	-4.774***		
	(0.114)	(0.003)		
<i>Real Interest on Loans</i>	18.503**	20.177**		
	(0.045)	(0.028)		
<i>Maximum Spread</i>	-8.536			
	(0.432)			
<i>Real GDP Growth</i>	-7.129			
	(0.662)			
<i>Inflation</i>	18.584*	16.886*		
	(0.050)	(0.066)		
<i>Volatility of Interest Rates</i>	-0.122***	-0.095**		
	(0.008)	(0.012)		
<i>SOCBs</i>	0.645		0.626	
	(0.308)		(0.298)	
<i>JSCBs</i>	0.234	0.156**	0.251	0.161**
	(0.324)	(0.036)	(0.280)	(0.030)
<i>TICs</i>	0.327*	0.396**	0.297	0.364**
	(0.098)	(0.020)	(0.152)	(0.040)
<i>CCBs</i>	0.061		0.074	
	(0.774)		(0.722)	
<i>Policy Banks</i>	-0.562*	-0.777***	-0.529*	-0.761***
	(0.094)	(0.002)	(0.087)	(0.002)
<i>Lag log Pre-Provision Profit over Assets</i>	0.478***	0.398***	0.500***	0.411***
	(0.000)	(0.003)	(0.000)	(0.003)
<i>Constant</i>	-0.926	-2.452**	-0.993*	-1.308*
	(0.723)	(0.018)	(0.096)	(0.051)
<i>Observations</i>	218	218	218	218
<i>Number of groups</i>	56	56	56	56
<i>Hansen test</i>	(1.000)	(1.000)	(1.000)	(0.995)
<i>Arellano-Bond test for AR(1) in first differences</i>	(0.001)	(0.001)	(0.000)	(0.001)
<i>Arellano-Bond test for AR(2) in first differences</i>	(0.734)	(0.852)	(0.707)	(0.994)

Robust p values in parentheses

\* significant at 10%; \*\* significant at 5%; \*\*\* significant at 1%

Variables in italics are instrumented through the GMM procedure following Arellano and Bover (1995)

<sup>(1)</sup>Year dummies not reported

We now investigate the determinants of the ROA. The results are very similar to those found for the pre-provision profit (Table 3). Banks with higher equity to assets and a relatively larger share of deposits tend to have a higher ROA. In turn, bank inefficiency and a higher market share tend to reduce the ROA. As before, JSCBs and TICs tend to have a higher ROA. The opposite is true for Policy Banks. As for the pre-provision profit, the ROA is found to be persistent and higher real interest rates and inflation tend to raise the ROA while the volatility of interest rates reduces it.

**Table 3. Results for pre-tax ROA**

	(1)	(2)	(3)	(4)
	<i>Macroeconomic approach</i>		<i>Yearly Dummies approach</i> <sup>(1)</sup>	
<b>Dependent variable:</b>		Jointly non-significant		Jointly non-significant
<b>log pre-tax ROA</b>				
<i>Loan Growth</i>	-0.406** (0.046)	-0.357* (0.075)	-0.397* (0.055)	-0.371* (0.076)
<i>Log Loans over Assets</i>	0.095 (0.380)		0.084 (0.415)	
<i>Log Deposits over Assets</i>	0.154** (0.013)	0.155*** (0.005)	0.152** (0.015)	0.164*** (0.003)
<i>Log Equity over Assets</i>	0.226** (0.031)	0.234** (0.026)	0.227** (0.023)	0.256*** (0.007)
<i>Rank Technical Inefficiency</i>	-0.424** (0.049)	-0.548** (0.026)	-0.387* (0.060)	-0.406** (0.015)
<i>Foreign Capital</i>	0.023 (0.845)		0.000 (0.999)	
<i>Listed</i>	0.059 (0.748)		0.049 (0.786)	
<i>Recapitalized</i>	0.212 (0.205)		0.250 (0.138)	
<i>Market Share on Assets</i>	-7.943** (0.038)	-2.987** (0.032)	-7.958** (0.038)	-2.899** (0.032)
<i>Concentration (Herfindahl index)</i>	-0.733 (0.846)			
<i>Real Interest on Loans</i>	18.398* (0.064)	15.868** (0.038)		
<i>Maximum Spread</i>	-0.583 (0.964)			
<i>Real GDP Growth</i>	3.370 (0.852)			
<i>Inflation</i>	17.791* (0.068)	17.373** (0.033)		
<i>Volatility of Interest Rates</i>	-0.094* (0.051)	-0.061* (0.061)		
<i>SOCBs</i>	0.935 (0.159)		0.956 (0.142)	
<i>JSCBs</i>	0.154 (0.554)		0.189 (0.465)	0.194** (0.026)
<i>TICs</i>	0.546** (0.024)	0.455** (0.033)	0.540** (0.029)	0.476** (0.018)
<i>CCBs</i>	-0.089 (0.684)		-0.068 (0.762)	
<i>Policy Banks</i>	-0.414 (0.244)	-0.548*** (0.003)	-0.378 (0.269)	-0.454*** (0.009)
<i>Lag log Pretax ROA</i>	0.378*** (0.003)	0.358*** (0.002)	0.384*** (0.002)	0.340*** (0.002)
<i>Constant</i>	-3.305 (0.257)	-3.048*** (0.006)	-1.353** (0.034)	-1.570** (0.017)
Observations	216	216	216	216
Number of groups	56	56	56	56
Hansen test	(1.000)	(1.000)	(1.000)	(1.000)
Arellano-Bond test for AR(1) in first differences	(0.001)	(0.003)	(0.002)	(0.003)
Arellano-Bond test for AR(2) in first differences	(0.174)	(0.188)	(0.167)	(0.208)

Robust p values in parentheses

\* significant at 10%; \*\* significant at 5%; \*\*\* significant at 1%

Variables in italics are instrumented through the GMM procedure following Arellano and Bover (1995)

<sup>(1)</sup> Year dummies not reported

Finally, as a robustness check, we include the ratio of NPLs directly in the equation explaining the ROA. While the number of observations is considerably reduced, some of our findings hold. In particular, better capitalized banks are more profitable, and profitability is still very persistent. Inflation and too high and volatile interest rates also reduce the ROA (see Table A-7).

## 7 Conclusions

In the context of the ongoing bank reform in China, this paper analyzes empirically what are the main determinants of profitability for Chinese banks. We use a panel data set for 87 banks from 1997 to 2004. We measure profitability in two ways: the pre-provision profit and the ROA.

Given the scarcity and drawbacks of NPL data – a potentially important determinant of profitability –, we carry out a preliminary exercise. Namely, we estimate the determinants of NPLs for those banks and years for which data is available and include the significant ones as additional regressors in the equation explaining bank profitability. In particular, low X-efficiency of banks, a big market share, higher concentration are all associated with more NPLs. Listed banks, in turn, tend to have better asset quality. Finally, low economic growth and high and volatile interest rates are associated with more NPLs.

We then, estimate the determinants of profitability and find a number of results which are quite robust across different definitions of profitability (the pre-provision profit or the ROA) and specifications. Better capitalized banks tend to be more profitable. The same is true for banks with a relatively larger share of deposits and for more X-efficient banks. An interesting finding is that a less concentrated banking system increases bank profitability, which basically reflects that SOCBs have been the main drag for system's profitability. The negative and significant coefficient of the dummy for Policy Banks puts them in the same side as SOCBs, suggesting that government intervention does not bode well for profitability. Another piece of evidence in the same direction is the positive and significant coefficient for the dummies representing JSCBs and TICs. From the macroeconomic variables included, higher real interest rates on loans and inflation appear to foster profitability while the volatility of interest rates reduces it.

Finally, profitability seems to be quite persistent in China, which probably signals barriers to competition but also a high degree of government intervention as banks are given yearly targets for asset quality and capitalization. This again shows how much profitability is influenced by government decisions.

These findings should not come as a surprise for a banking system which has long been functioning as a mechanism for transferring huge savings to meet public policy goals. In fact, the government's development strategy has implied using the banking system to keep inefficient SOEs afloat among other public goals such as massive infrastructure investment. The ongoing reform will need to ensure that government intervention in the banking system is reduced by lowering the share of government ownership, improving the corporate culture and fully liberalizing the financial system. This is especially relevant as profitability will be more sought after as Chinese banks become more market-oriented and face stronger competition.



## REFERENCES

- ANGBAZO, L. (1997). "Commercial bank net interest margins, default risk, interest-rate risk, and off-balance sheet banking", *Journal of Banking & Finance*, 21, pp. 55-87.
- ARELLANO, M., and O. BOVER (1995). "Another look at the instrumental-variable estimation of error-components models", *Journal of Econometrics*, 68, pp. 29-52.
- BARTH, J. R., G. CAPRIO JR. and R. LEVINE (2004). "Bank supervision and regulation: What works best?", *Journal of Financial Intermediation*, 13, pp. 205--248.
- BERGER, A. N. (1995). "The profit-structure relationship in banking-tests of market-power and efficient-structure hypotheses", *Journal of Money, Credit and Banking*, 27, pp. 404-431.
- BERGER, A. N., S. D. BONIME, D. M. COVITZ and D. HANCOCK (2000). "Why are profits so persistent? The roles of product market competition, information opacity and regional macroeconomic shocks", *Journal of Banking & Finance*, 24, pp. 1203-1235.
- BERGER, A. N., I. HASAN and M. ZHOU (2009). "Bank ownership and efficiency in China: What will happen in the world's largest nation?", *Journal of Banking & Finance*, 33, pp. 113-130.
- BERGER A. N., and L. J. MESTER (1999). *What explains the dramatic changes in cost and profit performance of the U.S. banking industry?*, Center for Financial Institutions Working Papers from Wharton School Center for Financial Institutions, University of Pennsylvania.
- BOURKE, P. (1989). "Concentration and other determinants of bank profitability in Europe, North America and Australia", *Journal of Banking and Finance*, 13, pp. 65-79.
- BOYD, J. H., R. LEVINE and B. D. SMITH (2001). "The impact of inflation on financial sector performance", *Journal of Monetary Economics*, 47, pp. 221-228.
- BROCK, P. L., and L. ROJAS-SUÁREZ (2000). "Understanding the behaviour of bank spreads in Latin America", *Journal of Development Economics*, 63, pp. 113-134.
- CHEN, Z., D. LI and F. MOSHIRIAN (2005). "China's financial services industry: The intra-industry effects of privatization of the bank of China Hong Kong", *Journal of Banking & Finance*, 29, pp. 2291-2324.
- CLAEYS, S., and R. VANDER VENNET (2005). *Determinants of bank interest margins in Central and Eastern Europe: A comparison with the West*, Working Paper, Ghent University, mimeo.
- DEMIRGÜÇ-KUNT, A., and H. HUIZINGA (1999). *Determinants of commercial bank interest margins and profitability: Some international evidence*, World Bank Policy Research Working Paper No. 1900.
- DEYOUNG, R., and T. RICE (2004). "Non interest income and financial performance at U.S. commercial banks", *The Financial Review*, 39, pp. 101-127.
- FERRI, G. (2009). "Are new tigers supplanting old mammoths in China's banking system? Evidence from a sample of city commercial banks", *Journal of Banking & Finance*, 33, pp. 131-140.
- FRY, M. (1994). *Money, Interest and Banking in Economic Development*, 2<sup>nd</sup> edition, The Johns Hopkins University Press, Baltimore and London.
- FU, X., and S. HEFFERNAN. (2009). "The effects of reform on China's bank structure and performance", *Journal of Banking & Finance*, Elsevier, 33, pp. 39-52.
- GARCÍA-HERRERO, A., S. GAVILÁ and D. SANTABÁRBARA (2006). "China's banking reform: an assessment of its evolution and possible impact", *CESifo Economic Studies*, 52, pp. 304-363.
- GARCÍA-HERRERO, A., and D. SANTABÁRBARA (2008). *Does the Chinese banking system benefit from foreign investors?*, BOFIT Discussion Paper 11/2008.
- GARCÍA-HERRERO, A., and F. VÁZQUEZ (2007). *International diversification gains and home bias in banking*, IMF Working Paper No. WP/07/281.
- GODDARD, J., P. MOLYNEUX and J. WILSON (2004). "Dynamics of growth and profitability in banking", *Journal of Money, Credit and Banking*, 36, pp. 1069-1090.
- HANSON, J., and R. ROCHA (1986). *High interest rates, spreads and the cost of intermediation: Two studies*, World Bank Industry and Finance Series 18.
- HO, T. S. Y., and A. SAUNDERS (1981). "The determinants of bank interest margins: Theory and empirical evidence", *The Journal of Financial and Quantitative Analysis*, 16, pp. 581-600.
- INTERNATIONAL MONETARY FUND (2000). *International Capital Markets: Developments, Prospects, and Key Issues*, IMF, Washington, DC.
- JIA, C. (2009). "The effect of ownership on the prudential behaviour of banks - The case of China", *Journal of Banking & Finance*, 33, pp. 77-87.
- LA PORTA, R., F. LÓPEZ-DE-SILANES and A. SHLEIFER (2002). "Government ownership of banks", *Journal of Finance*, 57, pp. 265-301.
- LIN, X., and Y. ZHANG (2009). "Bank ownership reform and bank performance in China", *Journal of Banking & Finance*, 33, pp. 20-29.
- MARTÍNEZ-PERIA, M. S., and S. SCHMUKLER (1998). *Do depositors punish banks for bad behaviour? Market discipline in Argentina, Chile and Mexico*, World Bank Paper 2058.
- MAUDOS, J., and J. FERNÁNDEZ DE GUEVARA (2004). "Factors explaining the interest margin in the banking sectors of the European Union", *Journal of Banking & Finance*, 28, pp. 2259-2281.
- MUELLER, D. (1977). "The persistence of profits above the norm", *Economica*, 44, pp. 369-380.
- SALAS, V., and J. SAURINA (2002). "Credit risk in two institutional regimes: Spanish commercial and savings banks", *Journal of Financial Services Research*, 22, 99-107.
- STIROH, K. J., and A. RUMBLE (2006). "The dark side of diversification: The case of US financial holding companies", *Journal of Banking & Finance*, 30, pp. 2131-2161.

YAO, S., and C. JIANG (2007). *The effects of governance changes on bank efficiency in China: A stochastic distance function approach*, Available at SSRN: <http://ssrn.com/abstract=980935>.

## Appendix

**Table A - 1. Data sources**

Variable	Definition	Type	Units	Source
ROA	Return on average assets before taxes	Bank Specific	Ratio	Bankscope
ROE	Return on average equity before taxes	Bank Specific	Ratio	Bankscope
Pre-Provision Profit over Assets	Operating income minus operating expenses over assets	Bank Specific	Ratio	Bankscope
NPL ratio	Problem loans over total loans	Bank Specific	Ratio	Bankscope
Stock of NPLs	Stock of problem loans	Bank Specific	CNY Millions	Bankscope
Flow of NPLs	Flow of problem loans (as difference of stocks)	Bank Specific	CNY Millions	Bankscope
Loans	Total loans	Bank Specific	CNY Millions	Bankscope
Loan Growth	Total loans, annual growth rate	Bank Specific		Bankscope
Loans over Assets	Total loans over total assets	Bank Specific	Ratio	Bankscope
Deposits over Assets	Total deposits over assets	Bank Specific	Ratio	Bankscope
Equity over Assets	Value of equity over total assets	Bank Specific	Ratio	Bankscope
Rank Technical Inefficiency	Rank of technical inefficiency in uniform scale over [0,1] (0 best-1 worst)	Bank Specific	Index	
Foreign Capital	1 if a bank has foreign ownership at the end of the year; 0 otherwise	Bank Specific	Dummy	García-Herrero et al. (2006)
Listed	1 if a bank has been listed at the end of the year; 0 otherwise	Bank Specific	Dummy	García-Herrero et al. (2006)
Recapitalized	1 if a bank has been recapitalized by the government; 0 otherwise	Bank Specific	Dummy	García-Herrero et al. (2006)
NPLs Dispose of	NPLs transferred to AMCs	Bank Specific	CNY Millions	García-Herrero et al. (2006)
Financial Strength Rating	Financial Strength Rating (1 worst-12 best)	Bank Specific	Index	Moody's
Market Share on Assets	Each bank total assets over banking system total assets	Bank Specific	Ratio	Bankscope, CEIC
Concentration (Herfindahl index)	Sum of the squared market shares of each bank assets	Macroeconomic	Index	Bankscope
Real GDP Growth	Real GDP, annual growth rate	Macroeconomic		CEIC
Inflation	CPI annual inflation rate	Macroeconomic		CEIC
Real Interest on Loans	One year real reference interest rate on loans	Macroeconomic		CEIC
Maximum Spread between Loan and Deposit rates	Maximum spread between interest rate on loans and interest rate on deposits	Macroeconomic		CEIC, García-Herrero et al. (2006)
Volatility of Interest Rates	Standard deviation of monthly average of interbank offered interest rate (7 day)	Macroeconomic		CEIC
System Credit Growth	Banking system credit growth	Macroeconomic		CEIC

**Table A - 2. Descriptive statistics**

Name	Obs.	Mean	Sd.				Perc. 99%	Max
			Deviation	Min	Perc. 1%	Perc. 99%		
ROA	368	0.01	0.01	-0.01	-0.01	0.05	0.07	
ROE	368	0.09	0.08	-0.20	-0.07	0.37	0.50	
Pre-Provision Profit over Assets	368	0.01	0.01	-0.01	0.00	0.06	0.11	
NPL ratio	200	0.20	0.37	0.00	0.00	2.38	3.66	
Stock of NPLs	200	54729	167259	0.4	0.5	776398	831725	
Flow of NPLs	152	-5374	30528	-242198.5	-195917.2	24399	26078	
Loans	371	213042	546346	1.2	1.7	2688877	3705274	
Loan Growth	308	0.33	1.89	-0.98	-0.55	2.60	32.54	
Loans over Assets	371	0.50	0.18	0.00	0.01	0.96	0.98	
Deposits over Assets	359	0.73	0.24	0.00	0.00	0.95	0.97	
Equity over Assets	371	0.13	0.19	0.01	0.01	0.96	0.98	
Rank technical inefficiency	268	0.50	0.30	0	0	1	1	
Foreign Capital	371	0.05	0.23	0	0	1	1	
Listed	371	0.06	0.25	0	0	1	1	
Recapitalized	371	0.01	0.12	0	0	1	1	
NPLs Dispose of	371	4512	37786	0	0	267400	407700	
Financial Strength Rating	131	2.89	1.21	1	1	5	5	
Market Share on Assets	371	0.02	0.05	0.00	0.00	0.22	0.26	
Concentration (Herfindahl index)	371	0.14	0.03	0.09	0.09	0.17	0.17	
Real Interest on Loans	371	0.05	0.02	0.01	0.01	0.08	0.08	
Maximum Spread between Loan and Deposit rates	371	0.05	0.01	0.03	0.03	0.07	0.07	
Real GDP Growth	371	0.08	0.01	0.07	0.07	0.10	0.10	
Inflation	371	0.01	0.02	-0.01	-0.01	0.04	0.04	
Volatility of Interest Rates	371	0.44	0.48	0.07	0.07	1.53	1.53	
System Credit Growth	371	0.15	0.05	0.06	0.06	0.23	0.23	

**Table A - 3. Balance Sheet and Income Statement**

<b>BALANCE SHEET</b>								
CNY bn	1997	1998	1999	2000	2001	2002	2003	2004
<b>Assets</b>								
Loans	5729	6410	6855	9827	10100	11800	13900	14400
Other Earning Assets	2687	2962	3526	5693	5982	6821	7819	8349
Total Earning Assets	8416	9372	10382	15519	16082	18621	21719	22749
Total Assets	9041	10200	11200	16800	17300	19600	22800	23600
<b>Liabilities &amp; Equity</b>								
Deposits & Short term Funding	7546	8341	9089	14000	14400	17400	20000	20900
Other Funding	506	633	767	881	958	189	202	291
Other (Non Interest bearing)	551	551	720	922	953	903	1447	1446
Total Liabilities	8603	9525	10576	15803	16311	18492	21649	22638
Equity	410	610	636	922	881	858	979	893
<b>INCOME STATEMENT</b>								
CNY bn	1997	1998	1999	2000	2001	2002	2003	2004
Net Interest Revenue	172	186	188	287	301	335	419	476
Other Operating Income	61	50	44	53	60	86	98	69
Total Operating Income	233	236	232	340	361	421	518	544
Total Operating Expenses	133	152	144	196	197	254	291	274
Pre-provision Profit	100	83	87	144	163	167	226	271
Loan Loss Provisions	19	25	31	58	85	83	87	110
Profit before Taxes	81	59	56	85	78	84	139	161
Taxes	42	36	35	50	41	40	59	67
Net Income	40	22	21	36	38	44	81	94
Number of banks	40	38	41	46	41	53	68	53

**Table A - 4. NPLs cross correlation**

	Loan Loss Reserve (Stock)	Loan Provisions (Flow)	Flow of NPLs	Flow of NPLs (-1)	Stock of NPLs	Stock of NPLs (-1)
Loan Loss Reserve (Stock)	1					
Loan Provisions (Flow)	0.49	1				
Flow of NPLs	-0.47	-0.44	1			
Flow of NPLs (-1)	-0.33	-0.41	0.20	1		
Stock of NPLs	0.43	0.81	-0.26	-0.31	1	
Stock of NPLs (-1)	0.49	0.84	-0.42	-0.33	0.99	1

**Table A - 5. Results for NPL ratio**

Dependent variable: <b>log (NPL ratio/1-NPL ratio)</b>	(1)	(2)	(3)	(4)
	<b>Macroeconomic approach</b>		<b>Yearly Dummies approach <sup>(1)</sup></b>	
	Jointly non-significant		Jointly non-significant	
Loan Growth (-1)	-0.211 (0.234)		-0.194 (0.296)	
<i>Log Loans over Assets</i>	-0.018 (0.974)		-0.043 (0.939)	
<i>Log Equity over Assets (-1)</i>	0.177 (0.324)		0.177 (0.327)	
<i>Rank technical inefficiency</i>	0.264 (0.425)	0.688** (0.027)	0.307 (0.350)	0.526 (0.138)
<i>Foreign Capital</i>	0.053 (0.730)		0.043 (0.781)	
<i>Listed</i>	-0.305 (0.101)	-0.554** (0.010)	-0.302 (0.109)	-0.580** (0.015)
<i>Recapitalized</i>	-0.682* (0.095)	-0.642* (0.089)	-0.711* (0.085)	-0.673* (0.072)
<i>Log NPLs Dispose of</i>	-0.049*** (0.007)	-0.047*** (0.001)	-0.051*** (0.004)	-0.056*** (0.002)
<i>Market Share on Assets</i>	3.487 (0.192)	1.864*** (0.007)	3.023 (0.249)	2.166*** (0.001)
<i>Concentration (Herfindahl Index)</i>	1.757 (0.742)			
Real Interest on Loans	-2.255 (0.864)			
Maximum spread	6.178 (0.719)			
Real GDP Growth	-13.864 (0.565)	-27.383*** (0.000)		
Inflation	-3.137 (0.838)			
Volatility of Interest Rates	0.143* (0.052)	0.119*** (0.003)		
SOCBs	-0.130 (0.799)		-0.056 (0.912)	
JSCBs	0.157 (0.395)		0.171 (0.365)	
TICs	0.893** (0.048)	0.230 (0.759)	0.916** (0.047)	0.220 (0.779)
<i>Lag log (NPL ratio/1-NPL ratio)</i>	0.694*** (0.000)	0.638*** (0.000)	0.700*** (0.000)	0.657*** (0.000)
Constant	0.503 (0.888)	1.290*** (0.000)	-0.212 (0.806)	-0.616 (0.150)
Observations	115	144	115	144
Number of groups	32	41	32	41
Hansen test	(1.000)	(0.995)	(1.000)	(0.997)
Arellano-Bond test for AR(1) in first differences	(0.048)	(0.009)	(0.047)	(0.030)
Arellano-Bond test for AR(2) in first differences	(0.038)	(0.066)	(0.036)	(0.046)

Robust p values in parentheses

\* significant at 10%; \*\* significant at 5%; \*\*\* significant at 1%

Variables in italics are instrumented through the GMM procedure following Arellano and Bover (1995)

<sup>(1)</sup> Year dummies not reported

**Table A - 6 Results for Stock of NPLs**

	(1)	(2)	(3)	(4)
	<i>Macroeconomic approach</i>		<i>Yearly Dummies approach <sup>(1)</sup></i>	
<b>Dependent variable:</b>		Jointly non-significant		Jointly non-significant
<b>log Stock of NPLs</b>				
<i>Log Loans</i>	0.310** (0.021)	0.344*** (0.000)	0.309** (0.022)	0.360*** (0.001)
<i>Loan Growth</i>	-0.078 (0.770)		-0.079 (0.768)	
<i>Loan Growth (-1)</i>	-0.154 (0.345)		-0.151 (0.357)	
<i>Log Loans over Assets</i>	0.285 (0.523)		0.266 (0.548)	
<i>Log Equity over Assets (-1)</i>	0.212 (0.173)		0.218 (0.170)	
<i>Rank Technical Inefficiency</i>	0.241 (0.382)	0.545* (0.062)	0.261 (0.356)	0.597** (0.044)
<i>Foreign Capital</i>	0.029 (0.806)		0.022 (0.854)	
<i>Listed</i>	-0.216 (0.111)	-0.380* (0.073)	-0.206 (0.124)	-0.390* (0.051)
<i>Recapitalized</i>	-0.616 (0.115)	-0.726 (0.102)	-0.635 (0.112)	-0.685 (0.123)
<i>Log NPLs Dispose of</i>	-0.044*** (0.003)	-0.052*** (0.002)	-0.045*** (0.002)	-0.055*** (0.004)
<i>Market Share on Assets</i>	0.818 (0.742)		0.698 (0.776)	
<i>Concentration (Herfindahl index)</i>	5.070 (0.151)	7.564*** (0.000)		147.001 (0.116)
<i>Real Interest on Loans</i>	-17.866* (0.092)			
<i>Volatility of Interest Rates</i>	0.114* (0.080)	0.090*** (0.005)		
<i>Inflation</i>	-19.256 (0.105)			
<i>Real GDP Growth</i>	-4.963 (0.734)			
<i>System Credit Growth</i>	-0.813 (0.409)			
<i>SOCBs</i>	-0.002 (0.997)		0.032 (0.947)	
<i>JSCBs</i>	0.100 (0.534)		0.108 (0.505)	
<i>TICs</i>	0.522 (0.177)	-0.144 (0.803)	0.517 (0.189)	-0.137 (0.813)
<i>Lag log Stock of NPLs</i>	0.709*** (0.000)	0.707*** (0.000)	0.708*** (0.000)	0.693*** (0.000)
<i>Constant</i>	0.974 (0.546)	-2.229*** (0.001)	0.053 (0.948)	-26.285* (0.096)
Observations	115	144	115	144
Number of groups	32	41	32	41
Hansen test	(1.000)	(1.000)	(1.000)	(0.996)
Arellano-Bond test for AR(1) in first differences	(0.021)	(0.009)	(0.020)	(0.013)
Arellano-Bond test for AR(2) in first differences	(0.384)	(0.138)	(0.396)	(0.124)

Robust p values in parentheses

\* significant at 10%; \*\* significant at 5%; \*\*\* significant at 1%

Variables in italics are instrumented through the GMM procedure following Arellano and Bover (1995)

<sup>(1)</sup> Year dummies not reported

**Table A - 7 Results for ROA (Including NPLs)**

	(1)	(2)	(3)	(4)
	<i>Macroeconomic approach</i>		<i>Yearly Dummies approach</i> <sup>(1)</sup>	
<b>Dependent variable:</b>		Jointly non-significant		Jointly non-significant
<b>log pre-tax ROA</b>				
<i>Loan Growth</i>	-0.228** (0.031)	-0.166 (0.134)	-0.227** (0.045)	-0.220* (0.072)
<i>Log Loans over Assets</i>	-0.204 (0.189)	-0.099 (0.537)	-0.214 (0.152)	-0.109 (0.543)
<i>Log Deposits over Assets</i>	-0.082 (0.233)		-0.086 (0.209)	
<i>Log Equity over Assets</i>	0.047 (0.654)	0.156* (0.051)	0.049 (0.610)	0.188** (0.047)
<i>Log Non-Performing loans over assets</i>	-0.081 (0.140)	-0.054 (0.199)	-0.083 (0.125)	-0.080* (0.064)
<i>Rank technical inefficiency</i>	0.005 (0.975)		0.008 (0.953)	
<i>Foreign Capital</i>	0.021 (0.826)		0.014 (0.886)	
<i>Listed</i>	0.125 (0.216)		0.118 (0.193)	
Recapitalized	1.072*** (0.000)	1.059*** (0.000)	1.057*** (0.000)	1.015*** (0.000)
<i>Market Share on Assets</i>	-3.557* (0.074)	-4.693** (0.045)	-3.642* (0.074)	-5.959** (0.028)
<i>Concentration (Herfindahl index)</i>	-2.123 (0.566)			
Real Interest on Loans	15.755 (0.110)	15.795** (0.016)		
Maximum spread	-13.519 (0.199)			
Real GDP Growth	-14.829 (0.423)			
Inflation	23.436** (0.016)	16.144** (0.019)		
Volatility of Interest Rates	-0.126*** (0.000)	-0.092*** (0.005)		
SOCBs	0.430 (0.167)	0.549 (0.112)	0.446 (0.164)	0.828* (0.050)
JSCBs	0.022 (0.802)		0.032 (0.684)	0.131 (0.120)
TICs	-0.006 (0.985)		-0.028 (0.933)	
<i>Lag log Pretax ROA</i>	0.614*** (0.000)	0.612*** (0.000)	0.606*** (0.000)	0.607*** (0.000)
Constant	-1.044 (0.667)	-2.652*** (0.002)	-1.464** (0.014)	-1.526*** (0.000)
Observations	152	164	152	164
Number of groups	41	47	41	47
Hansen test	(1.000)	(1.000)	(1.000)	(1.000)
Arellano-Bond test for AR(1) in first differences	(0.006)	(0.012)	(0.006)	(0.011)
Arellano-Bond test for AR(2) in first differences	(0.602)	(0.799)	(0.593)	(0.836)

Robust p values in parentheses

\* significant at 10%; \*\* significant at 5%; \*\*\* significant at 1%

Variables in italics are instrumented through the GMM procedure following Arellano and Bover (1995)

<sup>(1)</sup> Year dummies not reported

Table A -8. Cross correlation matrix

	Log Pre-tax ROA	Log Pre-tax ROE	Log Pre-Provision Profit over Assets	Log NPL ratio	Log NPL	Flow of NPLs	Loan Growth	Log Loans	Loan Growth (-1)	Log Loans over Assets	Log Deposits over Assets	Log Equity over Assets	Log Equity over Assets (-1)	Rank Technical Inefficiency	Foreign Capital	Listed	Recapitalized	Log NPLs Dispose of	Market Share on Assets	Concentration	Real Interest on Loans	Maximum Spread	Real GDP Growth	Inflation	Volatility of Interest Rates	
Log Pre-tax ROA	1																									
Log Pre-tax ROE	0,36	1																								
Log Pre-Provision Profit over Assets	0,88	0,38	1																							
Log NPL ratio	-0,19	-0,35	-0,21	1																						
Log NPL	-0,19	0,16	0,01	0,30	1																					
Flow of NPLs	0,00	0,02	-0,06	-0,01	-0,28	1																				
Loan Growth	0,08	-0,06	0,09	-0,17	0,01	0,17	1																			
Log Loans	-0,32	0,38	-0,19	-0,09	0,92	-0,29	-0,07	1																		
Loan Growth (-1)	-0,02	0,14	0,07	-0,31	-0,08	0,16	0,33	0,08	1																	
Log Loans over Assets	-0,33	0,28	-0,25	-0,24	0,36	-0,02	-0,03	0,53	0,24	1																
Log Deposits over Assets	-0,07	0,40	-0,01	-0,08	0,16	-0,04	0,04	0,22	0,08	0,32	1															
Log Equity over Assets	0,52	-0,60	0,38	0,15	-0,37	-0,04	0,12	-0,61	-0,17	-0,53	-0,45	1														
Log Equity over Assets (-1)	0,47	-0,61	0,35	0,16	-0,34	0,01	0,14	-0,60	-0,14	-0,48	-0,42	0,94	1													
Rank Technical Inefficiency	-0,12	-0,42	-0,20	0,52	0,06	-0,15	-0,07	-0,20	-0,10	-0,05	-0,11	0,32	0,40	1												
Foreign Capital	0,01	0,16	0,07	-0,13	0,08	0,08	0,01	0,14	0,11	0,06	0,08	-0,14	-0,13	-0,08	1											
Listed	0,05	0,24	0,12	-0,20	0,11	0,08	0,02	0,18	0,20	0,11	0,09	-0,18	-0,20	-0,26	0,18	1										
Recapitalized	-0,04	0,02	-0,03	-0,01	0,16	-0,48	-0,01	0,18	-0,02	0,05	0,05	-0,03	-0,09	0,06	-0,03	-0,03	1									
Log NPLs Dispose of	-0,04	0,01	-0,01	0,04	0,24	-0,66	-0,02	0,20	-0,05	0,04	0,05	-0,04	-0,04	0,07	-0,03	-0,03	-0,01	1								
Market Share on Assets	-0,24	0,00	-0,10	0,23	0,67	-0,50	-0,04	0,55	-0,10	0,17	0,10	-0,20	-0,21	0,09	-0,05	-0,05	0,36	0,42	1							
Concentration	0,14	0,08	0,04	0,26	0,22	0,08	-0,08	0,09	-0,10	0,19	0,05	0,03	0,16	0,00	-0,10	-0,08	0,02	0,01	0,07	1						
Real Interest on Loans	0,08	0,07	0,01	0,20	0,13	0,11	-0,09	0,06	-0,03	0,19	0,07	-0,01	0,08	0,00	-0,08	-0,08	0,07	-0,05	0,04	0,81	1					
Maximum Spread	-0,16	-0,12	-0,11	-0,11	-0,07	-0,08	0,08	-0,04	0,00	-0,12	-0,05	-0,03	-0,02	0,00	0,06	0,08	-0,11	0,10	-0,03	-0,66	-0,87	1				
Real GDP Growth	0,06	0,03	0,12	-0,27	-0,22	-0,12	0,08	-0,11	0,05	-0,20	-0,07	0,05	-0,10	0,00	0,06	0,05	0,00	-0,01	-0,06	-0,80	-0,74	0,37	1			
Inflation	0,18	0,06	0,19	-0,21	-0,14	-0,10	0,10	-0,08	0,01	-0,15	-0,11	0,12	0,05	0,00	0,04	0,03	-0,06	0,03	-0,03	-0,49	-0,77	0,49	0,77	1		
Volatility of Interest Rates	0,24	0,06	0,17	0,01	-0,05	0,07	-0,05	-0,02	0,03	0,03	-0,02	0,15	0,13	0,00	-0,06	-0,08	0,12	-0,08	0,00	0,45	0,67	-0,76	-0,26	-0,29	1	
System Credit Growth	0,11	0,14	0,15	-0,16	-0,14	0,01	0,00	-0,05	0,13	-0,06	0,00	-0,01	-0,16	0,00	0,04	-0,02	0,07	-0,15	-0,04	-0,25	0,03	-0,46	0,52	0,22	0,34	



## BANCO DE ESPAÑA PUBLICATIONS

### WORKING PAPERS<sup>1</sup>

- 0801 ENRIQUE BENITO: Size, growth and bank dynamics.
- 0802 RICARDO GIMENO AND JOSÉ MANUEL MARQUÉS: Uncertainty and the price of risk in a nominal convergence process.
- 0803 ISABEL ARGIMÓN AND PABLO HERNÁNDEZ DE COS: Los determinantes de los saldos presupuestarios de las Comunidades Autónomas.
- 0804 OLYMPIA BOVER: Wealth inequality and household structure: US vs. Spain.
- 0805 JAVIER ANDRÉS, J. DAVID LÓPEZ-SALIDO AND EDWARD NELSON: Money and the natural rate of interest: structural estimates for the United States and the euro area.
- 0806 CARLOS THOMAS: Search frictions, real rigidities and inflation dynamics.
- 0807 MAXIMO CAMACHO AND GABRIEL PEREZ-QUIROS: Introducing the EURO-STING: Short Term Indicator of Euro Area Growth.
- 0808 RUBÉN SEGURA-CAYUELA AND JOSEP M. VILARRUBIA: The effect of foreign service on trade volumes and trade partners.
- 0809 AITOR ERCE: A structural model of sovereign debt issuance: assessing the role of financial factors.
- 0810 ALICIA GARCÍA-HERRERO AND JUAN M. RUIZ: Do trade and financial linkages foster business cycle synchronization in a small economy?
- 0811 RUBÉN SEGURA-CAYUELA AND JOSEP M. VILARRUBIA: Uncertainty and entry into export markets.
- 0812 CARMEN BROTO AND ESTHER RUIZ: Testing for conditional heteroscedasticity in the components of inflation.
- 0813 JUAN J. DOLADO, MARCEL JANSEN AND JUAN F. JIMENO: On the job search in a model with heterogeneous jobs and workers.
- 0814 SAMUEL BENTOLILA, JUAN J. DOLADO AND JUAN F. JIMENO: Does immigration affect the Phillips curve? Some evidence for Spain.
- 0815 ÓSCAR J. ARCE AND J. DAVID LÓPEZ-SALIDO: Housing bubbles.
- 0816 GABRIEL JIMÉNEZ, VICENTE SALAS-FUMÁS AND JESÚS SAURINA: Organizational distance and use of collateral for business loans.
- 0817 CARMEN BROTO, JAVIER DÍAZ-CASSOU AND AITOR ERCE-DOMÍNGUEZ: Measuring and explaining the volatility of capital flows towards emerging countries.
- 0818 CARLOS THOMAS AND FRANCESCO ZANETTI: Labor market reform and price stability: an application to the Euro Area.
- 0819 DAVID G. MAYES, MARÍA J. NIETO AND LARRY D. WALL: Multiple safety net regulators and agency problems in the EU: Is Prompt Corrective Action partly the solution?
- 0820 CARMEN MARTÍNEZ-CARRASCAL AND ANNALISA FERRANDO: The impact of financial position on investment: an analysis for non-financial corporations in the euro area.
- 0821 GABRIEL JIMÉNEZ, JOSÉ A. LÓPEZ AND JESÚS SAURINA: Empirical analysis of corporate credit lines.
- 0822 RAMÓN MARÍA-DOLORES: Exchange rate pass-through in new Member States and candidate countries of the EU.
- 0823 IGNACIO HERNANDO, MARÍA J. NIETO AND LARRY D. WALL: Determinants of domestic and cross-border bank acquisitions in the European Union.
- 0824 JAMES COSTAIN AND ANTÓN NÁKOV: Price adjustments in a general model of state-dependent pricing.
- 0825 ALFREDO MARTÍN-OLIVER, VICENTE SALAS-FUMÁS AND JESÚS SAURINA: Search cost and price dispersion in vertically related markets: the case of bank loans and deposits.
- 0826 CARMEN BROTO: Inflation targeting in Latin America: Empirical analysis using GARCH models.
- 0827 RAMÓN MARÍA-DOLORES AND JESÚS VAZQUEZ: Term structure and the estimated monetary policy rule in the eurozone.
- 0828 MICHIEL VAN LEUVENSTEIJN, CHRISTOFFER KOK SØRENSEN, JACOB A. BIKKER AND ADRIAN VAN RIXTEL: Impact of bank competition on the interest rate pass-through in the euro area.
- 0829 CRISTINA BARCELÓ: The impact of alternative imputation methods on the measurement of income and wealth: Evidence from the Spanish survey of household finances.
- 0830 JAVIER ANDRÉS AND ÓSCAR ARCE: Banking competition, housing prices and macroeconomic stability.
- 0831 JAMES COSTAIN AND ANTÓN NÁKOV: Dynamics of the price distribution in a general model of state-dependent pricing.

---

1. Previously published Working Papers are listed in the Banco de España publications catalogue.

- 0832 JUAN A. ROJAS: Social Security reform with imperfect substitution between less and more experienced workers.
- 0833 GABRIEL JIMÉNEZ, STEVEN ONGENA, JOSÉ LUIS PEYDRÓ AND JESÚS SAURINA: Hazardous times for monetary policy: What do twenty-three million bank loans say about the effects of monetary policy on credit risk-taking?
- 0834 ENRIQUE ALBEROLA AND JOSÉ MARÍA SERENA: Sovereign external assets and the resilience of global imbalances.
- 0835 AITOR LACUESTA, SERGIO PUENTE AND PILAR CUADRADO: Omitted variables in the measure of a labour quality index: the case of Spain.
- 0836 CHIARA COLUZZI, ANNALISA FERRANDO AND CARMEN MARTÍNEZ-CARRASCAL: Financing obstacles and growth: An analysis for euro area non-financial corporations.
- 0837 ÓSCAR ARCE, JOSÉ MANUEL CAMPA AND ÁNGEL GAVILÁN: Asymmetric collateral requirements and output composition.
- 0838 ÁNGEL GAVILÁN AND JUAN A. ROJAS: Solving Portfolio Problems with the Smolyak-Parameterized Expectations Algorithm.
- 0901 PRAVEEN KUJAL AND JUAN RUIZ: International trade policy towards monopoly and oligopoly.
- 0902 CATIA BATISTA, AITOR LACUESTA AND PEDRO VICENTE: Micro evidence of the brain gain hypothesis: The case of Cape Verde.
- 0903 MARGARITA RUBIO: Fixed and variable-rate mortgages, business cycles and monetary policy.
- 0904 MARIO IZQUIERDO, AITOR LACUESTA AND RAQUEL VEGAS: Assimilation of immigrants in Spain: A longitudinal analysis.
- 0905 ÁNGEL ESTRADA: The mark-ups in the Spanish economy: international comparison and recent evolution.
- 0906 RICARDO GIMENO AND JOSÉ MANUEL MARQUÉS: Extraction of financial market expectations about inflation and interest rates from a liquid market.
- 0907 LAURA HOSPIDO: Job changes and individual-job specific wage dynamics.
- 0908 M.ª DE LOS LLANOS MATEA AND JUAN S. MORA: La evolución de la regulación del comercio minorista en España y sus implicaciones macroeconómicas.
- 0909 JAVIER MENCÍA AND ENRIQUE SENTANA: Multivariate location-scale mixtures of normals and mean-variance-skewness portfolio allocation
- 0910 ALICIA GARCÍA-HERRERO, SERGIO GAVILÁ AND DANIEL SANTABÁRBARA: What explains the low profitability of Chinese banks?