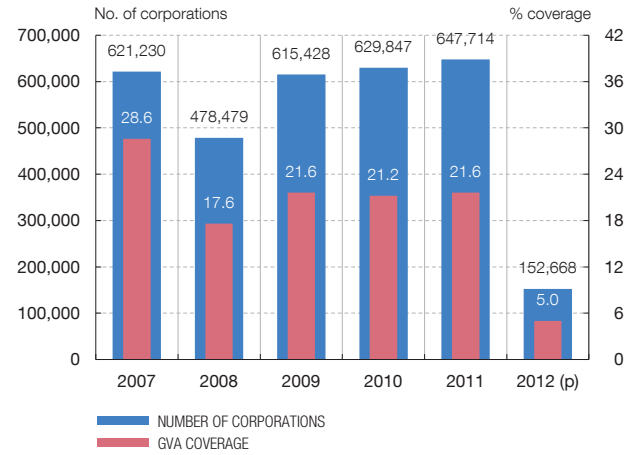


SUMMARY CHARTS
1 COVERAGE AND SECTORAL STRUCTURE

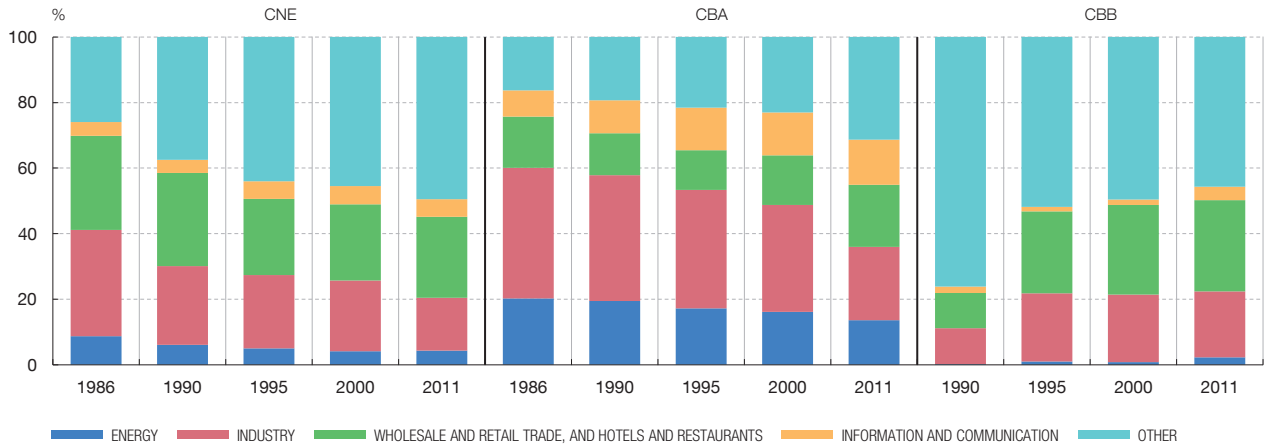
1.1 NUMBER OF CORPORATIONS CBA AND COVERAGE



1.2 NUMBER OF CORPORATIONS CBB (SMALL) AND COVERAGE



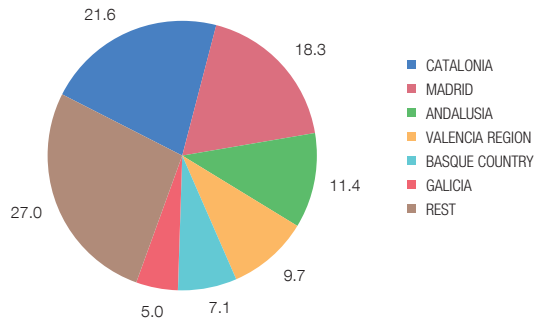
1.3 GROSS VALUE ADDED BY SECTOR



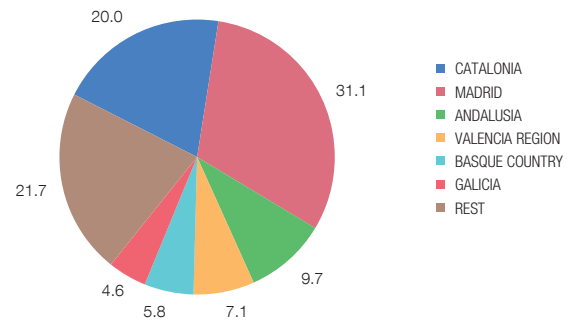
SUMMARY CHARTS

1 COVERAGE AND SECTORAL STRUCTURE

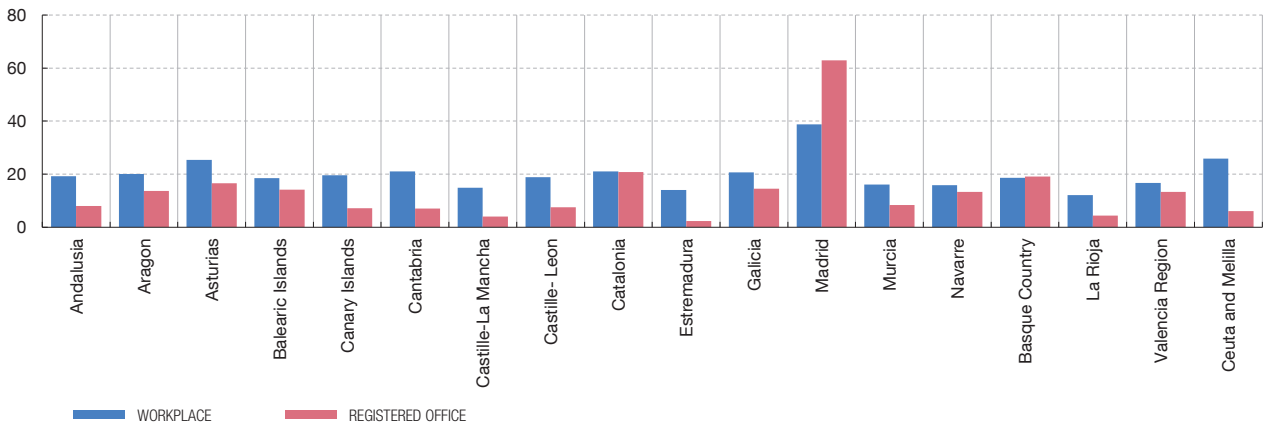
1.4 TOTAL-ECONOMY COMPENSATION OF EMPLOYEES BY AUTONOMOUS REGION (2010)



1.5 COMPENSATION OF EMPLOYEES OF CORPORATIONS REPORTING TO THE CBSO, BY REGION OF WORKPLACE (2010)



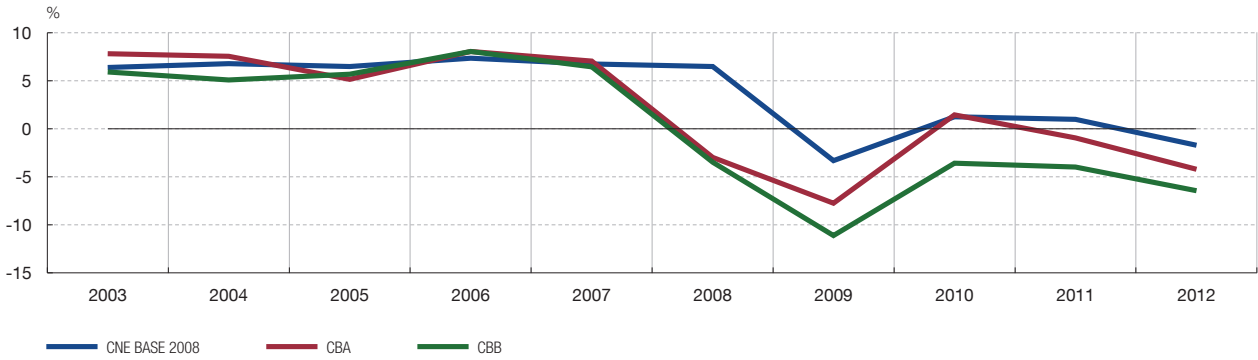
1.6 COMPENSATION OF EMPLOYEES. CENTRAL BALANCE SHEET DATA OFFICE COVERAGE, BY AUTONOMOUS REGION (2010)



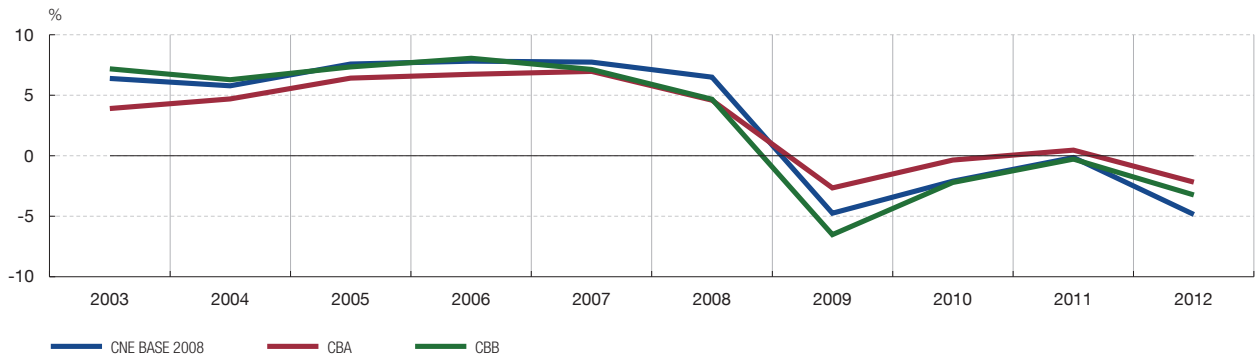
SUMMARY CHARTS

2 REPRESENTATIVENESS OF THE SAMPLES. Comparison of CNE/CBA/CBB information

2.1 GROSS VALUE ADDED AT FACTOR COST
Growth rates



2.2 COMPENSATION OF EMPLOYEES
Growth rates



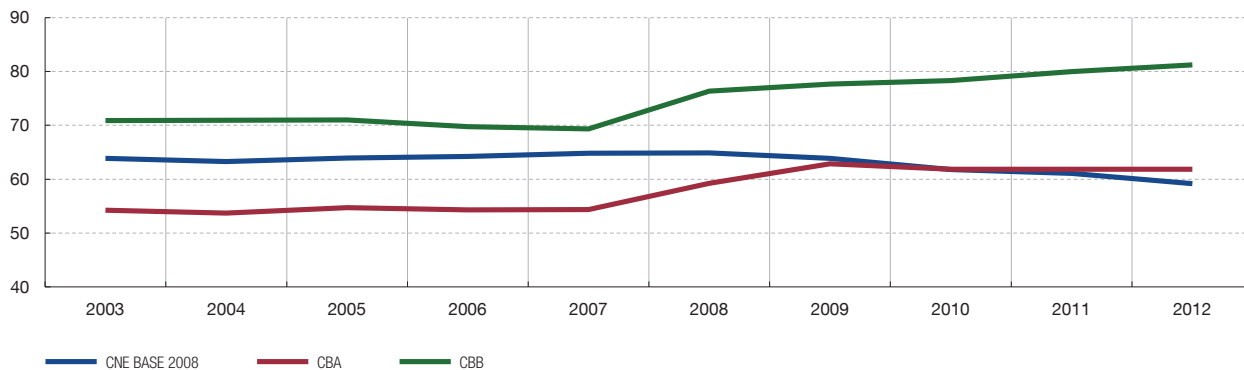
2.3 FINANCIAL COSTS
Growth rates



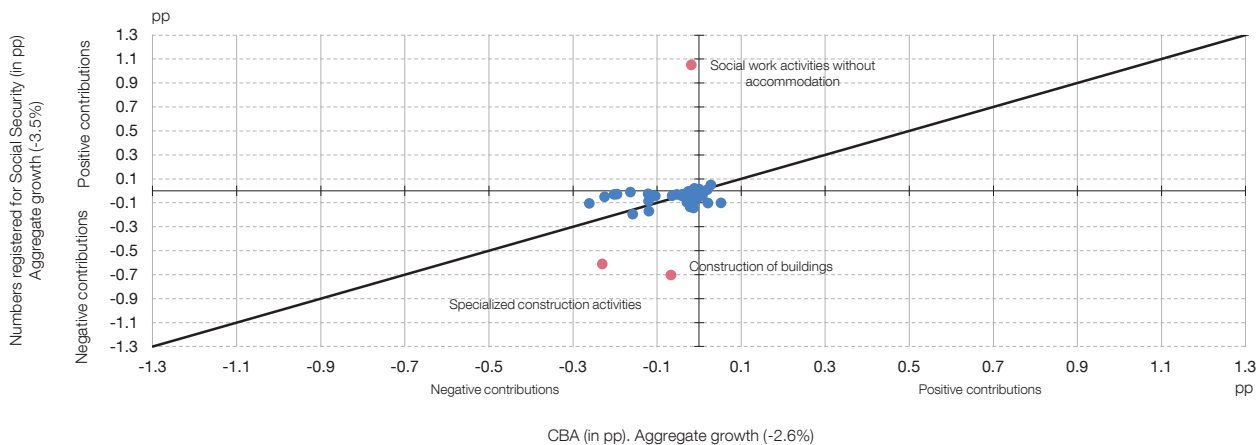
SUMMARY CHARTS

2 REPRESENTATIVENESS OF THE SAMPLES. COMPARISON OF CNE/CBA/CBB information

2.4 COMPENSATION OF EMPLOYEES/GROSS VALUE ADDED



2.5 COMPATIBILITY WITH EMPLOYMENT OF SOCIAL SECURITY STATISTICS (2011)
Contributions to growth rate of employment by branches of activity

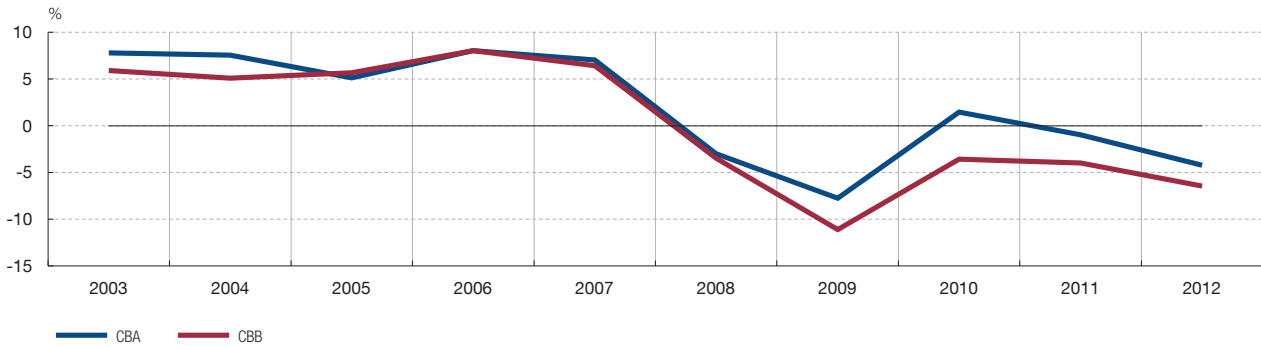


SUMMARY CHARTS

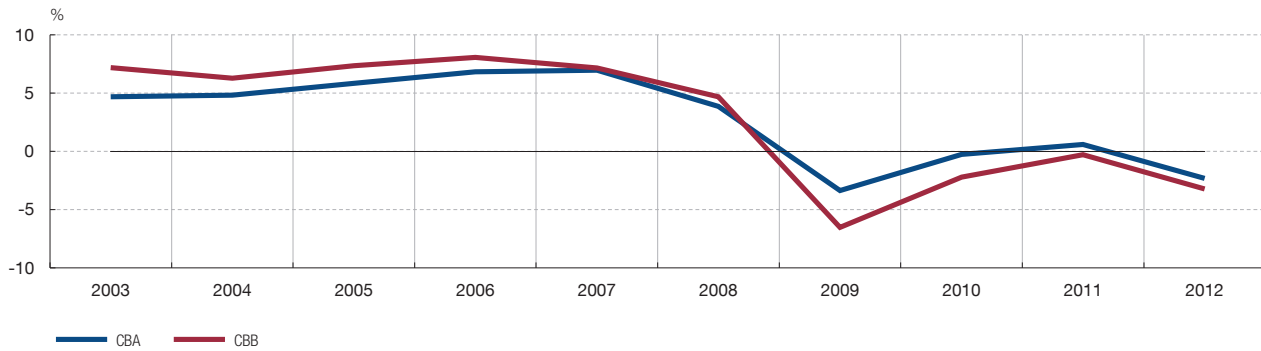
3 RESULTS OF NON-FINANCIAL CORPORATIONS (2003-2012)

3.1 Main indicators for all corporations (CBA) and for small corporations (CBB)

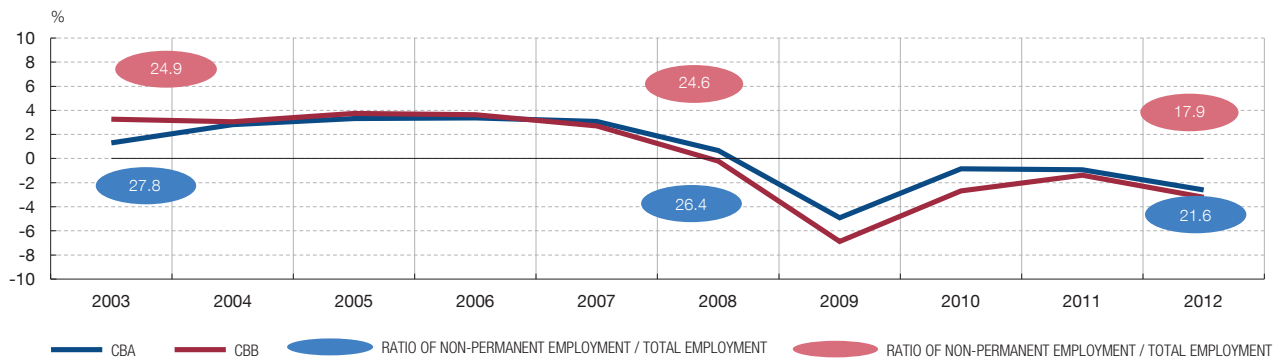
3.1.1 GROSS VALUE ADDED AT FACTOR COST
Growth rates



3.1.2 PERSONNEL COSTS
Growth rates



3.1.3 EMPLOYMENT (Growth rates) AND TEMPORARY EMPLOYMENT



SUMMARY CHARTS

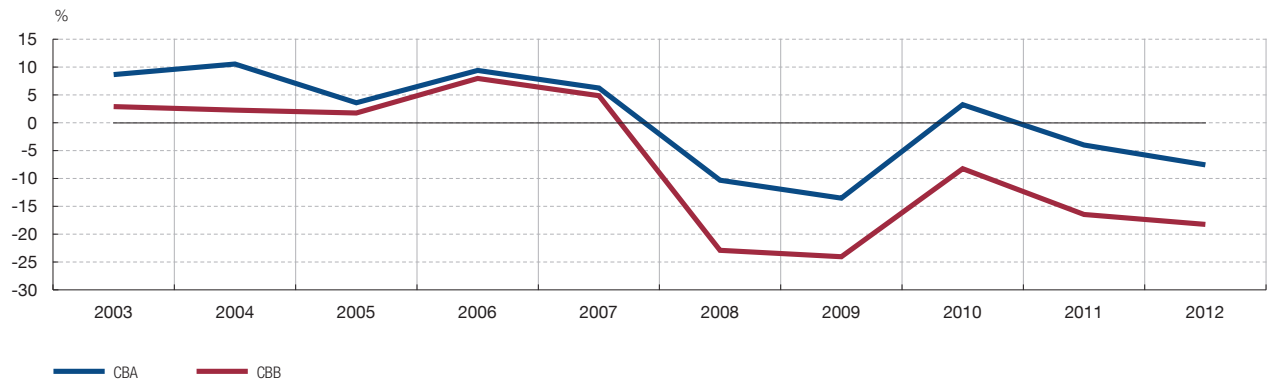
3 RESULTS OF NON-FINANCIAL CORPORATIONS (2003-2012)

3.1 Main indicators for all corporations (CBA) and for small corporations (CBB)

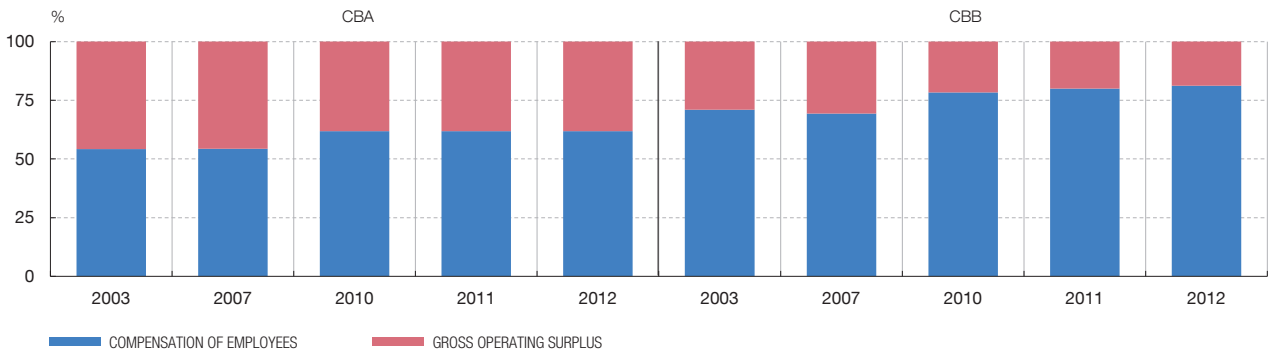
3.1.4 PERSONNEL COSTS PER EMPLOYEE. COMPARISON WITH YEAR CONSUMER PRICE INDEX
Growth rates



3.1.5 GROSS OPERATING PROFIT
Growth rates



3.1.6 DISTRIBUTION OF GVA BETWEEN COMPENSATION OF EMPLOYEES AND GROSS OPERATING SURPLUS

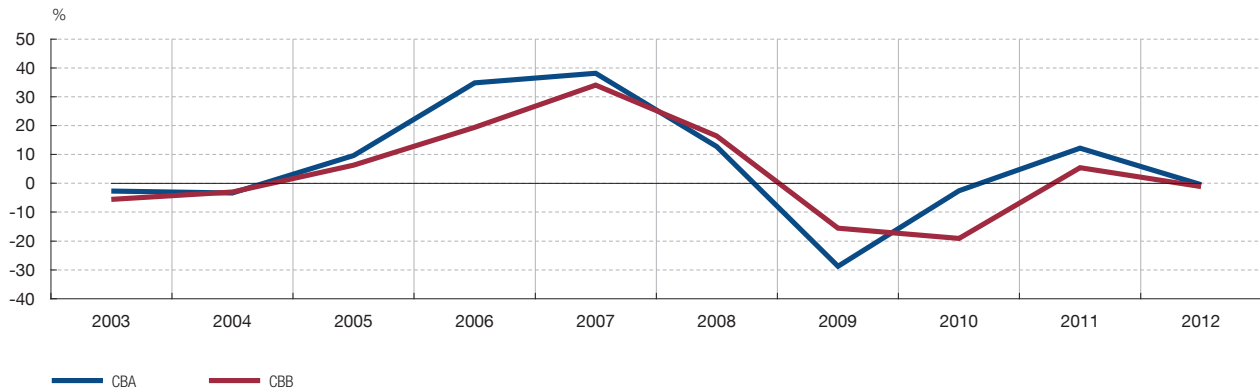


SUMMARY CHARTS

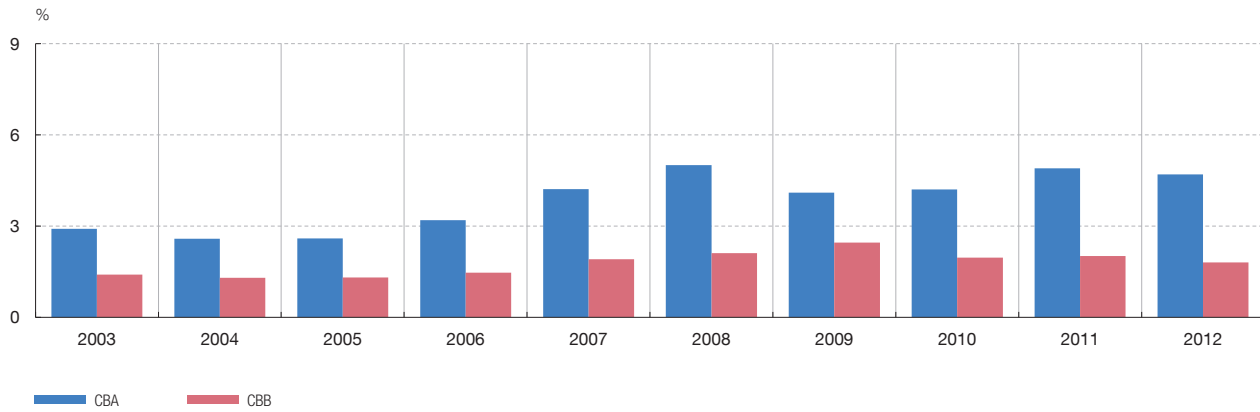
3 RESULTS OF NON-FINANCIAL CORPORATIONS (2003-2012)

3.1 Main indicators for all corporations (CBA) and for small corporations (CBB)

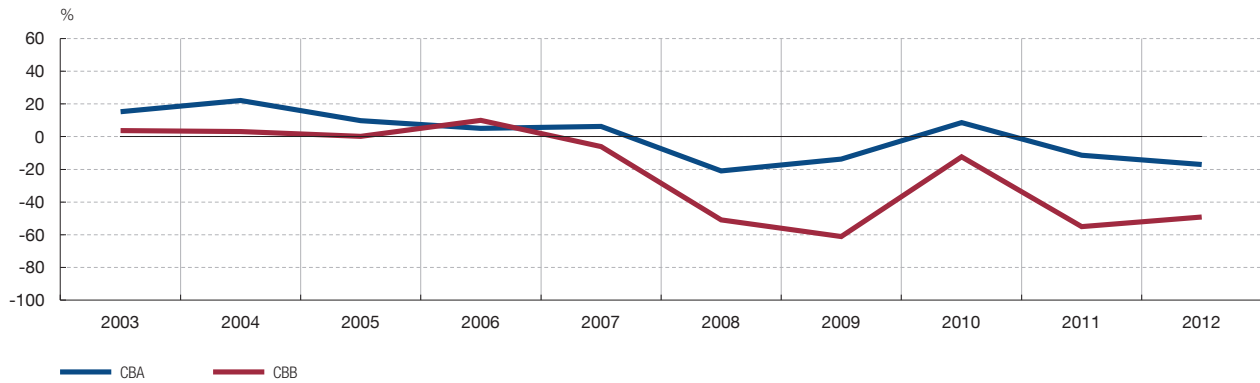
3.1.7 FINANCIAL COSTS
Growth rates



3.1.8 FINANCIAL COSTS/OUTPUT



3.1.9 ORDINARY NET PROFIT
Growth rates

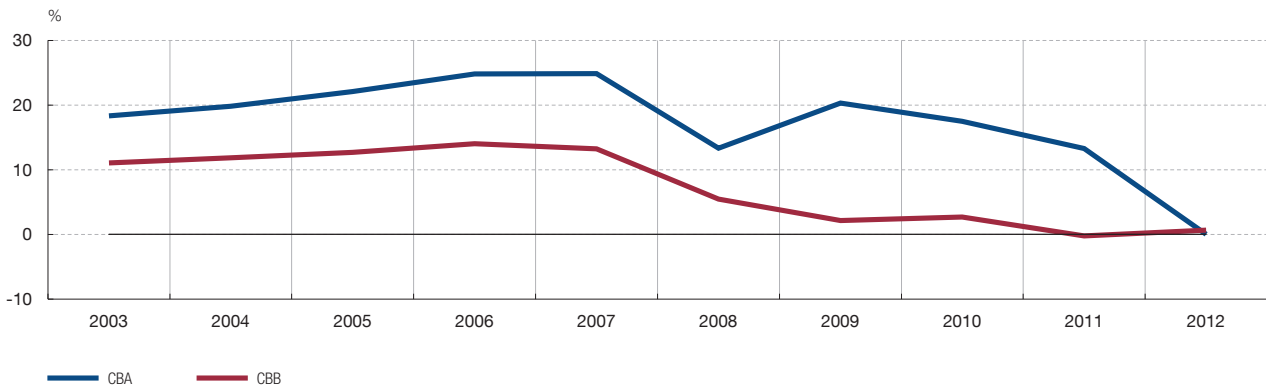


SUMMARY CHARTS

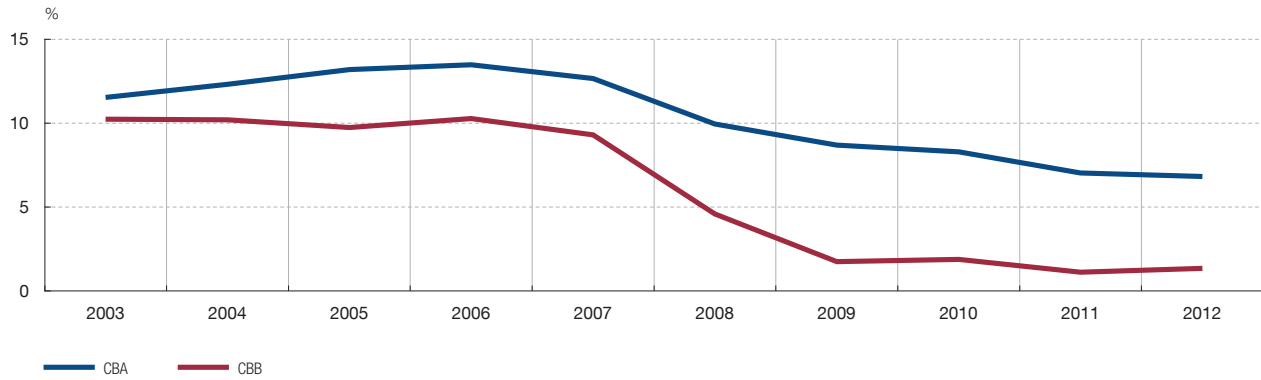
3 RESULTS OF NON-FINANCIAL CORPORATIONS (2003-2012)

3.1 Main indicators for all corporations (CBA) and for small corporations (CBB)

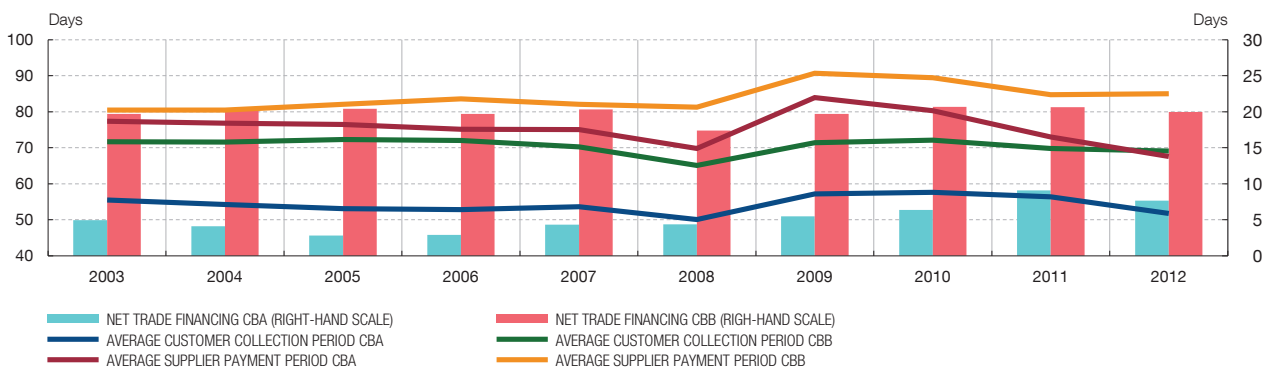
3.1.10 NET RESULT/GROSS VALUE ADDED



3.1.11 ORDINARY RETURN ON EQUITY (R.3)
Ratio



3.1.12 AVERAGE CUSTOMER COLLECTION PERIOD, AVERAGE SUPPLIER PAYMENT PERIOD AND NET TRADE FINANCING

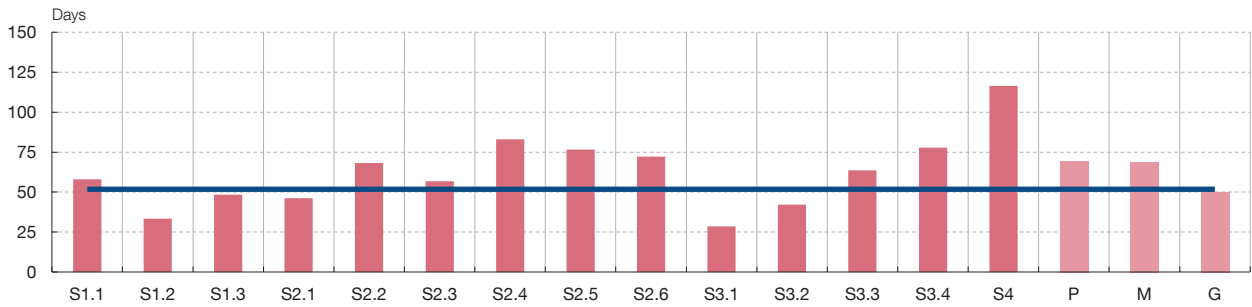


SUMMARY CHARTS

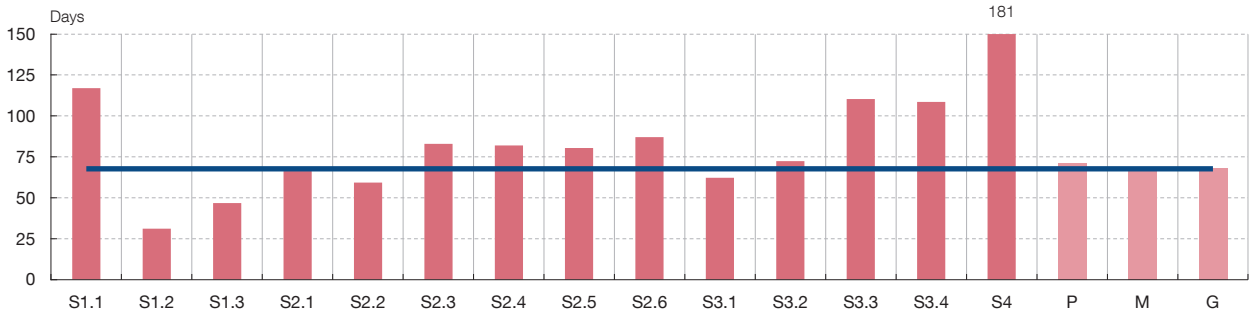
3 RESULTS OF NON-FINANCIAL CORPORATIONS (2003-2012)

3.1 Main indicators for all corporations (CBA) and for small corporations (CBB)

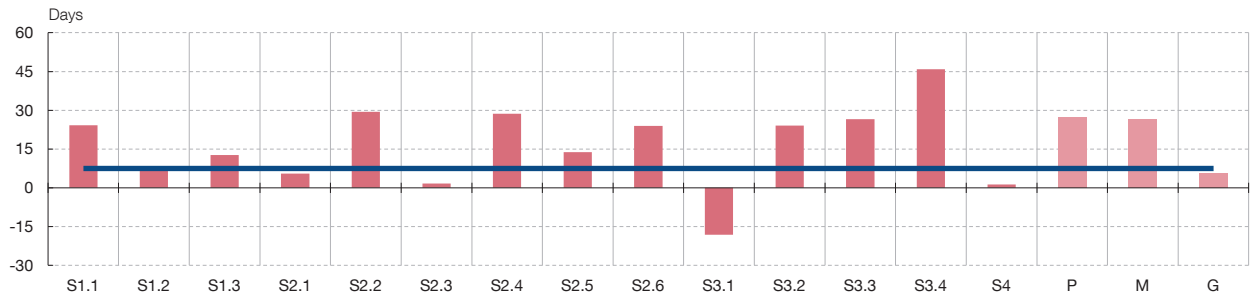
3.1.13 AVERAGE CUSTOMER COLLECTION PERIOD (CBA 2012)



3.1.14 AVERAGE SUPPLIER PAYMENT PERIOD (CBA 2012)



3.1.15 NET TRADE FINANCING (CUSTOMERS-SUPPLIERS)/SALES (CBA 2012)



S1.1 Mining and quarrying

S1.2 Coke and refined petroleum products

S1.3 Electricity, gas and water

S2.1 Food products, beverages and tobacco

S2.2 Chemical industry

S2.3 Manufacture of metallic and mineral products

S2.4 Manufacture of computer and electronic products, and of electrical equipment

S2.5 Manufacture of transport equipment

S2.6 Other manufacturing industries (n.e.s.)

S3.1 Wholesale and retail trade, and hotels and restaurants

S3.2 Transport

S3.3 Information and communication

S3.4 Other services

S4 Activities with low coverage

— Total empresas

P Small

M Medium-sized

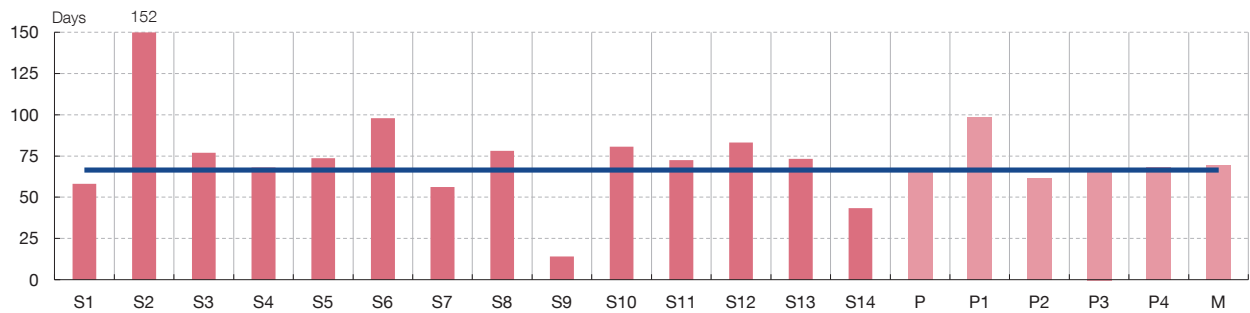
G Large

SUMMARY CHARTS

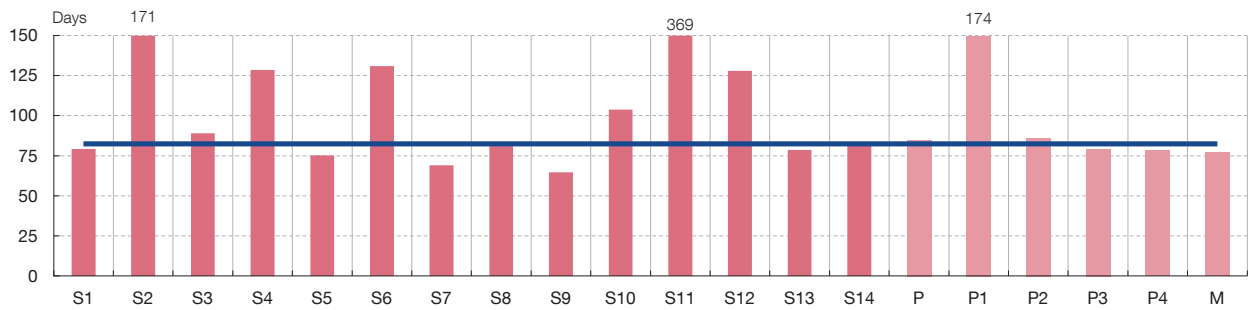
3 RESULTS OF NON-FINANCIAL CORPORATIONS (2003-2012)

3.1 Main indicators for all corporations (CBA) and for small corporations (CBB)

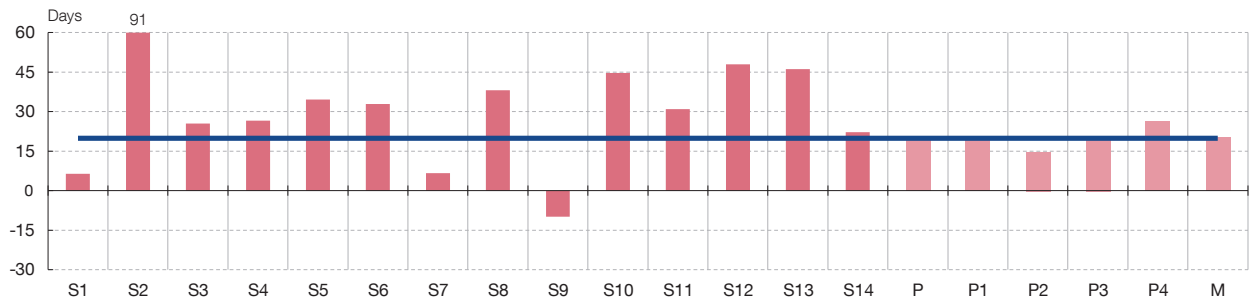
3.1.16 AVERAGE CUSTOMER COLLECTION PERIOD (CBB 2012)



3.1.17 AVERAGE SUPPLIER PAYMENT PERIOD (CBB 2012)



3.1.18 NET TRADE FINANCING (CUSTOMERS-SUPPLIERS)/SALES (CBB 2012)



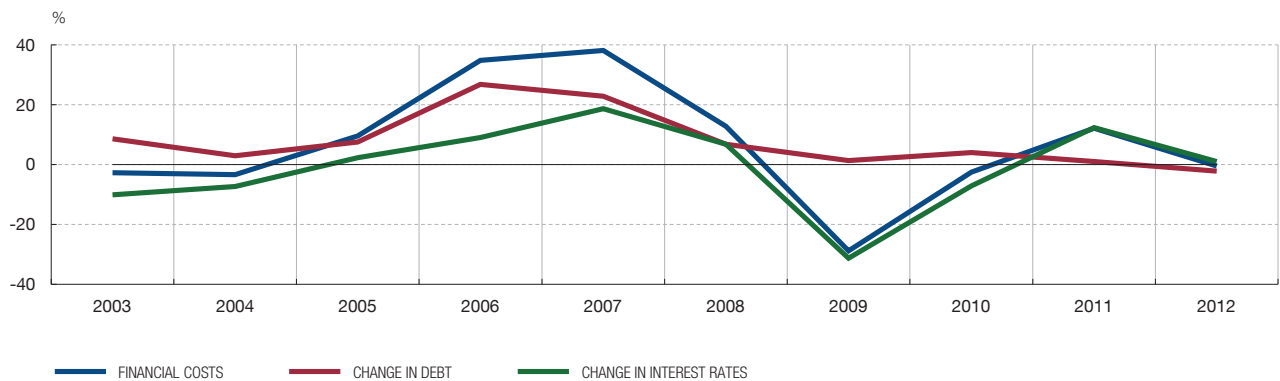
- | | | | |
|-----|--|-----|---|
| S1 | Agriculture, forestry and fishing | S11 | Real estate activities |
| S2 | Mining and quarrying | S12 | Professional, scientific and technical activities |
| S3 | Manufacturing | S13 | Administrative and support service activities |
| S4 | Electricity, gas, steam and air conditioning supply | S14 | Other services |
| S5 | Water supply; sewerage, waste management and remediation activities | — | Total SMEs |
| S6 | Construction | P | Total small |
| S7 | Wholesale and retail trade; repair of motor vehicles and motorcycles | P1 | Without employees and not information |
| S8 | Transport and storage | P2 | Up to 9 employees |
| S9 | Accommodation and food service activities | P3 | From 10 to 19 employees |
| S10 | Information and communication | P4 | From 20 to 49 employees |
| | | M | Medium-sized (From 50 to 249 employees) |

SUMMARY CHARTS

3 RESULTS OF NON-FINANCIAL CORPORATIONS (2003-2012)

3.2 Others indicators for all corporations (CBA)

PROFIT AND LOSS ACCOUNT 3.2.1 COMPONENTS OF FINANCIAL COSTS Contribution



BALANCE SHEET AND ITS FLOWS 3.2.2 ASSETS Structure



BALANCE SHEET AND ITS FLOWS 3.2.3 LIABILITIES Structure



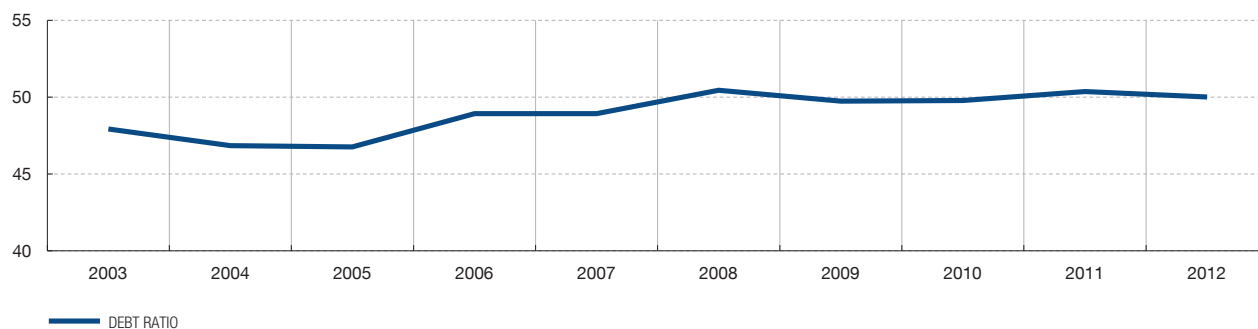
SUMMARY CHARTS

3 RESULTS OF NON-FINANCIAL CORPORATIONS (2003-2012)

3.2 Others indicators for all corporations (CBA)

BALANCE SHEET AND ITS FLOWS

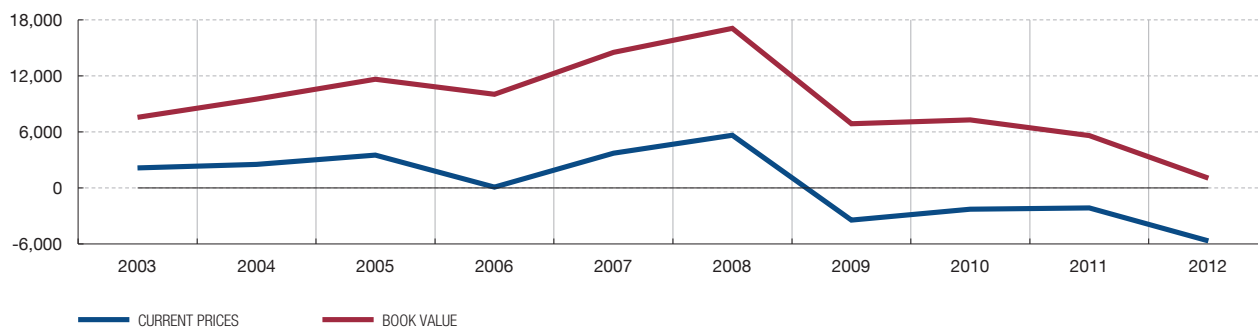
3.2.4 DEBT RATIO (E.1 INTEREST-BEARING EXTERNAL FUNDS/NET ASSETS)



BALANCE SHEET AND ITS FLOWS

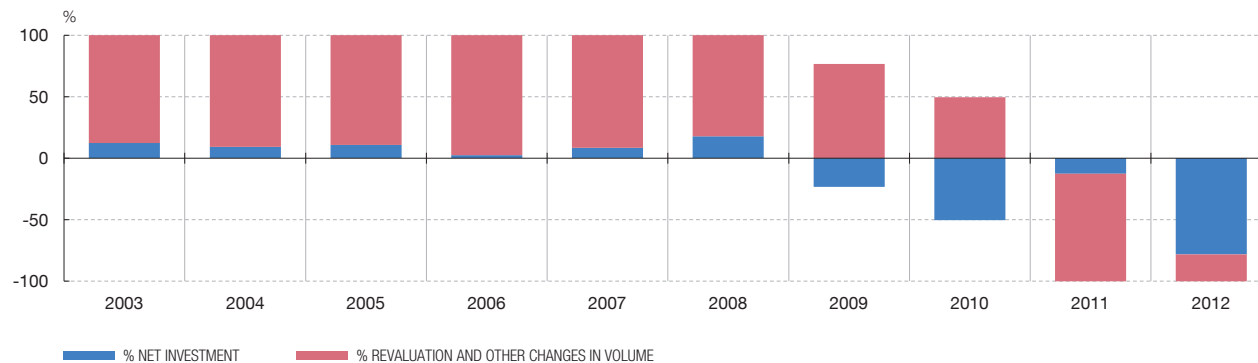
3.2.5 NET FIXED CAPITAL FORMATION

Absolute values



BALANCE SHEET AND ITS FLOWS

3.2.6 COMPOSITION OF INCREASE IN TANGIBLE FIXED ASSETS



SUMMARY CHARTS

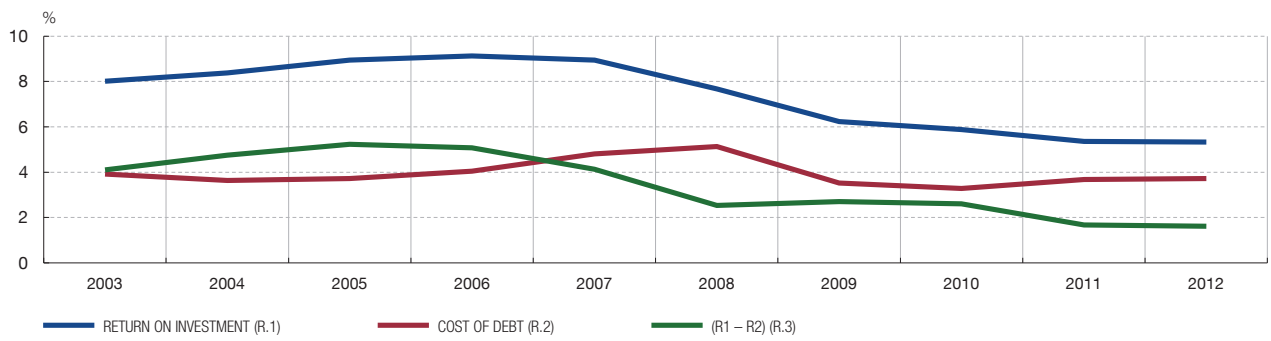
CHART 3.2.3

3 RESULTS OF NON-FINANCIAL CORPORATIONS (2003-2012)

3.2 Others indicators for all corporations (CBA)

COMBINED RATIOS

3.2.7 RETURN ON INVESTMENT (R.1), COST OF DEBT (R.2) AND THE DIFFERENCE (R.1 - R.2)



NOTAS A LOS GRÁFICOS DE SÍNTEISIS

CHART 1.1

SOURCES: Banco de España and Spanish National Accounts (CNE) (INE)
See table 1.1, columns 6 and 7.

CHART 1.2

SOURCES: Banco de España and Spanish National Accounts (CNE) (INE)
See table 1.1 Mercantile registries, column 5.

CHART 1.3

SOURCES: Banco de España and Spanish National Accounts (CNE) (INE)
See table 1.4, column 1 (CNE) and table 1.8 (CBA).

CHART 1.4

SOURCES: Banco de España and Spanish National Accounts (CNE) (INE)
See table 1.6, column 7.

CHART 1.5

SOURCES: Banco de España and Spanish National Accounts (CNE) (INE)
See table 1.6, column 9.

CHART 1.6

SOURCES: Banco de España and Spanish National Accounts (CNE) (INE)
See table 1.6, columns 10 and 11.

CHART 2.1

SOURCES: Banco de España and Spanish National Accounts (CNE) (INE)
See table 3.9.1 (CNE), table 3.1.1 (CBA), table 2.1.3 (CBB, Mercantile registries).

CHART 2.2

SOURCES: Banco de España and Spanish National Accounts (CNE) (INE)
See table 3.9.1 (CNE), table 3.1.3 (CBA), table 2.1.3 (CBB, Mercantile registries).

CHART 2.3

SOURCES: Banco de España and Spanish National Accounts (CNE) (INE)
See table 3.9.1 (CNE), table 3.1.3 (CBA), table 2.1.3 (CBB, Mercantile registries).

CHART 2.4

SOURCES: Banco de España and Spanish National Accounts (CNE) (INE)
See table 3.9.1 (CNE), table 3.1.2 (CBA), table 2.1.2 (CBB, Mercantile registries).

CHART 2.5

SOURCE: Banco de España.

The continuous line depicts the bisector on which, ideally, the observations of each sector of activity should lie in the event of full coincidence between the two sources of statistical information (CBA and Social Security registrations). The observations showing distance from this line are thus those that evidence a greater discrepancy. Their absolute significance arises from two differences: one, between the rates of change observed in both sources; and another, owing to the differences in the weights of the sample and population.

CHART 3.1.1

SOURCE: Banco de España.
See table 3.1.1 (CBA), table 2.1.3 (CBB, Mercantile registries).

CHART 3.1.2

SOURCE: Banco de España.
See table 2.1.3 (CBA), table 2.1.3 (CBB, Mercantile registries).

CHART 3.1.3

SOURCE: Banco de España.
See tables 4.1.3 and 4.1.2 (CBA), table 4.1 (CBB, Mercantile registries).

CHART 3.1.4

SOURCE: Banco de España.
See table 4.1.3 (CBA), table 4.1 (CBB, Mercantile registries).

CHART 3.1.5

SOURCE: Banco de España.
See table 2.1.3 (CBA), table 2.1.3 (CBB, Mercantile registries).

CHART 3.1.6

SOURCE: Banco de España.
See table 3.1.2 (CBA), table 2.1.2 (CBB, Mercantile registries).

CHART 3.1.7

SOURCE: Banco de España.
See table 2.1.3 (CBA), table 2.1.3 (CBB, Mercantile registries).

CHART 3.1.8

SOURCE: Banco de España.
See table 3.1.2 (CBA), table 2.1.2 (CBB, Mercantile registries).

CHART 3.1.9

SOURCE: Banco de España.
See table 2.1.3 (CBA), table 2.1.3 (CBB, Mercantile registries).

CHART 3.1.10

SOURCE: Banco de España.
See table 2.1.1 (CBA), table 2.1.1 (CBB, Mercantile registries).

CHART 3.1.11

SOURCE: Banco de España.
See table 2.16 (CBA), table 2.7 (CBB, Mercantile registries).

CHART 3.1.12

SOURCE: Banco de España.
See Tables 2.24, 2.25 and 2.26 (CBA) and Tables 2.10 (R), 2.11 (R) and 2.12 (R) (CBB). The time series is obtained from the closing balance of year N-1, through the linking of this observation with the outstanding ones derived from the closing balances of each data base.

CHARTS 3.1.13 and 3.1.16

SOURCE: Banco de España
See table 2.24 (CBA) and Table 2.10 (R) (CBB).

CHARTS 3.1.14 and 3.1.17

SOURCE: Banco de España.

See Table 2.25 (CBA) and Table 2.11 (R) (CBB).

CHARTS 3.1.15 and 3.1.18

SOURCE: Banco de España.

See Table 2.26 (CBA) and Table 2.12 (R) (CBB).

CHART 3.2.1

SOURCE: Banco de España.

See table 2.1.3.

CHART 3.2.2

SOURCE: Banco de España.

See table 3.4.2.

CHART 3.2.3

SOURCE: Banco de España.

See table 3.5.1.

CHART 3.2.4

SOURCE: Banco de España.

See Table 2.18.1. The time series is obtained from the closing balance of the year N-1, through the linking of this observation with those derived from the closing balances of each data base. See methodological note.

CHART 3.2.5

SOURCE: Banco de España.

See table 3.2.1.

CHART 3.2.6

SOURCE: Banco de España.

See table 3.6.

CHART 3.2.7

SOURCE: Banco de España.

See tables 2.13 and 2.15.