

# 11. GENERAL GOVERNMENT

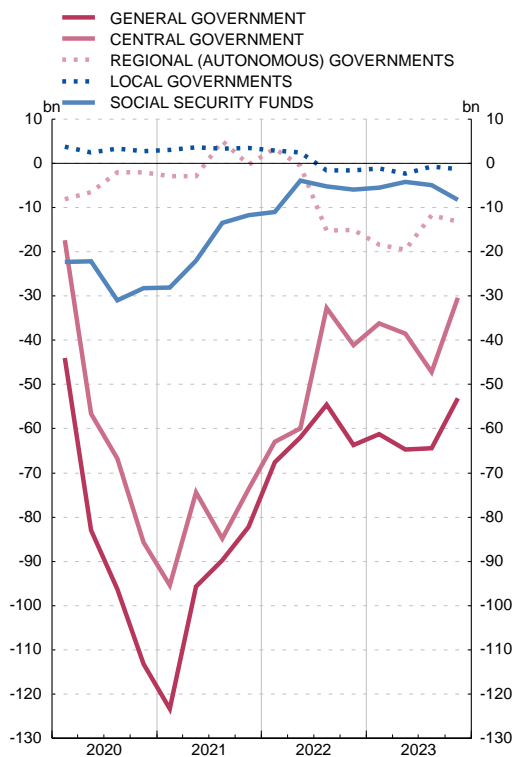
# 11.a Net lending (+) / net borrowing (-)

■ Series depicted in chart.

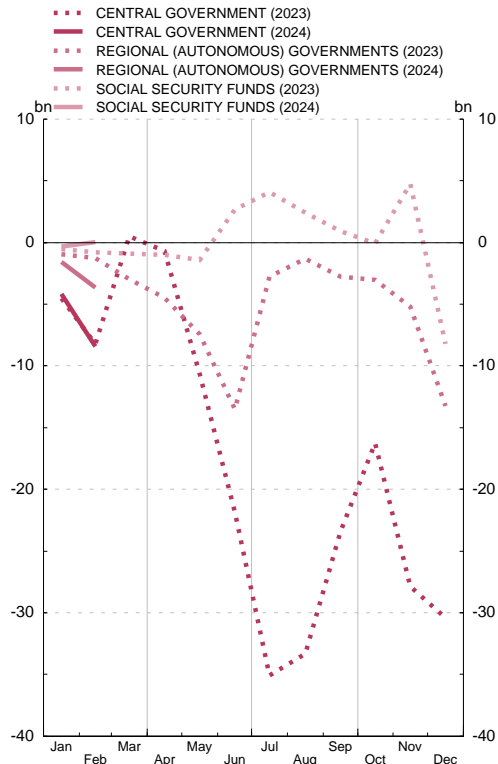
EUR millions

		General government		Central government			Regional (autonomous) governments	Local governments	Social security funds
		1 = 2+4+5+6		Total	Of which:		(b)		
				2	State	(a)			
				3	4	5	6		
22	P	-63 736	-41 176	-44 366	-15 119	-1 545	-5 896		
23	A	-53 159	-30 431	-34 355	-13 254	-1 263	-8 211		
23	Q1	P	-3 546	501	-1 000	-2 977	-891		
	Q2	P	-32 248	-22 375	-23 516	-10 545	3 562		
	Q3	P	8 463	-1 523	-1 618	10 756	-1 747		
	Q4	A	-25 828	-7 034	-8 221	-10 488	-9 135		
23	J-F	P	...	-8 197	-9 373	-1 265	-782		
24	J-F	A	...	-8 441	-9 309	-3 646	56		
23	Apr	P	...	-1 173	-1 156	-1 494	-136		
	May	P	...	-9 986	-10 654	-2 956	-385		
	Jun	P	...	-11 216	-11 706	-6 095	4 083		
	Jul	P	...	-13 186	-13 738	10 752	1 383		
	Aug	P	...	1 748	1 807	1 440	-1 610		
	Sep	P	...	9 915	10 313	-1 436	-1 520		
	Oct	A	...	7 141	7 027	-239	-1 015		
	Nov	A	...	-11 598	-11 825	-2 207	4 868		
	Dec	A	...	-2 577	-3 423	-8 042	-12 988		
24	Jan	A	...	-4 189	-3 752	-1 562	-318		
	Feb	A	...	-4 252	-5 557	-2 084	374		

NET LENDING (+)/NET BORROWING (-)  
By level of government. 4-quarter moving average



NET LENDING (+)/NET BORROWING (-)  
By level of government. Cumulative data from January. Monthly information



SOURCE: Ministerio de Hacienda y Función Pública (IGAE).

a. Detailed operations are published in Table 12.a of the Statistical Bulletin.

b. The breakdown by regional (autonomous) government is published in Table 13.a of the Statistical Bulletin.