

3. FINANCIAL ACCOUNTS (ESA 2010)

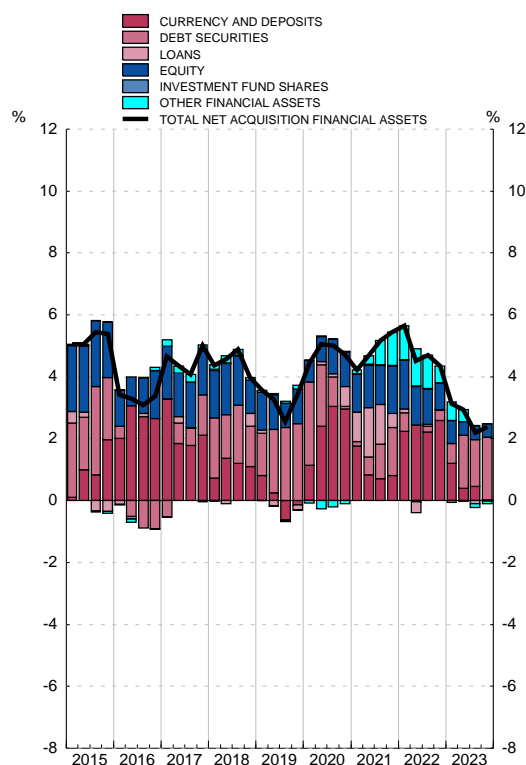
3.12 Rest of the world Financial transactions account

■ Series depicted in chart.

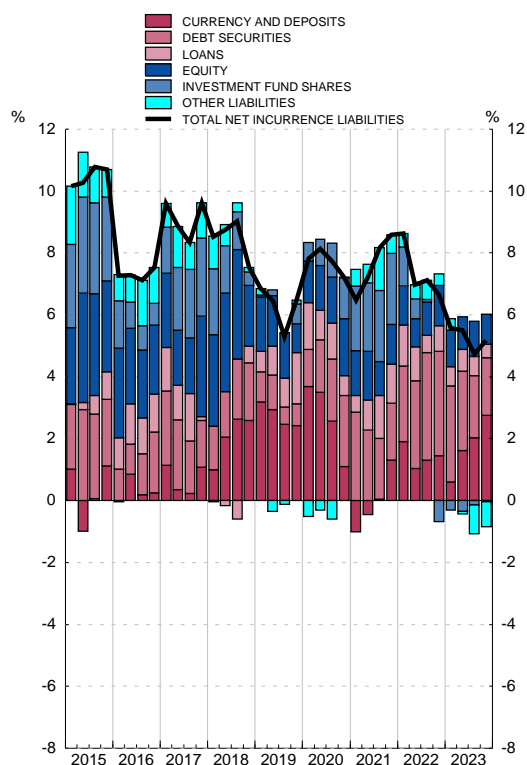
EUR millions

	1	Net acquisition of financial assets						Net incurrence of liabilities						
		2	Main instruments					8	Main instruments					
			3	4	5	6	7		9	10	11	12	13	
		Total	Currency and deposits	Debt securities	Loans	Equity	Investment fund shares	Total	Currency and deposits	Debt securities	Loans	Equity	Investment fund shares	
19		-30 452	101 724	-4 466	73 915	-4 583	33 587	-140	132 176	49 239	14 534	33 884	18 768	13 050
20		-12 064	149 296	93 558	2 785	20 143	35 048	932	161 360	24 576	51 324	14 286	41 352	29 578
21		-20 128	177 326	26 478	50 603	15 026	49 505	1 107	197 454	30 155	41 927	29 104	29 347	52 794
22		-20 746	149 696	89 462	11 388	749	29 647	237	170 442	36 941	86 618	21 102	33 451	-17 160
23		-54 013	82 765	963	70 484	-792	14 613	141	136 778	72 842	49 537	11 144	25 873	-1 062
20 Q1		254	71 866	40 995	26 870	3 450	5 529	133	71 612	52 575	8 942	3 744	18 727	641
Q2		-1 639	47 166	39 269	3 971	-3 177	10 719	154	48 805	10 131	23 069	-2 906	11 290	9 283
Q3		-2 068	8 177	-5 016	-6 955	4 842	11 836	266	10 245	-17 328	7 801	5 349	14 423	5 523
Q4		-8 611	22 088	18 310	-21 101	15 027	6 964	379	30 699	-20 802	11 513	8 099	-3 089	14 131
21 Q1		-783	55 135	2 526	28 831	13 496	8 248	340	55 918	5 391	21 839	1 749	10 025	17 992
Q2		-3 574	64 801	10 768	17 638	17 928	17 056	164	68 375	22 529	11 161	7 038	14 971	13 110
Q3		-7 590	23 612	-9 106	10 596	-5 107	7 555	319	31 201	-5 988	-81	14 713	3 148	7 188
Q4		-8 182	33 777	22 290	-6 462	-11 291	16 645	284	41 959	8 223	9 008	5 605	1 202	14 504
22 Q1		2 483	64 622	50 369	-2 069	2 372	11 013	-34	62 139	20 159	37 669	3 716	10 433	-5 045
Q2		-4 732	30 448	19 127	-3 193	2 178	6 095	198	35 180	2 749	23 025	2 624	7 392	-635
Q3		-6 383	31 494	-15 694	17 941	8 927	4 765	87	37 877	1 242	16 803	1 768	7 823	-6 706
Q4		-12 114	23 132	35 661	-1 291	-12 729	7 774	-14	35 246	12 791	9 121	12 994	7 803	-4 774
23 Q1		-13 321	23 037	2 611	8 687	-700	7 466	-163	36 358	-938	31 539	-1 348	7 790	4 063
Q2		-10 824	23 808	-8 863	33 854	4 113	-4 944	63	34 632	29 288	9 668	4 849	4 311	-1 445
Q3		-13 737	6 361	-13 377	11 122	5 607	5 502	173	20 098	13 041	3 435	-51	10 568	-1 435
Q4		-16 131	29 559	20 592	16 820	-9 812	6 589	67	45 690	31 451	4 895	7 694	3 204	-2 244

NET ACQUISITION OF FINANCIAL ASSETS
Annual percentage change and its components (a)



PASIVOS NETOS CONTRAÍDOS
Annual percentage change and its components (b)



Source: FASE (BE).

a. The annual percentage changes are calculated as: Total of Net acquisition of financial assets / Stock of financial assets at the beginning of the period.

b. The annual percentage changes are calculated as: Total of Net incurrence of liabilities / Stock of liabilities at the beginning of the period.