

3. FINANCIAL ACCOUNTS (ESA 2010)

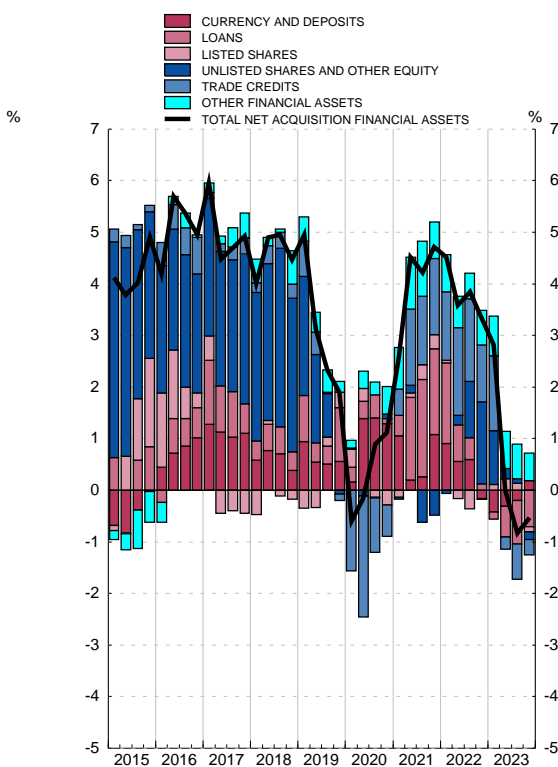
3.4 Non-financial corporations Financial transactions account

■ Series depicted in chart.

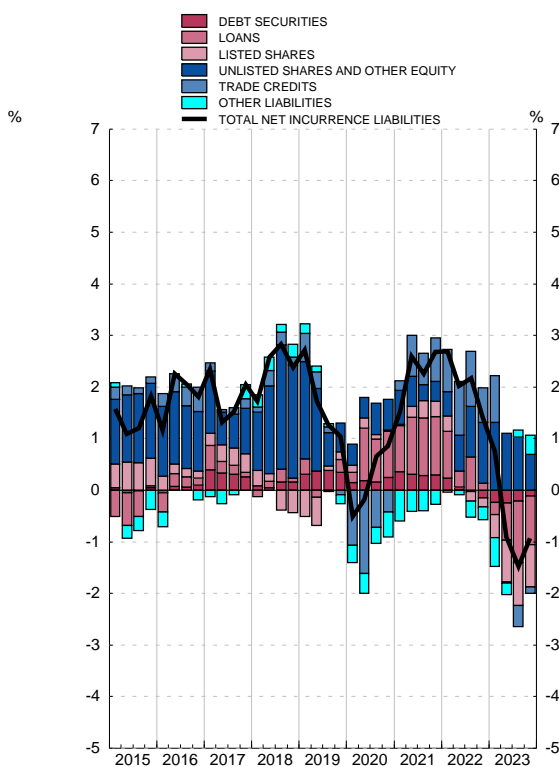
EUR millions

	Net financial transactions	Net acquisition of financial assets						Net incurrence of liabilities					
		Total	Main instruments					Total	Main instruments				
			Currency and deposits	Loans	Listed shares	Unlisted shares and other equity	Trade credits		Debt securities	Loans	Listed shares	Unlisted shares and other equity	Trade credits
1	2	3	4	5	6	7	8	9	10	11	12	13	
19	7 349	49 969	14 758	27 130	7 892	-1 834	-3 427	42 620	14 467	10 227	5 714	23 040	-3 459
20	-6 035	31 142	36 133	2 734	-7 891	2 289	-17 138	37 176	11 006	38 610	1 293	26 035	-18 565
21	12 710	131 780	30 237	46 631	7 328	-13 635	41 427	119 070	13 170	49 906	13 639	16 646	37 734
22	31 781	95 471	-4 633	3 675	-452	45 692	31 757	63 690	-6 851	5 997	-7 441	53 241	30 156
23	26 937	-16 234	5 684	-21 621	-3 054	-4 303	-8 964	-43 171	-5 436	-43 488	-37 665	32 176	-6 010
20 Q1	-12 628	-39 464	3 291	-2 579	-598	7 335	-33 859	-26 836	-580	9 928	11	5 053	-31 188
Q2	-640	13 599	34 183	-2 617	-3 143	1 617	-22 308	14 238	5 159	28 880	804	8 204	-24 944
Q3	-1 507	35 001	675	8 114	-983	4 589	25 068	36 507	3 323	505	1 094	7 726	28 452
Q4	8 739	22 005	-2 017	-184	-3 167	-11 253	13 961	13 266	3 104	-704	-617	5 052	9 116
21 Q1	-1 701	-1 212	-4 552	5 368	3 557	4 066	-3 134	489	3 699	8 700	73	6 681	-4 842
Q2	5 350	65 498	11 295	29 534	3 163	6 380	4 027	60 148	3 048	38 466	8 666	5 169	1 256
Q3	4 734	27 608	2 374	16 084	4 124	-15 822	21 032	22 874	2 187	1 465	6 225	-3 619	20 380
Q4	4 326	39 887	21 120	-4 355	-3 516	-8 258	19 502	35 560	4 237	1 275	-1 324	8 415	20 939
22 Q1	-8 305	-6 057	-9 319	2 571	-2 398	16 084	-7 215	2 249	1 073	-473	-69	11 084	-6 190
Q2	10 385	42 023	2 057	5 968	-3 007	13 497	15 441	31 638	-4 756	11 737	-4 896	15 838	12 427
Q3	6 279	35 194	3 293	7 920	-1 283	10 352	18 344	28 916	-1 895	16 609	-2 092	9 392	21 063
Q4	23 423	24 310	-664	-12 784	6 235	5 759	5 188	887	-1 274	-21 876	-384	16 926	2 856
23 Q1	6 861	-20 842	-16 639	-5 193	1 134	313	2 697	-27 703	-2 570	-17 182	-12 274	16 482	4 420
Q2	4 612	-38 604	4 942	-7 456	529	-10 623	-33 218	-43 216	-5 380	-9 914	-22 065	7 219	-29 274
Q3	7 224	10 372	6 378	620	-3 664	6 921	5 016	3 148	-129	-4 829	-3 223	6 137	3 664
Q4	8 240	32 839	11 004	-9 592	-1 053	-914	16 541	24 599	2 642	-11 562	-102	2 338	15 180

NET ACQUISITION OF FINANCIAL ASSETS
Annual percentage change and its components (a)



NET INCURRENCE OF LIABILITIES
Annual percentage change and its components (b)



Source: FASE (BE).

a. The annual percentage changes are calculated as: Total of Net acquisition of financial assets / Stock of financial assets at the beginning of the period.

b. The annual percentage changes are calculated as: Total of Net incurrence of liabilities / Stock of liabilities at the beginning of the period.