

TARGET2 - BANCO DE ESPAÑA

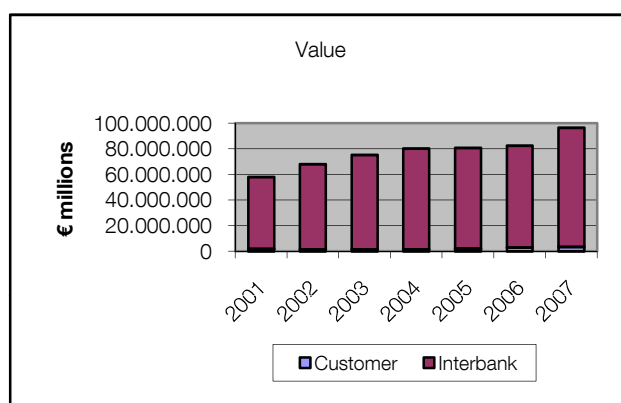
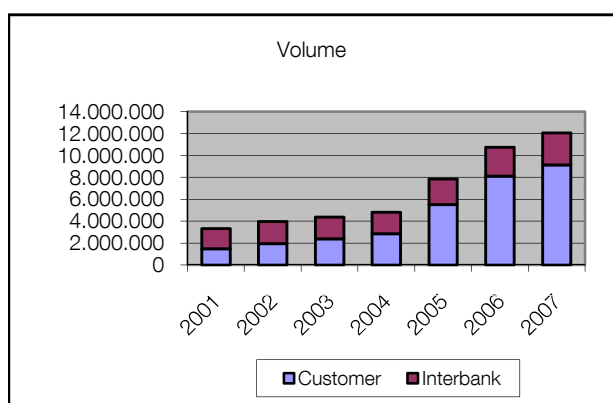
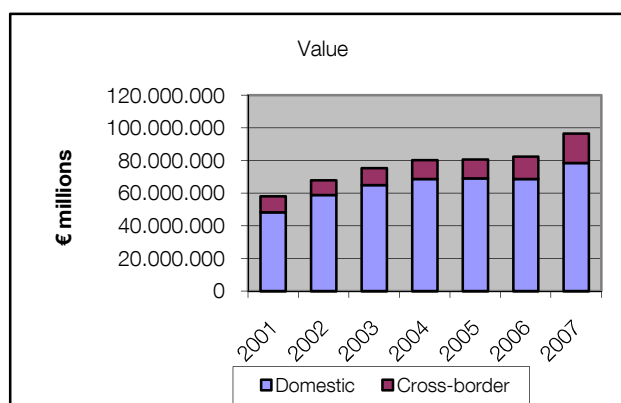
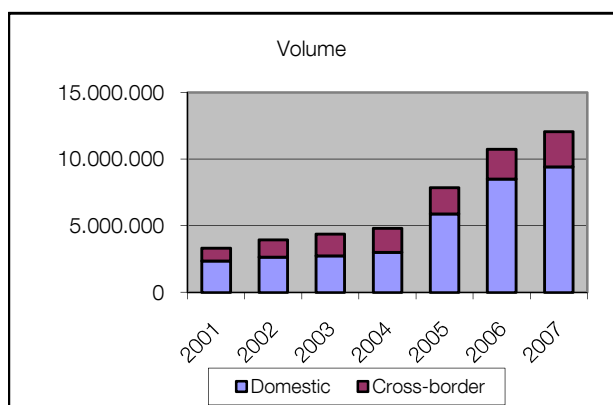
Volume and value of transactions (*)

	Volume		Value	
	Transactions	Increase %	Value (**)	Increase %
2001	3.318.259		58.170.897	
2002	3.957.131	19,25%	67.983.457	16,87%
2003	4.375.750	10,58%	75.331.518	10,81%
2004	4.818.353	10,11%	80.331.911	6,64%
2005	7.862.259	63,17%	80.683.343	0,44%
2006	10.747.625	36,70%	82.485.736	2,23%
2007	12.069.759	12,30%	96.633.195	17,15%
2008				
Jan	1.083.251		8.806.473	
Feb(***)	1.015.026	-6,30%	7.029.075	-20,18%
Mar	974.800	-3,96%	7.146.097	1,66%
April	1.092.128	12,04%	8.074.340	12,99%
May	947.705	-13,22%	7.729.663	-4,27%
June	876.773	-7,48%	7.410.466	-4,13%
July	976.312	11,35%	7.975.848	7,63%
August	679.990	-30,35%	6.344.534	-20,45%
Sept	836.659	23,04%	6.947.134	9,50%
Oct	944.674	12,91%	8.425.957	21,29%
Nov	774.035	-18,06%	8.206.001	-2,61%
Dec	889.214	14,88%	8.918.763	8,69%

(*) The table contains national and cross-border transactions, both sent and received.

(**) EUR millions

(***) TARGET2-BE was launched on 18 February 2008.

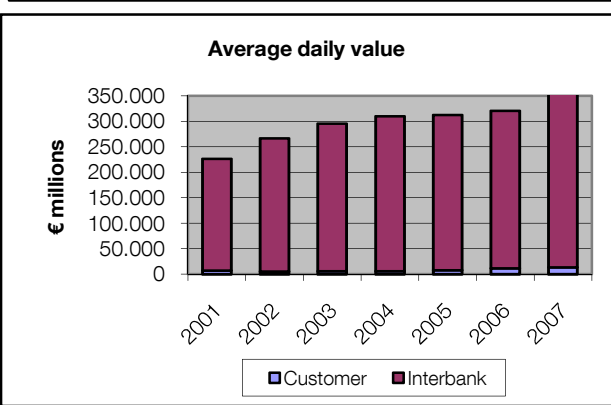
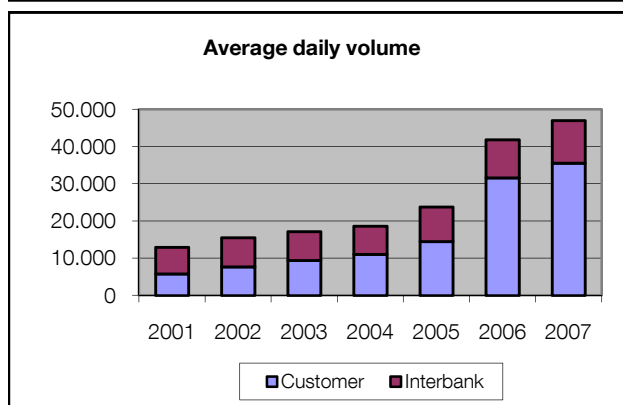
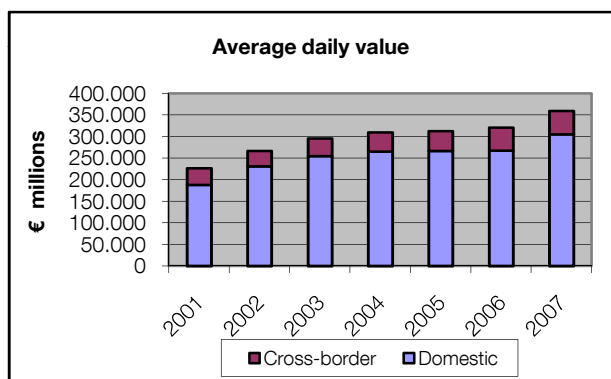
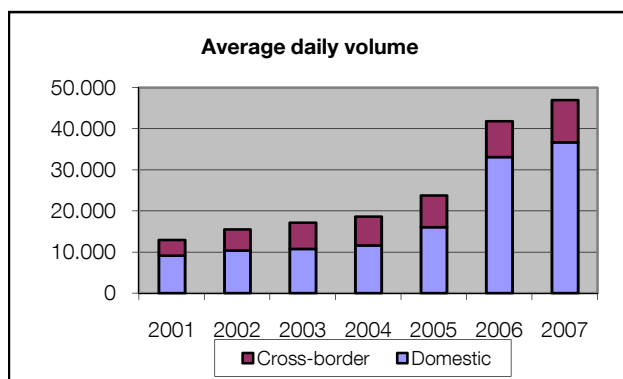


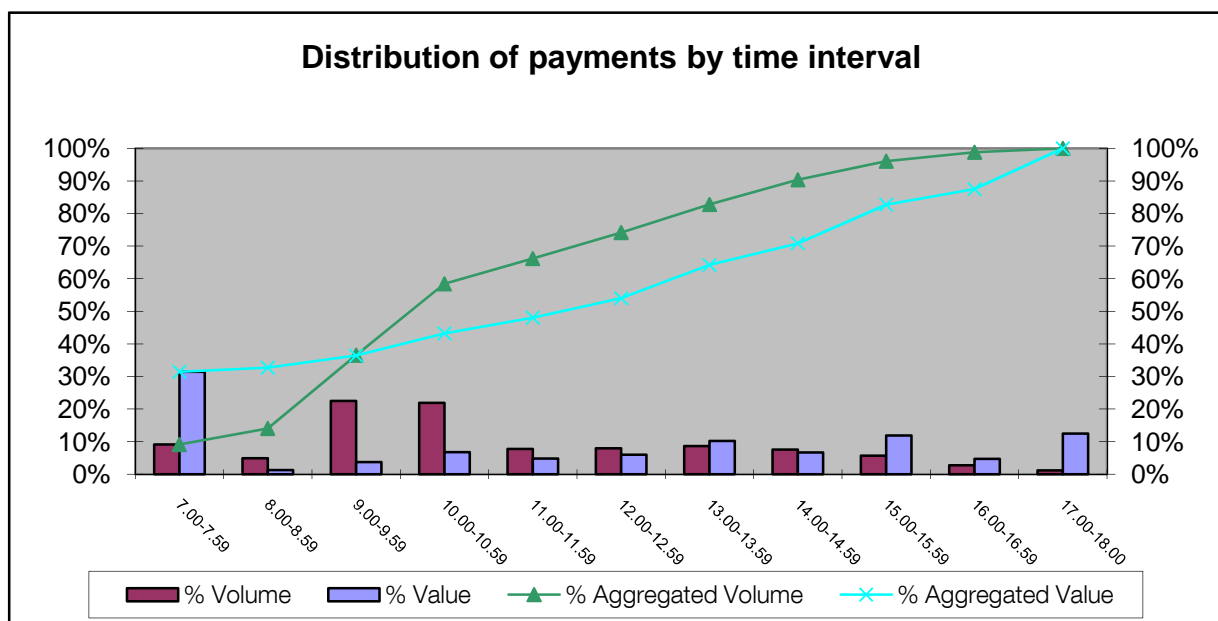
Average value per transaction (*)

Total	8,01
<i>Domestic</i>	8,33
<i>Cross-border</i>	6,85
<i>Customer</i>	0,38
<i>Interbank</i>	31,68

Data for 2007.

(*) EUR millions





Data for 2007

Number of participants

	Total	Direct (*)	Indirect
2001	246	207	39
2002	239	198	41
2003	225	189	36
2004	220	184	36
2005	214	180	34
2006	226	185	41
2007	219	178	41

(*) Banco de España is included as direct participant.

Concentration ratio (*)

Volume	42,22
Value	52,87

Data for 2007.

(*) Market share of the five largest participants in each system