

3. FINANCIAL ACCOUNTS AND SUPPLEMENTARY INDICATORS
C) Liquidity and financing indicators

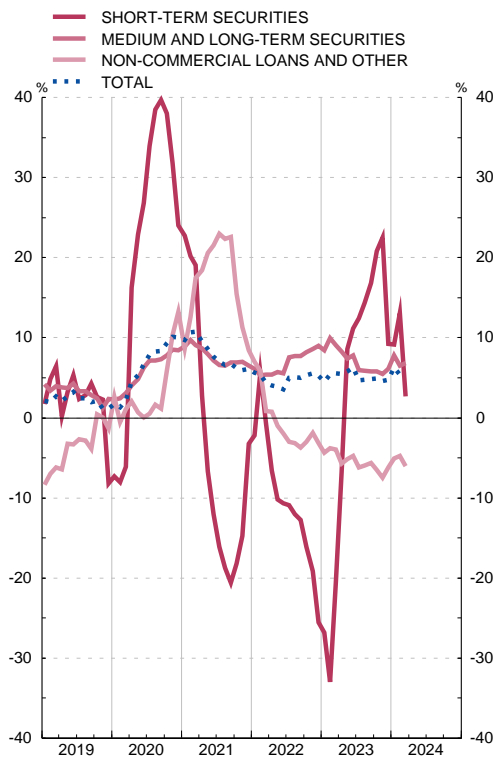
3.22 Gross financing indicators of Spain's general government

■ Series depicted in chart.

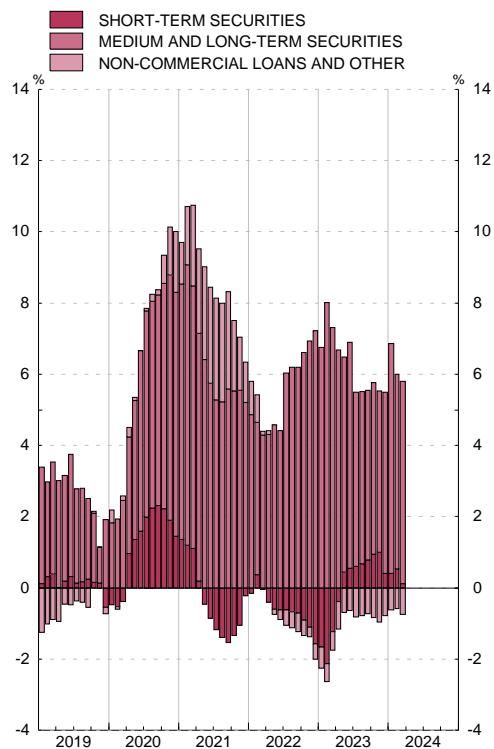
EUR millions and %

	Gross financing			Short-term securities				Medium and long term securities				Non Commercial Loans and Others			
	EDP Debt (a)	Monthly change	12 month % change	Total	Monthly change	12 month % change	Contribution to 12-month % change	Total	Monthly change	12 month % change	Contribution to 12-month % change	Total	Monthly change	12 month % change	Contribution to 12-month % change
	1=4+8+12	2=5+9+13	3	4	5	6	7	8	9	10	11	12	13	14	15
19	1 223 355	14 495	1.2	73 361	-6 572	-8.2	-0.5	992 140	23 178	2.4	1.9	157 854	-2 112	-1.3	-0.2
20	1 345 786	122 430	10.0	91 005	17 644	24.1	1.4	1 076 071	83 931	8.5	6.9	178 710	20 856	13.2	1.7
21	1 428 133	82 347	6.1	88 088	-2 917	-3.2	-0.2	1 146 233	70 162	6.5	5.2	193 812	15 102	8.5	1.1
22	P 1 502 799	74 666	5.2	65 599	-22 488	-25.5	-1.6	1 249 468	103 234	9.0	7.2	187 732	-6 080	-3.1	-0.4
22 Oct	P 1 498 007	-6 706	5.3	67 901	-1 854	-16.1	-0.9	1 237 497	-4 715	8.2	6.6	192 609	-136	-3.0	-0.4
22 Nov	P 1 506 724	8 718	5.6	66 580	-1 321	-19.1	-1.1	1 246 805	9 308	8.6	6.9	193 339	731	-1.9	-0.3
22 Dec	P 1 502 799	-3 925	5.2	65 599	-981	-25.5	-1.6	1 249 468	2 662	9.0	7.2	187 732	-5 607	-3.1	-0.4
23 Jan	P 1 490 102	-12 697	4.5	64 631	-968	-26.8	-1.7	1 241 135	-8 333	8.4	6.7	184 336	-3 396	-4.4	-0.6
23 Feb	P 1 520 246	30 143	5.4	62 258	-2 373	-33.0	-2.1	1 273 913	32 778	10.0	8.0	184 075	-261	-3.8	-0.5
23 Mar	P 1 535 380	15 134	5.5	68 916	6 659	-20.6	-1.2	1 279 894	5 981	9.1	7.3	186 570	2 495	-4.0	-0.5
23 Apr	P 1 526 022	-9 358	5.5	75 411	6 495	-6.8	-0.4	1 265 415	-14 479	8.3	6.7	185 196	-1 374	-5.7	-0.8
23 May	P 1 541 627	15 605	5.8	81 608	6 198	8.6	0.4	1 273 306	7 892	7.4	6.0	186 712	1 516	-5.1	-0.7
23 Jun	P 1 568 617	26 989	6.3	81 416	-192	11.1	0.6	1 299 216	25 909	7.8	6.3	187 985	1 272	-4.7	-0.6
23 Jul	P 1 557 401	-11 215	4.7	81 237	-179	12.4	0.6	1 292 171	-7 044	6.0	4.9	183 993	-3 992	-6.2	-0.8
23 Aug	P 1 563 279	5 878	4.7	80 870	-368	14.4	0.7	1 299 271	7 099	5.9	4.8	183 139	-854	-6.0	-0.8
23 Sep	P 1 577 266	13 986	4.8	81 472	602	16.8	0.8	1 313 907	14 636	5.8	4.8	181 887	-1 252	-5.6	-0.7
23 Oct	A 1 571 731	-5 535	4.9	82 024	552	20.8	0.9	1 309 648	-4 258	5.8	4.8	180 058	-1 829	-6.5	-0.8
23 Nov	A 1 575 475	3 745	4.6	81 585	-439	22.5	1.0	1 315 008	5 360	5.5	4.5	178 882	-1 176	-7.5	-1.0
23 Dec	A 1 573 754	-1 722	4.7	71 665	-9 920	9.2	0.4	1 326 054	11 046	6.1	5.1	176 034	-2 848	-6.2	-0.8
24 Jan	A 1 583 113	9 359	6.2	70 554	-1 111	9.2	0.4	1 337 555	11 501	7.8	6.5	175 004	-1 030	-5.1	-0.6
24 Feb	A 1 602 662	19 549	5.4	70 400	-153	13.1	0.5	1 356 988	19 433	6.5	5.5	175 273	270	-4.8	-0.6
24 Mar	A 1 613 063	10 402	5.1	70 789	388	2.7	0.1	1 367 029	10 041	6.8	5.7	175 246	-27	-6.1	-0.7

GROSS FINANCING OF GENERAL GOVERNMENT
Annual percentage changes



GROSS FINANCING OF GENERAL GOVERNMENT
Contributions to the annual percentage change



FUENTE: BE.

a. Debt according to Excessive Deficit Procedure (EDP). Consolidated nominal gross debt.